



## Specifications

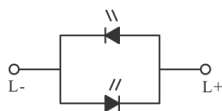
Current Rating	: 50mA
Voltage Rating	: 12V DC
Dielectric Withstanding Voltage	: 250V AC for 1 minute
Contact Resistance	: 100mΩ Max.(initial)
Insulation Resistance	: 100MΩ Min.
Operating Force	: 200gf ± 50gf
Total Travel	: 0.3mm ± 0.1mm
Operating Life	: 1,000,000 cycles Min.
Solder Specifications	: 260° for 3 seconds
Function	: Momentary(SPST)
Operating Temperature	: -10°C to +60°C

## Materials

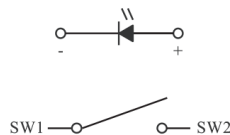
Cap	: Polycarbonate (PC)
Base	: Polyamide (PA)
Reflector	: Polyamide (PA)
Switch Terminal	: Brass with gold plating
Action Dome	: Stainless steel with silver plating
Sealing rubber	: Silicone

## PCB layout & Circuit Diagram

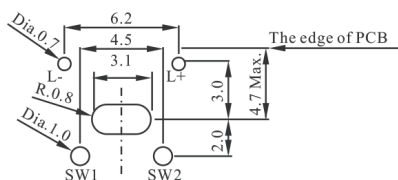
### Circuit Diagram



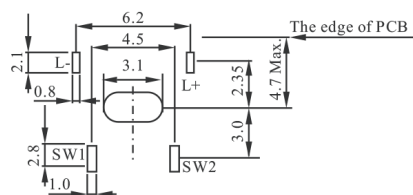
SPJ tact switch  
Dual Colors LED only



### Through hole type - SPJ-P

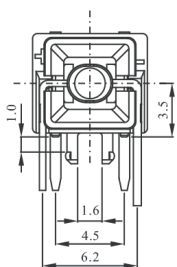


### SMD type - SPJ-S

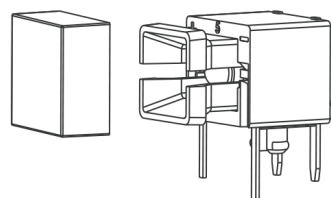
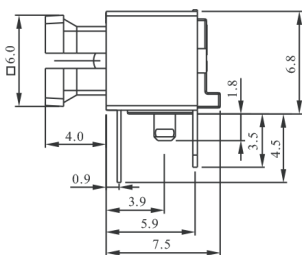


## Pole Options

### Dimension-Through hole type

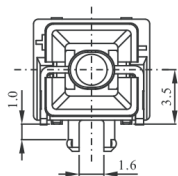


Dimensions : Millimeters

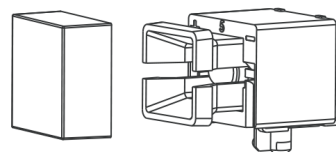
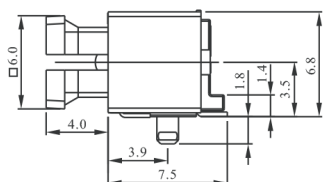


Note:  
\*Fit cap AFTER soldering process.

### Dimension - SMD type



Dimensions : Millimeters



Note:  
\*Fit cap AFTER soldering process.

## Part Number Table

Description	Colour (LED)	Part Number
Switch, Tact Illum, R/A	Red	MCSPJP1-YCA043T
	Yellow	MCSPJP2-YCA043T
	Green	MCSPJP3-YCA043T
	White	MCSPJP4-YCA043T
	Blue	MCSPJP7-YCA043T
Switch, Tact Illum, R/A, SMT	Red	MCSPJS1-YCA043T
	Yellow	MCSPJS2-YCA043T
	Green	MCSPJS3-YCA043T
	White	MCSPJS4-YCA043T
	Blue	MCSPJS7-YCA043T

**Important Notice :** This data sheet and its contents (the "Information") belong to the members of the AVNET group of companies (the "Group") or are licensed to it. No licence is granted for the use of it other than for information purposes in connection with the products to which it relates. No licence of any intellectual property rights is granted. The Information is subject to change without notice and replaces all data sheets previously supplied. The Information supplied is believed to be accurate but the Group assumes no responsibility for its accuracy or completeness, any error in or omission from it or for any use made of it. Users of this data sheet should check for themselves the Information and the suitability of the products for their purpose and not make any assumptions based on information included or omitted. Liability for loss or damage resulting from any reliance on the Information or use of it (including liability resulting from negligence or where the Group was aware of the possibility of such loss or damage arising) is excluded. This will not operate to limit or restrict the Group's liability for death or personal injury resulting from its negligence. Multicomp Pro is the registered trademark of Premier Farnell Limited 2019.