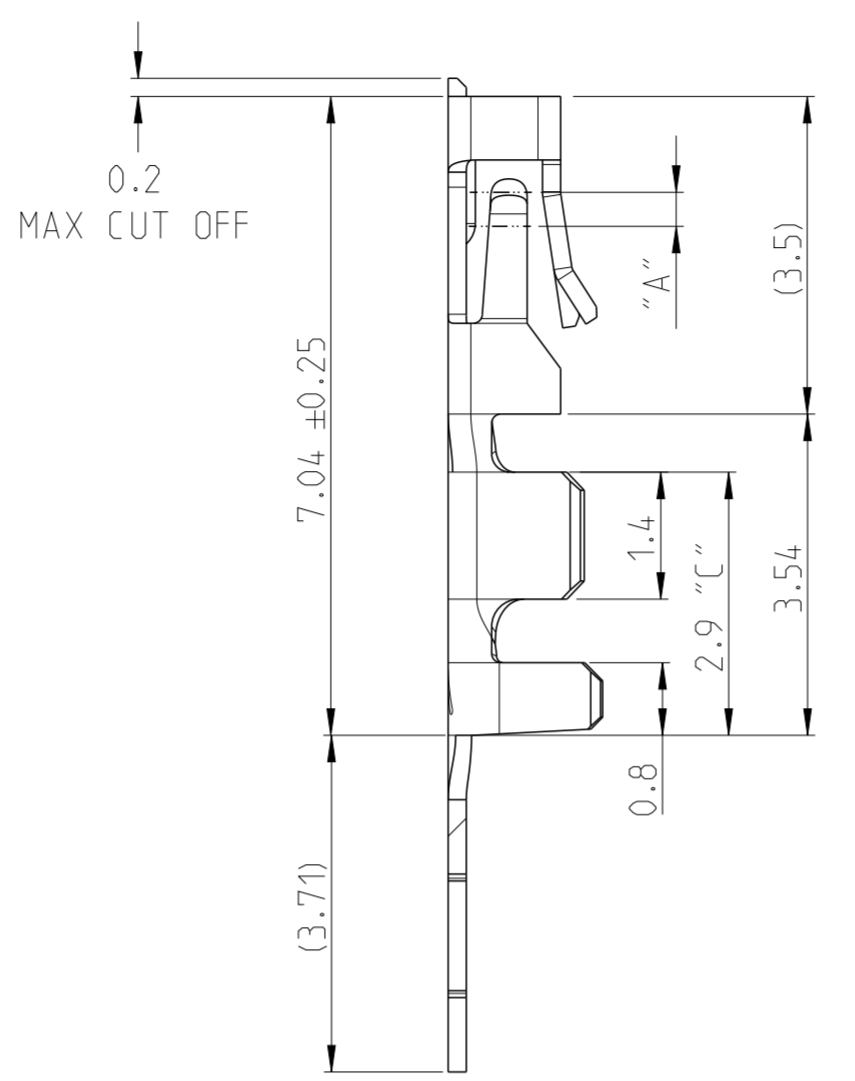
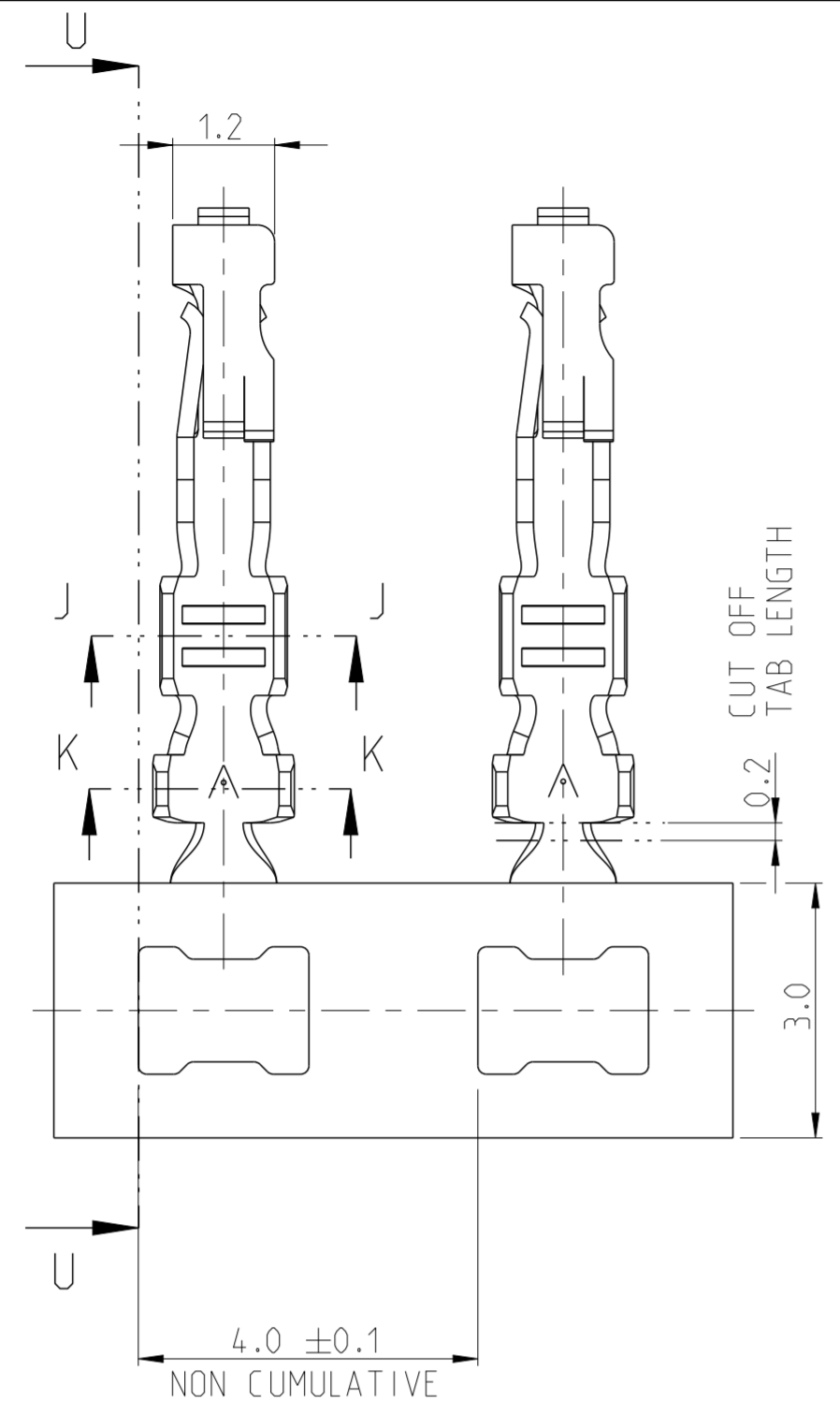
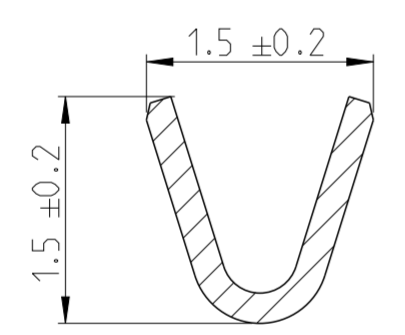


THIS DRAWING IS UNPUBLISHED. RELEASED FOR PUBLICATION
 © COPYRIGHT 2017 TE Connectivity ALL RIGHTS RESERVED.

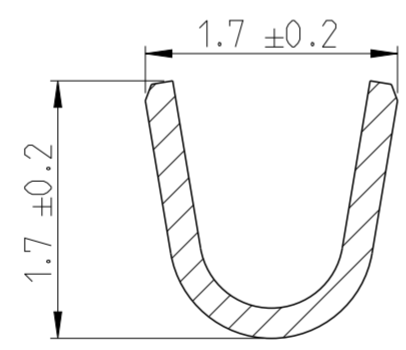
REVISIONS				
P	LTR	DESCRIPTION	DATE	APVD
	A	RELEASE TO PRODUCTION	18 JUN 2020	AY PS



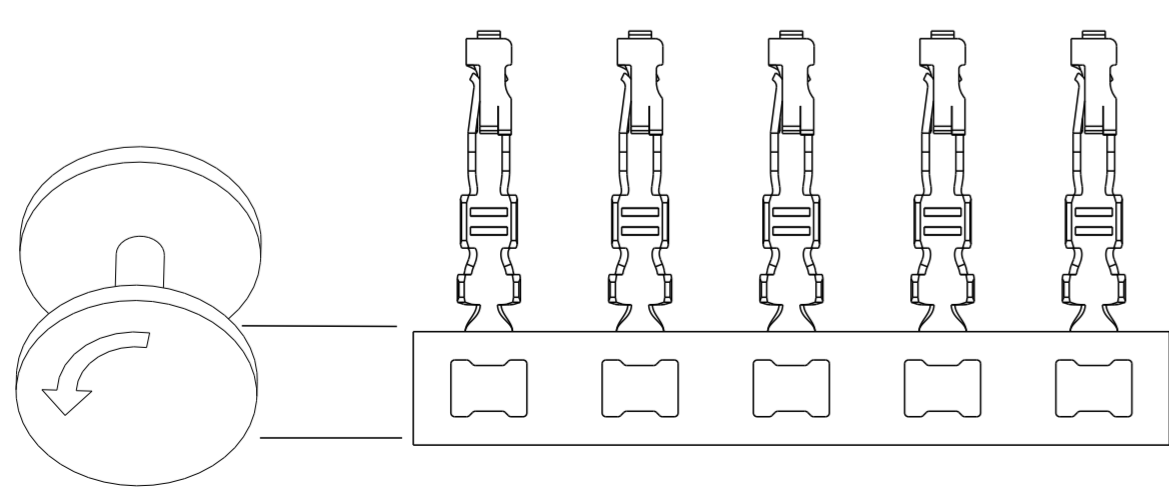
SECTION U-U



SECTION J-J
20:1



SECTION K-K
20:1



(CRIMP UP)

WIRE RANGE: 0.08-0.22 mm² (28-24 AWG)
 INSULATION RANGE: Ø1.0mm MAX

- NOTES:
- 1 MATERIAL: PHOSPHOR BRONZE, 0.2mm THICK
 - 2 FINISH: 1.27-2.54 µm TIN ALL OVER UNDERPLATE 1.27 µm MIN NICKEL ALL OVER
 - 3 CONTACT AREA "A": MIN 0.1 µm THK GOLD CRIMP AREA "C" : 1.27 - 2.54 µm THK TIN UNDERPLATE 1.27 µm MIN NICKEL ALL OVER
 - 4 CONTACT AREA "A" : MIN 0.38 µm THK GOLD CRIMP AREA "C" : 1.27 - 2.54 µm THK TIN UNDERPLATE 1.27 µm MIN NICKEL ALL OVER
 - 5 CONTACT AREA "A" : MIN 0.76 µm THK GOLD CRIMP AREA "C" : 1.27 - 2.54 µm THK TIN UNDERPLATE 1.27 µm MIN NICKEL ALL OVER
 - 6. APPLICABLE HOUSINGS :
 SINGLE ROW : 2316102
 DUAL ROW : 2316108, 2316109

5	-	5-2316113-6	LOOSE PIECE - HANDTOOL
5	30,000	5-2316113-5	FOR OCEAN APPLICATOR
4	-	4-2316113-5	LOOSE PIECE - HANDTOOL
4	30,000	4-2316113-4	FOR OCEAN APPLICATOR
3	-	3-2316113-4	LOOSE PIECE - HANDTOOL
3	30,000	3-2316113-3	FOR OCEAN APPLICATOR
2	-	2-2316113-3	LOOSE PIECE - HANDTOOL
2	30,000	2-2316113-2	FOR OCEAN APPLICATOR
FINISH	QTY PER REEL	PART NUMBER	TOOLING

THIS DRAWING IS A CONTROLLED DOCUMENT.

DIMENSIONS: mm	TOLERANCES UNLESS OTHERWISE SPECIFIED:	DWN SOURAV DAS 29 OCT 2017	 TE Connectivity
0 PLC ±	1 PLC ±0.15	CHK RAKSHITH NAYAK 29 OCT 2017	
2 PLC ±0.1	3 PLC ±	APVD PRASHANTH S 11 DEC 2017	
4 PLC ±	ANGLES ±2°	PRODUCT SPEC 108-64040-1	
MATERIAL SEE NOTE	FINISH	APPLICATION SPEC 114-32173	NAME AMPMODU 2mm RECEPTACLE, wTB CRIMP CONTACT, AWG 28-24
		WEIGHT -	SIZE A2
		CUSTOMER DRAWING	CAGE CODE 00779
			DRAWING NO C-2316113
			RESTRICTED TO -
			SCALE 12:1
			SHEET 1 OF 1
			REV A