

*JST*

Hand crimping tool  
Type: WC-740

Features

Parallel action  
operation

Ratchet release

Easy readjustment  
of load

Contact locator with  
insulation-stop

Precisely ground  
profiles

Ergonomic soft grips  
colour: green

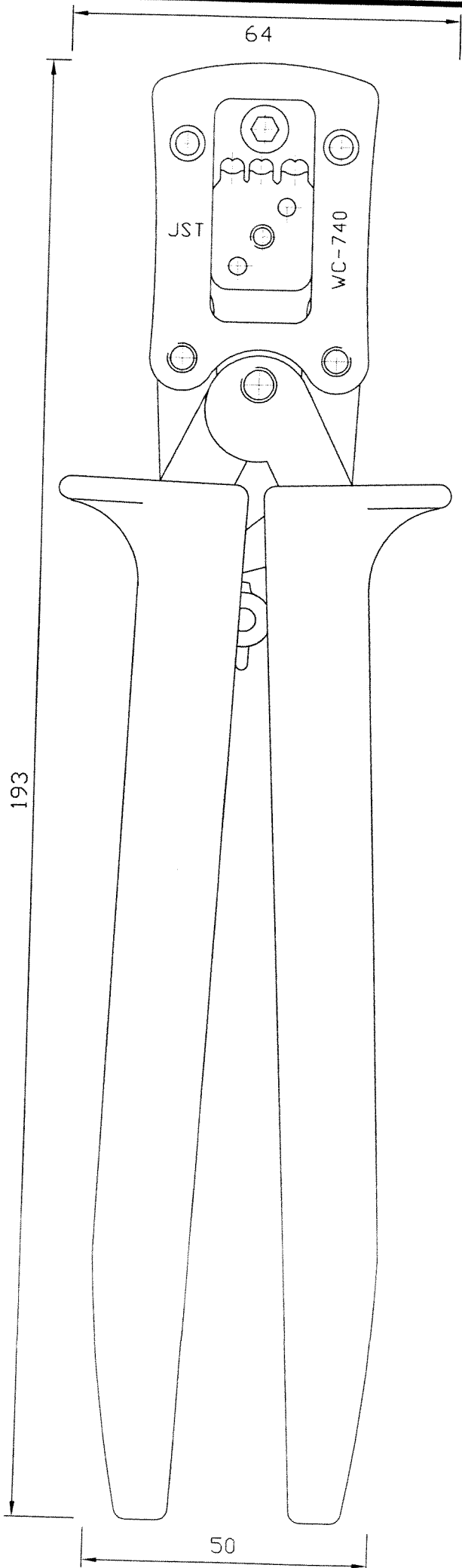
Fully recyclable

Applicable terminal:  
< >PS-01T-110

Cross section range:  
Profile 1: 24 AWG  
Profile 2: 22 AWG  
Profile 3: 20 AWG

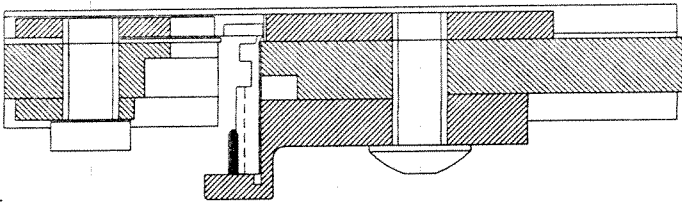
Crimp height specification  
24 AWG - 0.90mm  
22 AWG - 0.95mm  
20 AWG - 1.00mm

Operating instructions see overleaf



# OPERATION INSTRUCTIONS

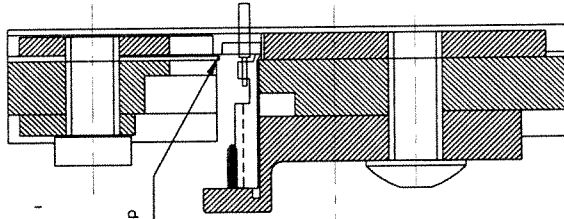
1.



1. Locate terminal up to stop.

Insulation stop

2.

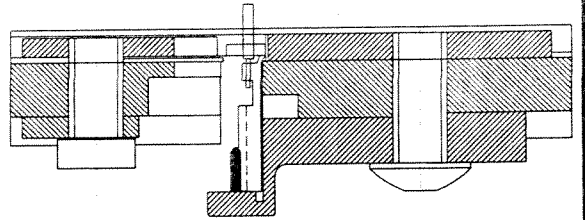


2. Close handtool until first ratchet.

3. Insert wire up to stop.

Terminal stop

3.



4. Close handtool until the ratchet releases.

5. Carefully remove the wire.