

Unit mounted residual current devices

Section three

RMG residual current devices	82
RMG auxiliaries	83
RMG accessories	84
RMG enclosures	85

**The devices featured in
Section three are not suitable
for mounting in the
Isobar 4 *Evo* outgoing
connection system**

RMG residual current devices

Ratings: 16 to 100A

Sensitivities: 10 to 300mA, time delayed



RMG 80 030 2

Specifications

- RCD: BS EN 61008

Technical data

- Positive contact indication in accordance with BS 7671

Unwanted tripping

All RMG rcd's incorporate a filtering device preventing the risks of unwanted tripping due to transient voltages (lightning, line disturbances on other equipment...) and transient currents (from high capacitive circuits.)

Electrical data

- **Current ratings:** 16A to 100A
- **Voltage ratings:** 2 pole: 110/240V AC, 4 pole: 240/415V AC
- **Cable capacities**
16A-80A: tunnel terminals for cables up to 35mm²
100A: clamp terminals for cables up to 50mm²
- **Number of operating cycles:** (on load) 20,000 cycles (O-C)
- **Operating temperature:** -5 to +40°C
- **Identification system:** All RMG RCDs can accept up to a total of 4 marking accessories on each of their poles. The following symbols are available: Blank, 1-9, +, -, and A-Z. See page 39
- **Width in 18mm SP ways:**
2P RMG all ratings: 2
4P RMG all ratings: 4

Installation

- On symmetrical DIN rail
- Panel mounting

Note: RMG residual current devices must be used with circuit breakers to provide circuit protection of overload and short circuit faults.

- **Dimensions:** see page 180

Application

Type RMG residual current devices provide the functions of isolation, switching and earth leakage protection of electrical circuits. They have a residual current operated electro-mechanical release which operates without any auxiliary source of supply to open a circuit automatically in the case of an earth leakage fault between phase and earth greater than or equal to a threshold of 10, 30, 100, or 300mA.

Type RMG RCD - two pole 240V Class AC

Rating (A)	Sensitivity (mA)	Part N°.
16	10	RMG 16 010 2
25	10	RMG 25 010 2
25	30	RMG 25 030 2
40	30	RMG 40 030 2
40	300	RMG 40 300 2
63	30	RMG 63 030 2
63	100	RMG 63 100 2
63	300	RMG 63 300 2
80	30	RMG 80 030 2
80	100	RMG 80 100 2
80	300	RMG 80 300 2
100	30	RMG 100 030 2
100	100	RMG 100 100 2
100	300	RMG 100 300 2
80	100	
time delayed	50-70ms	23111
100	300	
time delayed	50-70ms	23116
100	100	
time delayed	50-70ms	RMG 1001002S

Type RMG RCD - four pole 415V Class AC

Rating (A)	Sensitivity (mA)	Part N°.
25	30	RMG 25 030 4
25	300	RMG 25 300 4
40	30	RMG 40 030 4
40	300	RMG 40 300 4
63	30	RMG 63 030 4
63	100	RMG 63 100 4
63	300	RMG 63 300 4
63	300	
time delayed	50-70ms	23146
80	30	16261
100	300	23213
100	300	
time delayed	50-70ms	23227

Type RMG RCD Class A

Rating (A)	N°. of poles	Part N°.
25A 30mA	2	23249
40A 30mA	2	23253
63A 30mA	2	23258
40A 30mA	4	23303
63A 30mA	4	23308

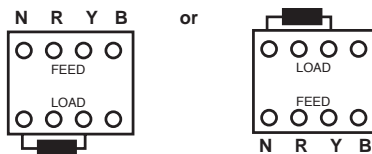
3 phase 3 wire 415V applications

In applications where no neutral is available an auxiliary test resistor is required for test button operation.

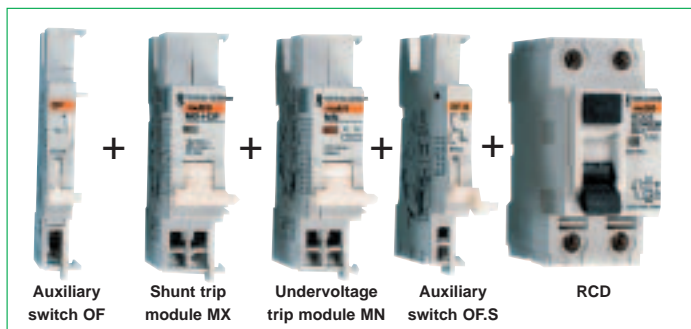
Note: Device operation is independent of voltage or type of connection.

30mA	2700Ω	4 watt
100mA	820Ω	4 watt
300 mA	270Ω	4 watt

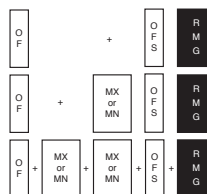
Note: Resistors are not available from Merlin Gerin.



Electrical auxiliaries for 2 and 4 pole RMGs



Arrangement of auxiliaries



Note: both 2P and 4P RMG type residual current devices can be fitted with the above combinations of electrical auxiliaries.

Note: OFS required for all combinations.



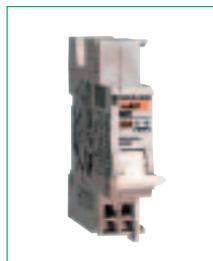
26946

Shunt trip release (MX)

- Enables remote tripping
- Is equipped with a cut-off switch in series with the coil allowing control circuit to remain energised
- Includes one auxiliary changeover switch (OF)
- Red flag trip indicator
- Mounted on the LHS of the OFS
- Cable capacity 2.5mm²

Width in 18mm SP ways	Coil volt	Consumption pickup W or VA	Part N°.
1	130dc	10	26946
1	240ac	50	26946
1	415ac	120	26946
1	48-60dc	22	26947
1	48-130ac	200	26947
1	24ac/dc	120	26948

Also requires OFS **26923**



26960

Undervoltage release (MN)

- Enables the RCD to be tripped either when the auxiliary supply voltage drops or by the opening operation of a normally closed remote pushbutton
- Prevents the RCD from being switched 'ON' again if the undervoltage release supply is not present
- Red flag trip indicator
- Mounted on the LHS of the OFS
- Cable capacity 2.5mm²

Width in 18mm SP ways	Coil volt	Consumption pickup W or VA	Part N°.
1	220/240AC	4.1	26960
1	48AC	4.3	26961
1	48DC	2	26962

Also requires OFS **26923**



26923

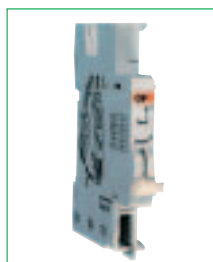
Auxiliary switch (OFS)

- A changeover switch which acts as an indicating or control device to monitor the ON or OFF positions of an RCD
- The OFS also acts as an adaptor mounted on the LHS of RCD, between the RCD and any other auxiliaries (additional OF, MX, MN, mounted on LHS of OFS). Indicates type of RCD
- Cable capacity 2.5mm²

Width in 18mm SP ways	Part N°.
0.5	26923

Contact ratings (A):

- 3A at 415V ac
- 1A at 125V dc
- 6A at 24V dc
- 6A at 240V ac
- 2A at 48V dc



26924

Auxiliary switch (OF)

- Changes main contacts to ON/OFF
- Test button on front face
- Cable capacity 2.5mm²

Width in 18mm SP ways	Part N°.
0.5	26924

Also requires OFS **26923**

Accessories

RMG type residual current devices

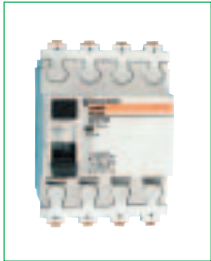


26978

Terminal shields

- Two-piece: completely covers terminals (cannot be fitted to 100A 2 pole unit)

Description	Part N°.
Two piece unit for use with 2P RMG RCDs (except 100A unit)	26976
Two piece unit for use with 4P RMG RCDs	26978



26981

Sealable terminal screw shield

- Enables total isolation of the terminal screws
- 2P and 4P RMG RCDs only

Description	Part N°.
For use with 2P and 4P RMG RCDs (2 strips of 4)	26981

Padlocking facility

Description	Part N°.
Padlocking bag of 2	26970
Padlock + 2 keys	MGPL
Spare key for MGPL	MGPLSK

- ▼ Metal
- ❖ All insulated



14599

▼ G9 enclosure IP30

For a more comprehensive range of enclosures please refer to Section seven.

- Made from folded steel, epoxy powder coated
- **Degree of protection:** IP30
- **It consists of:**
 - A back plate with DIN rail
 - A cover screwed to the back plate having 25mm knockouts top and bottom

Capacity in 18mm SP ways	Part N°.
3	99560
4	14599
5	14603

- **Dimensions:** see page 195
- For 2P RMG RCDs use **99560**
- For 4P RMG RCDs use **14599**.



13394

❖ Mini opale IP30

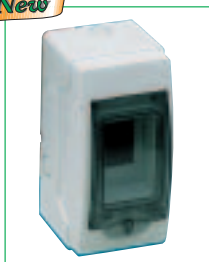
Impact resistant, all-insulated enclosure self extinguishing to 650°C.

- **Degree of protection:** IP30
- **It consists of:**
 - An insulated back plate with integral DIN-rail
 - A cover clipped to the back plate
 - Four-hole terminal bar (also available separately - (1 X 16mm² + 3 X 10mm²) Part N°. **14901**)

Capacity in 18mm SP ways	Part N°.
2	13392
4	13394
6	13396
8	13398

- **Dimensions:** see page 195
- For 2P RMG RCDs use **13392**
- For 4P RMG RCDs use **13394**

New



13441

❖ Kaedra weatherproof IP65

- **Degree of protection:** IP65
- **Protection against mechanical damage IK09**
- **Self extinguishing insulating material**
- **Flame and abnormal heat resistance 650°C, IEC 60695-2-1**
- **Class 2: total insulation**
- **They are supplied complete with:**
 - Built in dividable blanking plate
 - Screwed cover with hinged transparent window
 - 13441 - 13443 two terminal blocks 4 holes each
 - 13444 - two terminal blocks 8 holes each
- **Accessories:** see page 141

Capacity in 18mm SP ways	Part N°.
4	13441
6	13442
8	13443
12	13444
Lock & key	13948
Sealing kit	13947
Bag of membrane glands	14190

- **Dimensions:** see page 196
