

# SMA Coaxial Adapter

## Female/Female, 50Ω

**multicomp** PRO

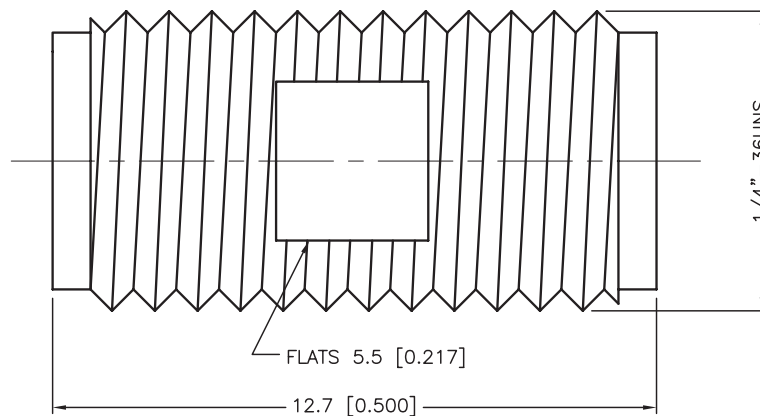
**RoHS  
Compliant**



### Specifications:

Connector Type : Adapter  
 Body Style : Straight Adapter  
 Connector : SMA Coaxial  
 Gender : Jack  
 Body : Brass Per JIS-C3604  
 Center Contact : Beryllium Copper per ASTM B196  
 UNS C17300  
 Insulation : PTFE Per ASTM D1457 and  
 ASTM D1710  
 Connector Interface per MIL-STD-348A  
 Part to clean and free of burrs

### Diagram



Dimensions : Millimeters (Inches)

### Part Number Table

Description	Material	Finish	Qty.	Part Number
Centre Contact	Beryllium Copper	Gold 50μ" Min.	1	SPC20111
Insulation	PTFE	None		
Body	Brass	Nickel 100μ" Min.		

**Important Notice :** This data sheet and its contents (the "Information") belong to the members of the AVNET group of companies (the "Group") or are licensed to it. No licence is granted for the use of it other than for information purposes in connection with the products to which it relates. No licence of any intellectual property rights is granted. The Information is subject to change without notice and replaces all data sheets previously supplied. The Information supplied is believed to be accurate but the Group assumes no responsibility for its accuracy or completeness, any error in or omission from it or for any use made of it. Users of this data sheet should check for themselves the Information and the suitability of the products for their purpose and not make any assumptions based on information included or omitted. Liability for loss or damage resulting from any reliance on the Information or use of it (including liability resulting from negligence or where the Group was aware of the possibility of such loss or damage arising) is excluded. This will not operate to limit or restrict the Group's liability for death or personal injury resulting from its negligence. Multicomp Pro is the registered trademark of Premier Farnell Limited 2019.

Newark.com/multicomp-pro  
 Farnell.com/multicomp-pro  
 Element14.com/multicomp-pro

**multicomp** PRO