



# ATP22 Series Anti-Vandal Sealed Pushbutton Switch

**NEW**

## Features/Benefits

- Momentary or Lock version
- IP67 sealed & IK10 (Stainless steel bushing)
- Capable of up to 3A resistive load
- 50,000 life cycle at full load
- Various colors of LED illuminate indicator
- Choices of pushbutton with symbol on spot, ring or power logo

## Typical Applications

- Control Panels including car park and traffic light
- Industrial Instruments
- Lifts / Escalator
- Communication equipment
- Alarm, safety and security systems



## Specifications

FUNCTION: Single pole and double poles  
 CONTACT ARRANGEMENT: N.O. and N.C.  
 MOUNTING TYPE: Threaded front panel mount  
 TORQUE FOR THREADED BODY: 5-14 Nm

## Mechanical

OPERATING LIFE: Momentary 1,000,000 cycles  
 Self-lock 500,000 cycles  
 TOTAL TRAVEL: about 3.2 mm  
 OPERATING FORCE: 1 pole 2.5 ± 1N  
 2 pole 3.5 ± 1N

## Electrical

CONTACT RATING: 1th 5A/250VAC  
 3A / 250VAC  
 3A / 28VDC  
 OPERATING LIFE: 50,000 make-and-break cycles at full load  
 DIELECTRIC STRENGTH: 2,000 V RMS @ sea level  
 INSULATION RESISTANCE: 1,000 MΩ min. @ 500 VDC  
 INITIAL CONTACT RESISTANCE : 50 mΩ max @1A 12VDC

## Materials

BUSHING: Stainless steel / Aluminum alloy  
 BASE: PBT (UL 94-A0), PC (UL 94-V2)  
 ACTUATOR: PC; Stainless steel / Aluminum alloy  
 INTERNAL ASSEMBLY: POM / PA66  
 SPRING: Steel  
 SEALING / O-ring: Silicone  
 TERMINALS: Brass with silver or gold plated  
 CONTACT: Copper, silver plated

## Operating Environment

OPERATING TEMPERATURE: -20°C to +55°C  
 SEALING / PROTECTION: IP67 / IK10 (Stainless steel bushing)

**NOTE:** Specifications and materials listed above are for switches with standard options. For information on specific and custom switches, please contact Customer Service.

## Build-A-Switch

To order, simply select desired option from each category and place in the appropriate box.



Designation ATP22 Series

Actuator Style S Standard

Actuator Indicator  
L0 Without LED  
L3 Moving ring  
L6 Ring LED\*  
L7 Ring LED + power logo\*\*  
L8 Ring LED + power logo\*\*\*

### Illumination

Color	Dual color
<u>0</u> Without LED	<u>A</u> Red & Green
<u>2</u> White	<u>B</u> Red & Blue
<u>3</u> Red	<u>D</u> Blue & Yellow
<u>5</u> Yellow	<u>G</u> Red & Yellow
<u>6</u> Green	<u>H</u> Green & Yellow
<u>7</u> Blue	<u>J</u> Orange & Green

### LED voltage (20mA)

00 Without LED  
03 3V  
06 6V  
12 12V  
24 24V  
36 36V  
A1 110V AC  
A2 220V AC

Terminal plating  
Q Silver  
G Gold

### Termination

03 STD solder lug  
W1 Wire lead 500mm\*\*\*\*  
W2 Wire lead 1,000mm\*\*\*\*

### Mechanical function

A Momentary  
E Lock

### Contact arrangement

S SPDT  
D DPDT

### Bushing type

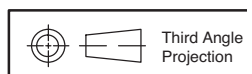
B0 Stainless (Round)  
B3 Al alloy: black anodized (Round)  
M0 Stainless (Double D-shape)

\* Available on ring color CAP of red/green/blue only.

\*\* Power logo and ring with clear color CAP available on double D-shape bushing only.

\*\*\* Power logo and ring with red/green/blue color CAP available on double D-shape bushing only.

\*\*\*\* Available upon request, please contact your sales representative for details.



Dimensions are shown: mm (inches)  
 Specifications and dimensions subject to change



**NEW**

# ATP22 Series Anti-Vandal Sealed Pushbutton Switch

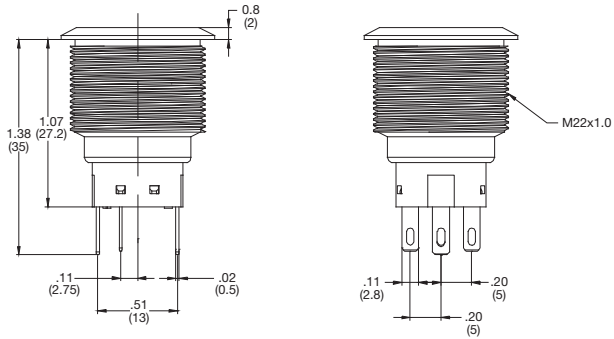


**A**

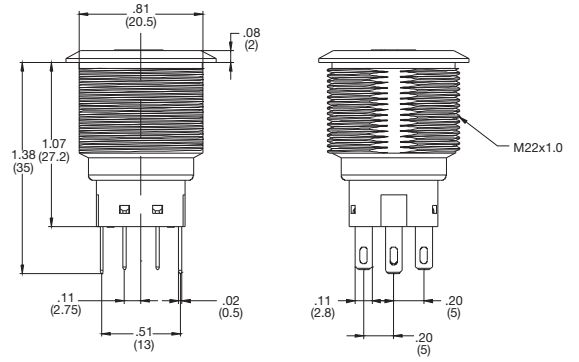
**Pushbutton**

## STANDARD VIEW

**ROUND BUSHING**

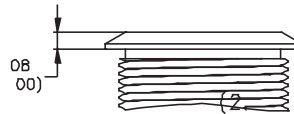


**DOUBLE-D BUSHING**



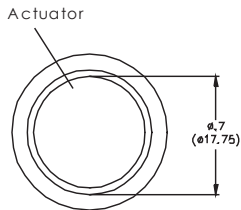
## ACTUATOR STYLE

**S STANDARD**

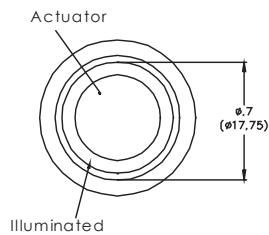


## ACTUATOR INDICATOR

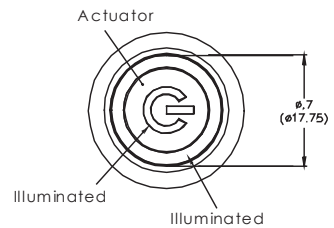
**L0 WITHOUT LED**



**L3 & L6 RING LED**



**L7 & L8 POWER & RING**





# ATP22 Series Anti-Vandal Sealed Pushbutton Switch

**NEW**

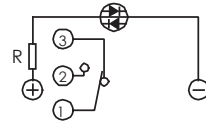
Pushbutton  
A

## CIRCUIT

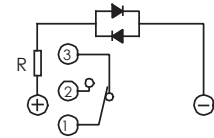
SPDT



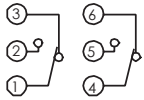
SPDT - SINGLE COLOR LED



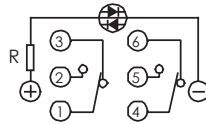
SPDT - DUAL COLOR LED



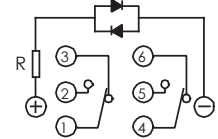
DPDT



DPDT - SINGLE COLOR LED

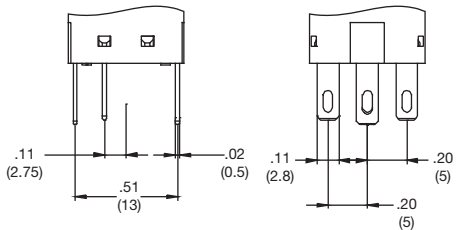


DPDT - DUAL COLOR LED

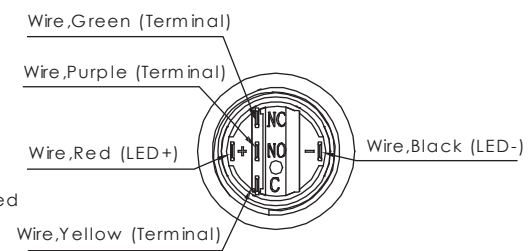
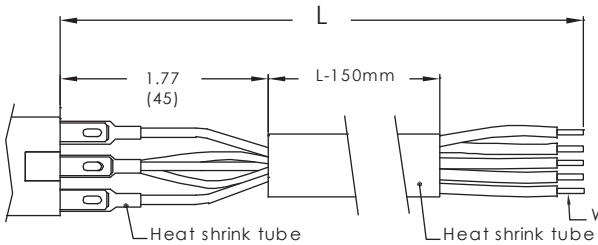


## TERMINATION

**03 SOLDERLUG**

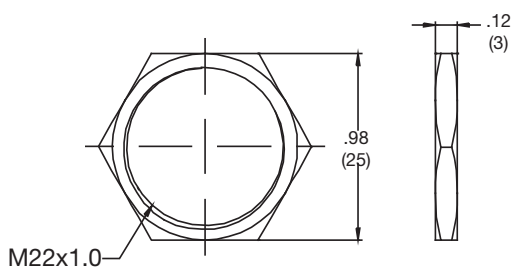


**W1 OR W2 WIRE LEAD**

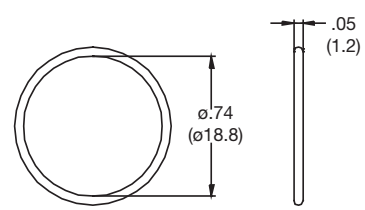


## HARDWARE

HEX NUT



O - RING



11 Apr 19

Dimensions are shown: mm (inches)  
Specifications and dimensions subject to change