

Q25 Series

Ø25mm panel mount LED indicators



DISTINCTIVE FEATURES

- 18.2mm colored Fresnel lens
- 200 mm long wire terminations
- Rear epoxy sealed



ENVIRONMENTAL SPECIFICATIONS

- Above panel sealing tested to IP67 & IP69K
- Operating & Storage Temperature Range:
Operating temperature: -40 °C to +85 °C (-40 °F to +185 °F)
Storage temperature: -40 °C to +100 °C (-40 °F to +212 °F)



GENERAL SPECIFICATIONS

- Operating voltage: 12 to 24 Vac/dc
- Current consumption: 30mA (nominal across operating voltage range)
- Reverse voltage protection: the indicator has no polarity
- Over-voltage protection: activates at 36 V
- Viewing Angle: 60°
- Life Expectancy: 100,000 hours
- Maximum panel thickness: 9mm



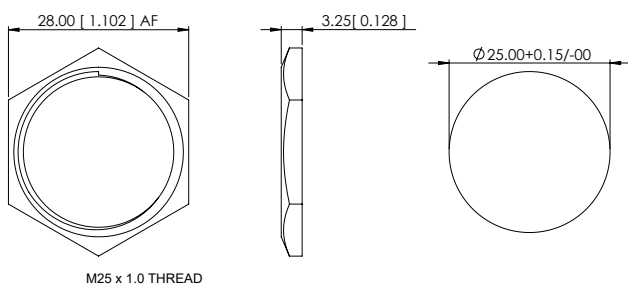
MATERIALS

- Stainless steel 316L body, PC lens, Nitrile o-ring



MOUNTING

- Mounting torque: 75 cNm/0.75 Nm



Q25 series

Ø25 mm panel mount LED indicators



ELECTRICAL SPECIFICATIONS

STANDARD LED INTENSITY

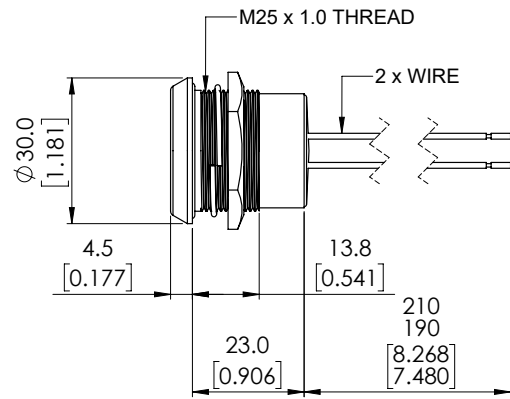
LED COMPONENT SPECIFICATIONS		
	Typical intensity (mcd)	Forward Voltage (Vac/dc)
Red	5400 mcd	7.5
Green	6900 mcd	7.5
Yellow	5100 mcd	7.5
Blue	2000 mcd	7.5
White	6900 mcd	7.5

ADDITIONAL INFORMATION ON LED COMPONENTS

- The operating voltage must not be exceeded by more than 20% as this will result in reduced life expectancy.
- Luminous intensity is measured at 30 mA unless otherwise stated.



CONNECTIONS

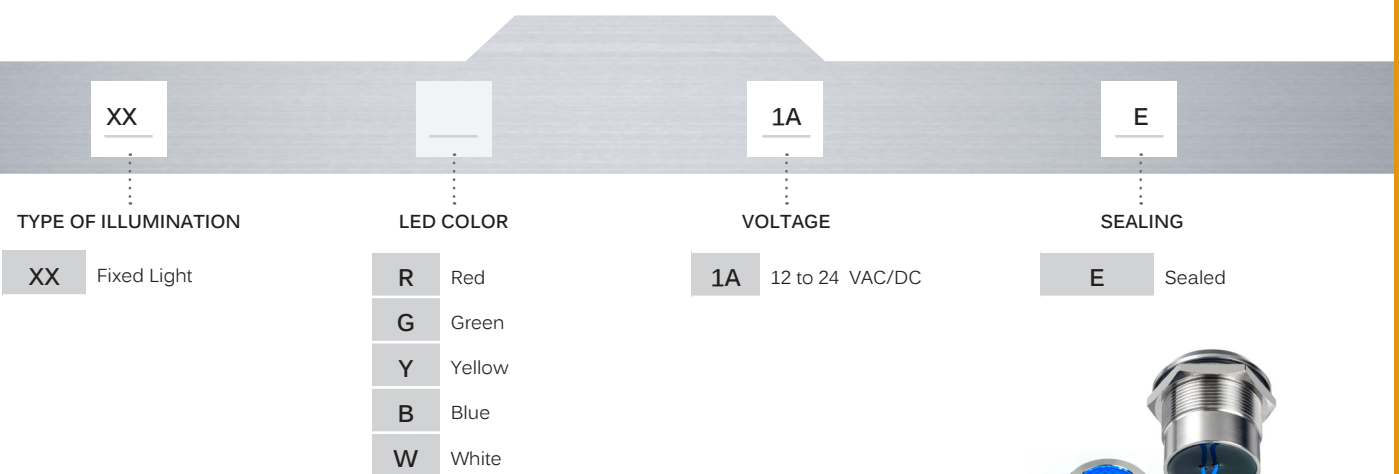
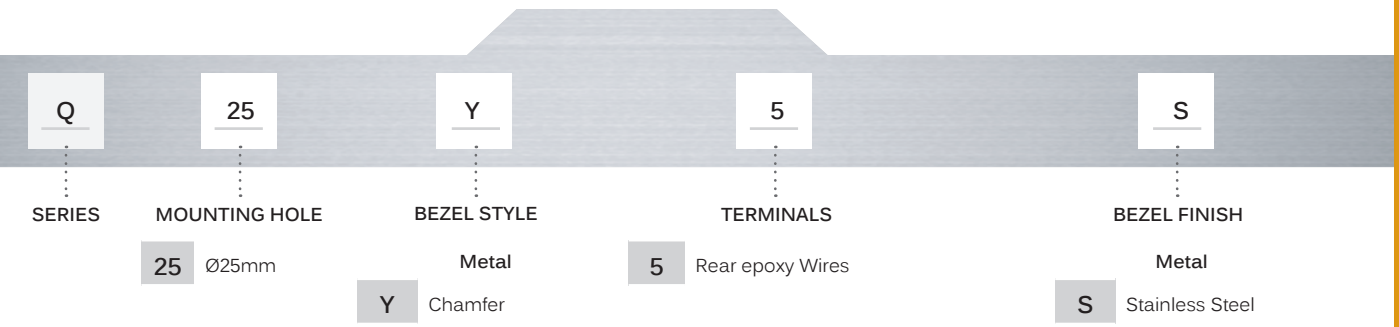


Q25 series

Ø25 mm panel mount LED indicators



BUILD YOUR PART NUMBER



ABOUT THIS SERIES

• Standard wire length is 200 mm, 20 AWG UL1007, for other wire lengths consult APEM.