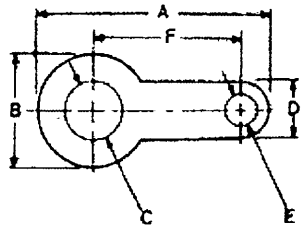


# Single Ended Flat Tags

[[Back to Single Ended Flat Tags Index](#)]



Part No	A		B		C		D		E		F		G		Material	Gauge	
		Tol±		Tol±		Tol±		Tol±		Tol±		Tol±		Tol±			
G370	in	.529	.005	.312	.005	.192(2BA)	-.003	.189	.003	.092	.001	.281	.002	---	---	BRASS	.018
T524	mm	13.44	.13	7.92	.13	4.88(M4.5)	-.08	4.80	.08	2.34	.03	7.14	.05	---	---	BRASS	.457
G370	in	.529	.005	.312	.005	.148(4BA)	.003	.189	.003	.092	.001	.281	.002	---	---	BRASS	.018
T525	mm	13.44	.13	7.92	.13	3.78(M3.5)	-.07	4.80	.08	2.34	.03	7.14	.05	---	---	BRASS	.457
S622	in	---	---	.295	.005	.195	.003	.094	.015	.047	.015	.250	.005	---	---	BRASS	.018
	mm	---	---	7.49	.13	4.95	.08	2.39	.38	1.19	.38	6.35	.13	---	---	BRASS	.457
G410	in	.500	.015	.250	.015	.148(4BA)	-.003	.125	.015	.062	.001	.312	.002	---	---	BRASS	.018
T558	mm	12.70	.38	6.35	.38	3.78(M3.5)	-.07	3.18	.38	1.57	.03	7.92	.05	---	---	BRASS	.457
G410	in	.500	.015	.250	.015	.132(5BA)	-.003	.125	.015	.062	.001	.312	.002	---	---	BRASS	.018
T559	mm	12.70	.38	6.35	.38	3.35(M3)	-.07	3.18	.38	1.57	.03	7.92	.05	---	---	BRASS	.457
G410	in	.500	.015	.250	.015	.116(6BA)	-.002	.125	.015	.062	.001	.312	.002	---	---	BRASS	.018
	mm	12.70	.38	6.35	.38	---	---	3.18	.38	1.57	.03	7.92	.05	---	---	BRASS	.457
G410	in	.500	.015	.250	.015	.092(8BA)	-.002	.125	.015	.062	.001	.312	.002	---	---	BRASS	.018
T561	mm	12.70	.38	6.35	.38	2.34(M2)	-.05	3.18	.38	1.57	.03	7.92	.05	---	---	BRASS	.457