

Introduction

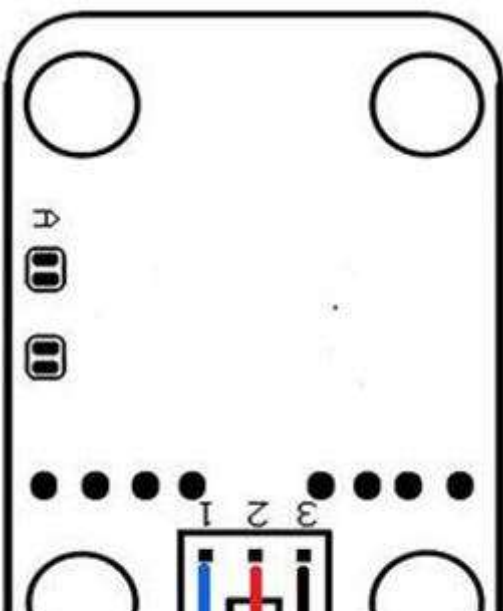
The MQ5 is used in gas leakage detecting equipment in consumer and industry applications, this sensor is suitable for detecting LPG, natural gas, coal gas. Avoid the noise of alcohol, cooking fumes and cigarette smoke. The sensitivity can be adjusted by the potentiometer.

Specification

- Power supply needs: 5V
- Interface type: Analog
- Pin Definition: 1-Output 2-GND 3-VCC
- High sensitivity to LPG, natural gas, town gas
- Small sensitivity to alcohol, smoke
- Fast response
- Stable and long life
- Simple drive circuit
- Size: 40x20mm

Pin Definition

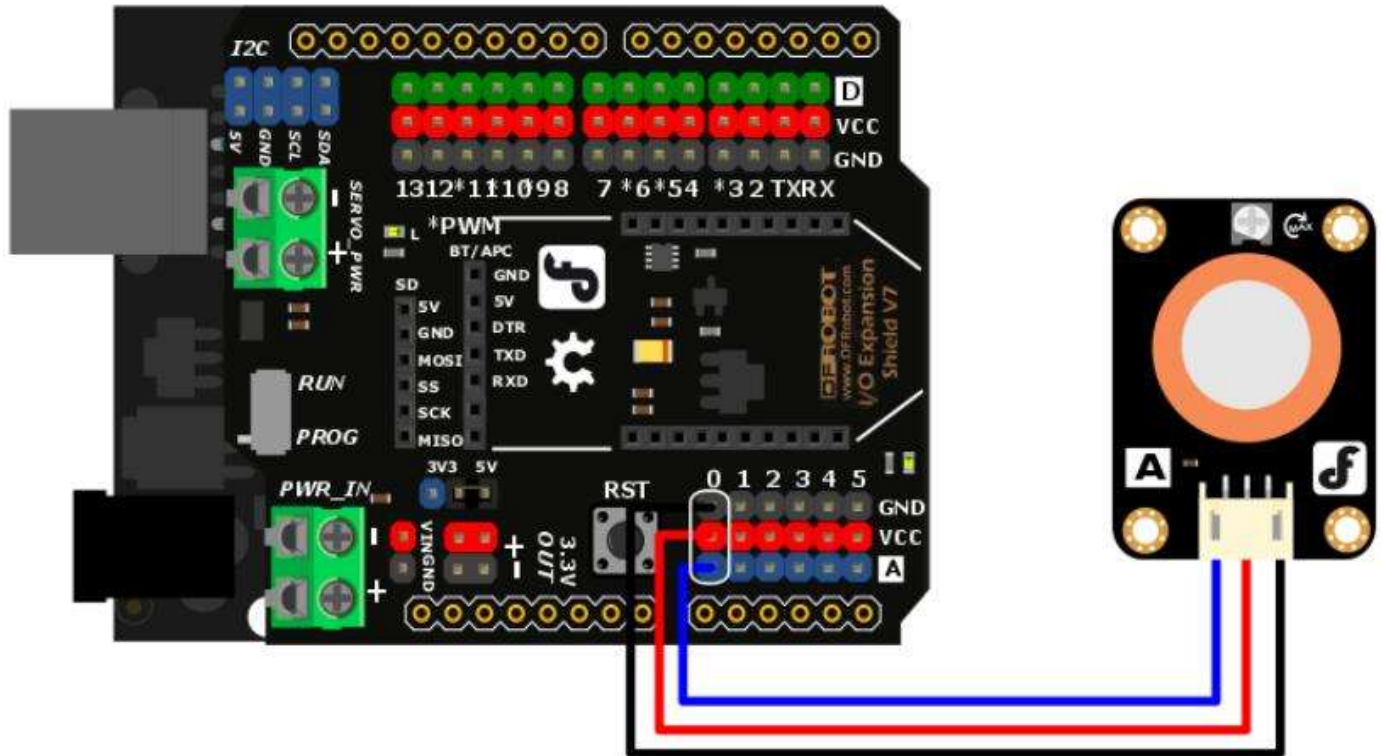
1. Signal Output
2. GND
3. Power





Output 5V GND

Connection Diagram



Sample Code

```

//Arduino Sample Code
void setup()
{
  Serial.begin(9600); //Set serial baud rate to 9600 bps
}
void loop()
{
  int val;
  val=analogRead(0);Read Gas value from analog 0
  Serial.println(val,DEC);//Print the value to serial port
  delay(100);
}

```

More Documents

 Get LPG Gas Sensor(MQ5) (<https://www.dfrobot.com/product-454.html>) from DFRobot Store or **DFRobot Distributor**. (<https://www.dfrobot.com/index.php?>

route=information/distributorslogo)

Category: [DFRobot](https://www.dfrobot.com/) (https://www.dfrobot.com/) > [Sensors & Modules](https://www.dfrobot.com/category-156.html) (https://www.dfrobot.com/category-156.html) > [Sensors](https://www.dfrobot.com/category-36.html) (https://www.dfrobot.com/category-36.html) > [Air Sensors](https://www.dfrobot.com/category-85.html) (https://www.dfrobot.com/category-85.html)

category: Product Manual (category__Product_Manual) category: DFR Series (category__DFR_Series) category: Sensors (category__Sensors) category:source (category_source) category:Diagram (category_Diagram)

Turn to the Top