



(<https://www.dfrobot.com/product-1456.html>)

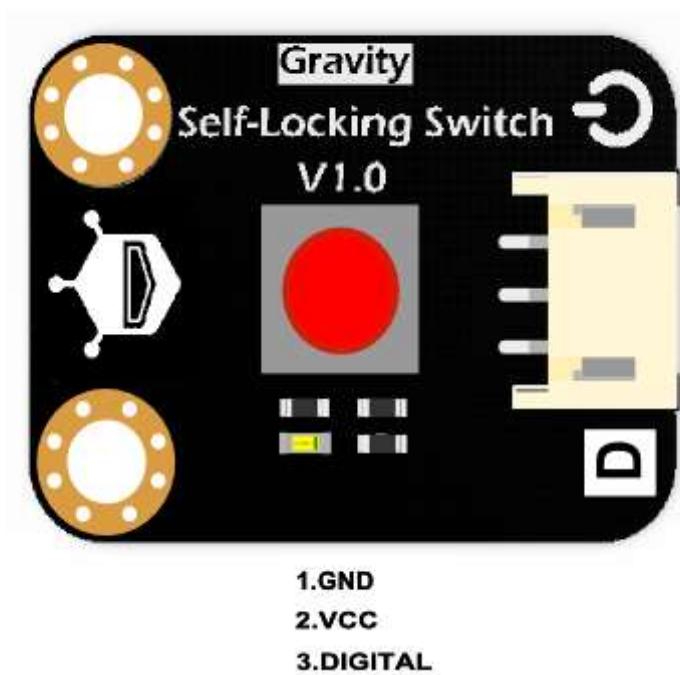
Introduction

This is a new digital switch module with self-locking function. It could record the status of the button, compatible with DFRobot Gravity 3-Pin interface. Easy to combine with Arduino I/O expansion shield, making very interesting projects. The module is using immersion gold process, safety and non-pollution. Press the button to turn on the LED.

Specification

- Operating Voltage: +3.3-5V
- Output Type: Digital
- Interface Mode: PH2.0-3P
- Dimension: 30*22mm/1.18*0.86 inches

Pinout



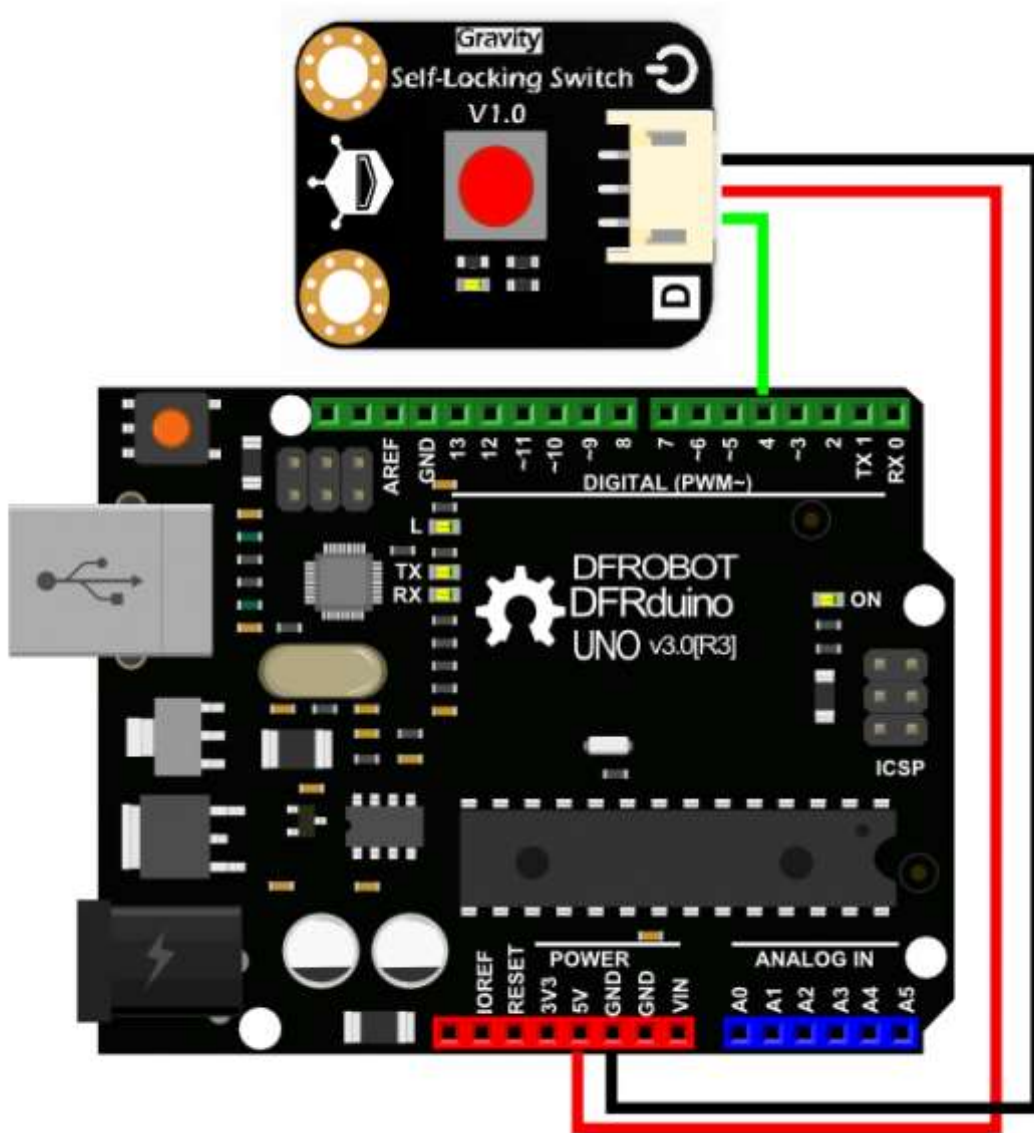
Tutorial

This is a simple test code, to test button pressed or not.

Requirements

- **Hardware**
 - UNO x1
 - Self-Locking Switch x1
 - Dupont cable xSome
- **Software**
 - Arduino IDE V1.6.8 [Click to Download Arduino IDE from Arduino®](https://www.arduino.cc/en/Main/Software)
(<https://www.arduino.cc/en/Main/Software>)

The Wiring Diagram



Sample Code:

```
/*
 * Self-Locking Swifth
 * This example light the LED when press the button
 *
 * @author linfeng(490289303@qq.com)
 * @version V1.0
 * @date 2016-1-25
 *
 * GNU Lesser General Public License.
 * See <http://www.gnu.org/licenses/> for details.
 * All above must be included in any redistribution
 */

int ledPin = 13;
int inputPin = 4;

void setup() {
  pinMode(ledPin, OUTPUT);
  pinMode(inputPin, INPUT);
}

void loop(){
  int val = digitalRead(inputPin);
  if (val == HIGH) {
    digitalWrite(ledPin, HIGH);
  } else {
    digitalWrite(ledPin, LOW);
  }
}
```

Results


When you pressed the button , the LED of the pin 13 on the main board is on; Button again, the LED is off.

FAQ

There are no question about this product yet. If you have any problems or suggestions, you are welcome to post on the DFRobot forum.

For any questions/advice/cool ideas to share, please visit **DFRobot Forum** (<https://www.dfrobot.com/forum/>).

More

 Shopping from **Self Locking Switch SKU:DFR0423** (<https://www.dfrobot.com/product-1456.html>) or **DFRobot Distributor**. (<https://www.dfrobot.com/index.php?route=information/distributorslogo>)