

MENDA

Quality Workstation Tools & Accessories Since 1947



MENDA Product Offering

- Liquid Pump Dispensers
- Specialty Tools
- Workbench Accessories
- ESD Fume Extractors
- ESD Vacuum Cleaners
- Custom Products and More!





MENDA PUMP GUIDE

One-Touch Pump

- Simple one-handed finger-tip dispensing
- Liquid drains into bottle to reduce evaporation
- Lockable travel model: Take-Along Pump



Pure-Touch Pump

- Dispensed fluid stays in the top dish and does not drain into bottle
- Prevents liquid contamination
- Lockable travel model: Pure-Take Pump



MENDA Pump Natural HDPE Liquid Dispensers



- Push-down pump top for easy dispensing
- Wide-neck opening
- Natural HDPE bottles - no color added
- Locking Pure-Take and Take-Along pump models available for travel

Item No.	Description
35304	One-Touch, 2 oz
35305	One-Touch, 4 oz
35309	One-Touch, 6 oz
35505	Pure-Touch, 4 oz
35508	Pure-Touch, 6 oz
35510	Pure-Touch, 8 oz
35802	Pure-Take, 2 oz
35803	Pure-Take, 4 oz
35805	Pure-Take, 6 oz
35701	Take-Along, 2 oz
35702	Take-Along, 4 oz
35704	Take-Along, 8 oz



Amber Glass Dispensers

- Dark glass bottle protects light sensitive fluids
- Translucent glass construction
- 4 oz bottle capacity
- Stainless-steel push-down pump top for easy dispensing
- Impact-resistant safety coated bottle options available
- Locking Pure-Take and Take-Along pump options available
- PFA stem options for tough chemical dispensing



Item No.	Description
35112	Pure-Touch, LDPE Stem
35315	One-Touch, LDPE Stem
35740	One-Touch, PFA Stem
35741	Pure-Touch, PFA Stem
35742	Pure-Take, PFA Stem
35743	Take-Along, PFA Stem
35744	Bottle Only, PFA Stem
35770	One-Touch, PFA Stem



Impact-Resistant Safety Coating (Plastisol)

Lasting Touch Dispensers

- Push-down pump top for easy dispensing
- Wide-neck opening
- Dark bottle options for light sensitive liquids
- Long-lasting imprinted labels



Item No.	Description
35601	Brown Round HDPE, 8 oz, Imprinted 'Alcohol'
35602	Brown Round HDPE, 8 oz
35603	Natural White Round HDPE, 8 oz
35608	Amber Round Glass, 8 oz, Imprinted 'Alcohol'

Twist-Lock Dispenser

- Locks with a twist for leak-free travel
- Push-down pump top for easy dispensing
- Durable and lightweight



Item No.	Description
35215	8 oz, White Pump
35216	8 oz, White, 'alcohol' Imprint
35235	8 oz, Black Pump

FEATURED PRODUCT

ESD Flux Dispensers



Custom Printing Available!

- Static dissipative HDPE durAstatic® bottles protect valuable static sensitive printed circuitry
- ESD properties embedded into the bottle and conductive cap
- Embossed with ESD symbol
 - Includes 3 different needle tip sizes: 18, 20, 26 GA
 - No migratory additives

Item No.	Description
35598	Flux Dispenser, Blue, 3-Needle
35599	Flux Dispenser, Yellow, 3-Needle
35610	Flux Dispenser, Blue, 3-Needle, Flux Label
35611	Flux Dispenser, Yellow, 3-Needle Flux Label
35567	Replacement Needles, 26 GA, 50/Pk
35568	Replacement Needles, 20 GA, 50/Pk
35569	Replacement Needles, 18 GA, 50/Pk
35570	Replacement Needles, 16 GA, 50/Pk

Frosted Glass Dispensers

- Translucent frosted glass bottle
- Allows storage of fluid not compatible with plastic
- Square base reduces risk of being knocked over and rolling off surfaces
- Attractive solution for display areas and show booths






Item No.	Description
35113	Pure-Touch, Blue Frosted Glass, 4 oz
35115	Pure-Touch, Blue Frosted Glass, 6 oz
35316	One-Touch, Blue Frosted Glass, 4 oz
35318	One-Touch, Blue Frosted Glass, 6 oz
35361	One-Touch, Clear Frosted Glass, 4 oz
35562	One-Touch, Clear Frosted Glass, 6 oz
35576	Pure-Touch, Clear Frosted Glass, 4 oz
35577	Pure-Touch, Clear Frosted Glass, 6 oz

durAstatic® Dispensers

- Static dissipative durAstatic® bottles protect valuable static sensitive printed circuitry
- No migratory additives
- 4 oz, 6 oz, and 8 oz bottle sizes available
- 6 oz bottles are embossed with graduated markings
- Highly visible bottle colors



Custom Printing Available!

Item No.	Description	Color
35267	Pure-Touch, 6 oz	Yellow
35268	Pure-Take, 6 oz 	Yellow
35270	One-Touch, 6 oz	Orange
35273	One-Touch, 6 oz	Green
35276	One-Touch, 6 oz	Yellow
35282	One-Touch, 4 oz	Blue
35283	One-Touch, 6 oz	Blue
35284	One-Touch, 8 oz	Blue
35285	Pure-Touch, 6 oz	Blue
35286	Pure-Take, 6 oz 	Blue
35287	Take-Along, 6 oz 	Blue



Embossed with ESD Protective Symbol

durAstatic® Dispensers with Flux Remover Print

- Static dissipative durAstatic® bottles protect valuable static sensitive printed circuitry
- Flux Remover printed label
- Includes MENDA One-Touch Pump
- Highly visible bottle colors
- 6 oz bottle size only



Item No.	Description	Color
35594	One-Touch, Flux Remover Print, 6 oz	Blue
35595	One-Touch, Flux Remover Print, 6 oz	Yellow
35596	One-Touch, Flux Remover Print, 6 oz	Green
35597	One-Touch, Flux Remover Print, 6 oz	Orange

FEATURED PRODUCT

Hazard Communication Safety (HCS) Dispensers and Bottles



Custom Printing Available!

- Static dissipative durAstatic® bottles protect valuable static sensitive printed circuitry
- Labels compliant with June 2015 OSHA Hazard Communication Safety Standards
- Printed with Right-to-Know (RTK) labels
- 6 oz HDPE bottle, no migratory additives

Item No.	Description	Color
35730	One-Touch, Acetone Print, 6 oz	Blue
35731	Bottle Only, Acetone Print, 6 oz	Blue
35732	Bottle Only, Acetone Print, 6 oz	Green
35733	Bottle Only, Acetone Print, 6 oz	Yellow
35734	Bottle Only, Acetone Print, 6 oz	Orange
35735	One-Touch, IPA Print, 6 oz	Blue
35736	Bottle Only, IPA Print, 6 oz	Blue
35737	Bottle Only, IPA Print, 6 oz	Green
35738	Bottle Only, IPA Print, 6 oz	Yellow
35739	Bottle Only, IPA Print, 6 oz	Orange
35760	One-Touch, Toluene Print, 6 oz	Blue
35761	Bottle Only, Toluene Print, 6 oz	Blue
35762	Bottle Only, Toluene Print, 6 oz	Yellow
35763	Bottle Only, Toluene Print, 6 oz	Orange
35764	Bottle Only, Toluene Print, 6 oz	Green

Black Conductive HDPE Dispenser

- Permanently black conductive HDPE provides maximum conductivity
- Conductive in the plastic will not readily contaminate contents of bottle
- Low tribocharging - will not easily produce a charge when moved or lifted
- Low internal contamination
- 6 oz HDPE bottle



Item No.	Description
35336	One-Touch, Black Conductive HDPE, 6 oz

durAstatic® Dispensers with Hazard Diamond Print

- Static dissipative durAstatic® bottles protect valuable static sensitive printed circuitry
- Blank hazard diamond, IPA, and Acetone printed labels available
- Includes MENDA One-Touch Pump
- Highly visible bottle colors





Item No.	Description	Color
35259	One-Touch, Blank Diamond Print, 6 oz	Blue
35271	One-Touch, Acetone Print, 6 oz	Orange
35272	One-Touch, IPA Print, 6 oz	Orange
35274	One-Touch, Acetone Print, 6 oz	Green
35275	One-Touch, IPA Print, 6 oz	Green
35277	One-Touch, Acetone Print, 6 oz	Yellow
35278	One-Touch, IPA Print, 6 oz	Yellow
35288	One-Touch, Acetone Print, 8 oz	Blue
35289	One-Touch, IPA Print, 8 oz	Blue
35298	One-Touch, Acetone Print, 6 oz	Blue
35299	One-Touch, IPA Print, 6 oz	Blue

Tin-Plated Steel Can Dispensers

- Stainless-steel MENDA pump with conductive tin-plated steel can dispenses tough fluids
- Allows storage of fluid not compatible with plastic
- PFA stem option available
- Locking pump options will not leak when engaged



Item No.	Description
35255	Pure-Take, Tin Can, 4 oz 
35256	Take-Along, Tin Can, 4 oz 
35335	One-Touch, Tin Can, 4 oz
35771	One-Touch Tin Can, 4 oz, PFA Stem

Replacement Stems

- Replacement stems for your favorite pumps
- LDPE: Fits 8 oz HDPE bottles (cut to fit any HDPE MENDA bottle)
- PFA: Fits 4 oz amber glass bottles



Item No.	Description
35005	LDPE Replacement Stem, 3.03 in, 25/Pk
35772	PFA Replacement Stem, 2.08 in, 10/Pk

Dissipative ESD Brushes

- ESD Brushes are ideal for removing dust, dirt and leftover materials from printed circuit boards (PCB) and other static sensitive components.
- Conductive carbon loaded polypropylene (PP) or stainless-steel handle
- Permanently static dissipative bristles made of highly visible yellow nylon 6.12 filament
- Handle hot stamped with ESD symbol
- Highly resilient, durable and abrasion resistant



Item No.	Description
35686	Flat, Nylon, PP Handle, 1 in
35687	Flat, Nylon, PP Handle, 2 in
35688	Long Handle, PP Handle, 1-3/16 in
35689	Curved Handle, PP Handle, 3 in x 1-1/2 in
35697	Round, PP Handle, 1/4 in
35698	Double-Sided, Nylon, Steel Handle, 1/2 in

Conductive ESD Brushes

- ESD Brushes are ideal for removing dust, dirt and leftover materials from printed circuit boards (PCB) and other static sensitive components.
- Dissipative polypropylene black handles and stainless-steel handles remove charges to ground when held by grounded personnel
- Bristles are a mix of conductive synthetic yarn and horse hair



Item No.	Description
35690	Round, PP Handle, 1/4 in
35691	Long Handle, PP Handle, 1-3/16 in
35692	Long Handle, PP Handle, 2-3/8 in
35693	Flat, PP Handle, 2 in
35694	Flat, PP Handle, 1/2 in
35695	Curved Handle, PP Handle, 3 in x 1-1/2 in
35699	Double-Sided, Steel Handle, 1/2 in

ESD durAstatic® Tool Box

- Static dissipative durAstatic® material protects valuable static sensitive components
- Embedded ESD properties - no surface coating to rub off
- Size: 14.5" x 7.5" x 5"
- Washable polypropylene material
- Includes inner lift-out tray



Tools Not Included

Item No.	Description
35870	Tool Box, Dissipative, Yellow durAstatic®

Low-Charging Cable Straps

- Low-charging hook and loop material meets ANSI/ESD S20.20*
- D-Ring fastening is ideal for bundling trays and IC tubes
- Adjustable, releasable and reusable
- Operating Temperature: 300°F max
- Melting Temperature: 459°F

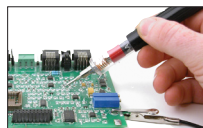


Item No.	Description
35653	Low-Charging Cable Strap, 3/4 in x 18 in
35654	Low-Charging Cable Strap, 3/4 in x 20 in
35655	Low-Charging Cable Strap, 3/4 in x 24 in
35656	Low-Charging Cable Strap, 3/4 in x 30 in

*Straps should be tested regularly to make sure they retain their ESD properties

Circuitracer® Continuity Testers

- Allow operators to test for continuity, shorts, grounds or the presence of voltage
- Illuminated lamp confirms electrical circuit continuity
- Powered by 2 AAA batteries
- Use on the assembly line or in the field



Item No.	Description
35100	3-in-1, Continuity/Voltage Tester, 1-10 Ohms, 0-60 volts, 60-600 volts w/ Lamp*
35121	Replacement Lamp, 3 Volt T13 Base
35130	Continuity only w/ Lamp, 0-10 Ohms
35135	Audible Continuity Tester, 0-50 Ohms

*35100 Batteries Not Included

FEATURED PRODUCT

ESD Protective Thermal Insulated Drinking Cup

Replacement for static generating cups or bottles on the workstation

- ESD Protective - Low charging
- Electrostatic charges removed to ground when picked up by a grounded operator or placed on a grounded surface
- Thermal Insulated Drinking Cup - Perfect for hot or cold drinks
- Hand wash only

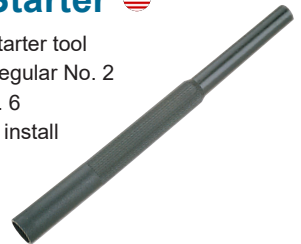


Custom Printing Available!

Item No.	Description
35890	Drinking Cup, Stainless Steel 16 oz

Small Nut Starter

- 4-way small nut starter tool
- Holds nut sizes Regular No. 2 through Small No. 6
- Helps to hold and install small mounting hardware
- Material: LDPE



Item No.	Description
35120	Small Nut Starter, 4 in

Reztore™ ESD Lotion

- Special dissipative ESD formulation for the electronic manufacturing environment
- Silicone free and non-contaminating
- Moisturizing and contains vitamin A, vitamin D, and aloe vera
- Non-greasy formula absorbs quickly
- Available in a Light Peach scent and Unscented



Item No.	Description
35659	Lotion, Clean, Unscented, 8 oz, 12/Pk
35660	Lotion, Peach Scented, 8 oz, 12/Pk
35661	Lotion, Peach Scented, 32 oz
35667	Lotion, Clean, Unscented, 32 oz



C-Type & D-Sub Connector Covers

- Conductive and ideal for clean applications
- Free of carbon black particulate
- Noncorrosive - tested to Federal Test Method 101C using Kovar test plates
- Composite material provides a snug, secure fit

Item No.	Description
35780	D-Sub, 32A-15P, 1000/CS
35781	D-Sub, 32A-15S, 1000/CS
35782	D-Sub, 32A-25P, 1000/CS
35783	D-Sub, 32A-25S, 1000/CS
35784	D-Sub, 32A-37P, 1000/CS
35785	D-Sub, 32A-37S, 1000/CS
35786	D-Sub, 32A-50P, 1000/CS
35787	D-Sub, 32A-50S, 1000/CS
35788	D-Sub, 32A-9P, 1000/CS
35789	D-Sub, 32A-9S, 1000/CS



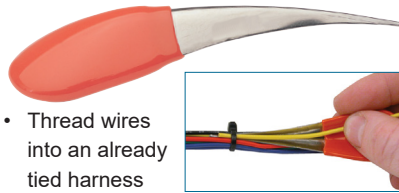
D-Sub Connector Covers
Mil-Spec M5501/32A
(Formerly 4272 Series)

Item No.	Description
34205	Circular, 31A-60S, 1000/CS
34206	Circular, 31A-530, 1000/CS
34207	Circular, 31A-720, 1000/CS
34208	Circular, 31A-65S, 1000/CS
34209	Circular, 31A-850, 1000/CS
34210	Circular, 31A-78S, 1000/CS
34211	Circular, 31A-973, 1000/CS
34212	Circular, 31A-893, 1000/CS
34213	Circular, 31A-1093, 1000/CS
34214	Circular, 31A-1028, 1000/CS
34215	Circular, 31A-112S, 1000/CS
34216	Circular, 31A-1231, 500/CS
34217	Circular, 31A-1150, 500/CS
34218	Circular, 31A-1340, 500/CS
34219	Circular, 31A-1270, 500/CS
34220	Circular, 31A-1463, 500/CS
34221	Circular, 31A-1390, 500/CS
34222	Circular, 31A-1540, 500/CS
34223	Circular, 31A-171S, 500/CS
34224	Circular, 31A-164S, 500/CS
34225	Circular, 31A-196S, 250/CS
34226	Circular, 31A-1890, 250/CS
34227	Circular, 31A-221S, 250/CS
34228	Circular, 31A-2140, 250/CS
34229	Circular, 31A-250, 1000/CS
34230	Circular, 31A-313, 1000/CS
34231	Circular, 31A-37S, 1000/CS
34232	Circular, 31A-480, 1000/CS
34233	Circular, 31A-413, 1000/CS
34234	Circular, 31A-500, 1000/CS



Circular Connector Covers
Mil-Spec M5501/31A
(Formerly 4270 Series)

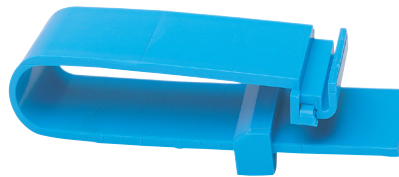
Wire Harness Threader



- Thread wires into an already tied harness
- 300 series stainless steel construction
- Bright orange PVC cover for soft slip resistant grip

Item No.	Description
35250	Wire Threader For Cable Harness

Hand Sleeve Cutter

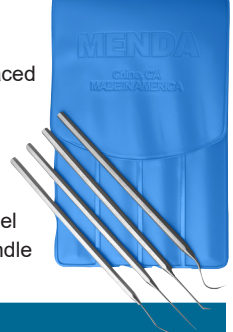


- Adjustable stop: Allows cutting of sleeving to specified lengths
- Ruler on side: Helps to gauge cut length

Item No.	Description
35175	Hand Sleeve Cutter
35177	Replacement Blades, 100 Pack

Stainless Steel Probes

- ESD Protective: Any charge can be grounded when placed on ESD protected work surface
- Non-magnetic, conductive 300 series stainless steel
- Ergonomic hex handle



Item No.	Description
35122	Steel Probe, Straight 5-1/2 in
35123	Steel Probe, Hook 5-1/2 in
35617	Steel Probe, Angle 5-1/2 in
35623	Steel Probe, Curved 5-1/2 in
35630	Steel Probe Kit, Four Tools

Screw-O-Saurus Pliers

- Multi-purpose screw remover for round, truss and pan head screws
- Vertical and horizontal serrations grasp screw head with no slip
- Removes rusted, stripped or stuck screws
- Wire cutter with spring loaded handle
- Cushioned grip



Item No.	Description
35996	Screw-O-Saurus Pliers

Extract-O-Saurus Pin Extractor

- Low charging
- Remove plastic stops, pins, and end plugs from integrated circuit shipping tubes
- Spring loaded to open
- Place the nipper over the end of the end plug or pin, snap shut and pull out the stopper



Item No.	Description
35180	Extract-O-Saurus Pin Extractor

FEATURED PRODUCT

Non-Marring Probes & Spudgers

TOP SELLER! 35622 NYLON PROBE

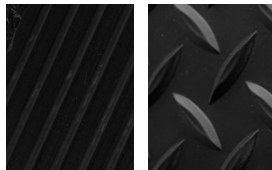
- Can be used in ESD protected areas
- Nylon and wood materials will not mar delicate surfaces
- Ideal for opening plastic cases such as MP3 players, cell phones, laptops and more
- Temperature resistant



Item No.	Description
35517	Birchwood Probe, Spudger, 7 in.
35616	Birchwood Probe, "Orangestick", 100 Pack
35618	Nylon Probe, Point- Screwdriver, 7 in.
35619	Nylon Probe, Fork-Blade, 7 in.
35621	Nylon Probe, Spudger, 5-1/2 in.
35622	Nylon Probe, Point-Blade, 6 in.

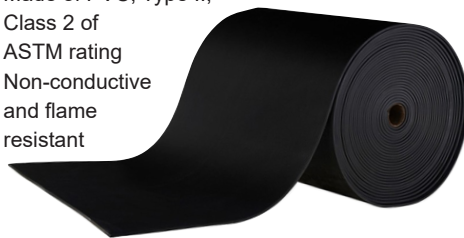
Switchboard Matting Rolls

- For use in high voltage work spaces, such as power boards, electrical rooms, transformer stations, and motor control centers
- Designed to safely insulate employees working on or in the vicinity of high voltage
- ASTM D178-01 Dielectric resistant test voltage of 30,000 VAC
- Recommended maximum use of 17,000 VAC voltage equipment by interrupting the electrical path to ground
- Complies with OSHA standards
- Made of PVC, Type II, Class 2 of ASTM rating
- Non-conductive and flame resistant



Corrugated

Diamond



Item No.	Description
35880	Corrugated Tread, 0.25 in x 24 in x 75 ft
35881	Corrugated Tread, 0.25 in x 30 in x 75 ft
35882	Corrugated Tread, 0.25 in x 36 in x 75 ft
35883	Corrugated Tread, 0.25 in x 48 in x 75 ft
35887	Diamond Tread, 0.25 in x 36 in x 75 ft
35889	Diamond Tread, 0.25 in x 48 in x 75 ft

Black Anti-Fatigue Mats

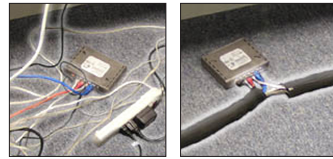
- Ideal for employees standing for long periods of time
- Anti-fatigue sponge base with a durable rubber top
- Easy to clean, and chemical and puncture resistant
- Beveled edges make it easy to roll chairs and/or carts over
- Anti-slip backing



Item No.	Description
35997	Anti-Fatigue Mat, Solid Black, 2 ft x 3 ft x 1/2 in
35999	Anti-Fatigue Mat, Solid Black, 3 ft x 5 ft x 1/2 in

Modular Cable Cover

- Manage your cables and protect large cables from wear
- Prevent trip hazards
- Durable woven material
- Zip two covers together for wider cable sets



Before

After

Item No.	Description
35657	Modular Cable Cover, 54 in

TIG Welding Cable Covers

- Protect TIG torch cables
- Woven black nylon with zipper closure
- Resistant against mildew, aging, and abrasion
- Suitable for torch sizes 12 and 27
- Operating Temp: 410°F



Item No.	Description
35640	TIG Welding Cable Cover, 10 ft x 4 in
35641	TIG Welding Cable Cover, 10 ft x 3 in
35642	TIG Welding Cable Cover, 2 ft x 4 in
35643	TIG Welding Cable Cover, 48 ft x 4 in
35644	TIG Welding Cable Cover, 98 ft x 3 in

Workstation Organizers



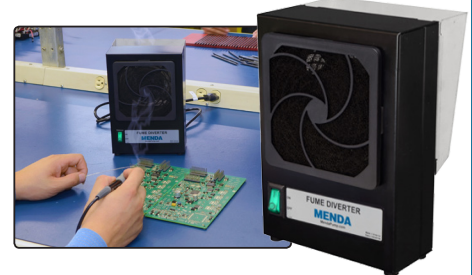
- Made from an extruded conductive polypropylene Plastek™ material
- Standardize any ESD workstation
- Chemical and moisture resistant
- Economical alternative to injection molded products



Item No.	Description
35873	Assembly Workstation Organizer, Box Only*
35874	Workstation Organizer, 6 Cells, Box Only*
35878	Workstation Organizer, Mini, Box Only*

*Tools Not Included

Fume Diverter, 120 VAC



Heavy duty smoke diverter with corrosion proof steel enclosure for maximum durability.

- Quiet, high volume fan redirects soldering smoke away from the operator
- Corrosion proof steel enclosure for maximum durability
- Magnetic diverter attachment allows for redirection of exhaust
- Replaceable carbon filter

Item No.	Description
35463	Fume Diverter, 120 Vac
35464	Diverter Attachment
35465	Replacement Carbon Filter

ESD Blow Vac



- Dissipative attachments and accessories
- Dual function blower and vacuum
- Durable compact design
- Advanced 5-Stage filtration system with particle retention down to 0.3 micron
- UL Listed



- Dimensions: 12.5" x 5" x 7.5"
- Weight: 4.8 lbs
- Suction: 80 W.G.

Item No.	Description
35840	Blow Vac, Complete System, 120VAC
35841	Blow Vac, Complete System With Adjustable Air Flow, 120VAC
35843	Blow Vac, Complete System* With Adjustable Air Flow, 230VAC
35834	Stretch Hose, 4 ft
35835	Mini Attachment Set (7 pieces)
35836	Two-Part Blower Assembly
35837	Micromotor Filter, HEPA
35838	Micromotor Filter, Standard
35839	Filter Bag, 10/Pk

*Power Cord Not Included



ESD Service Vacuum

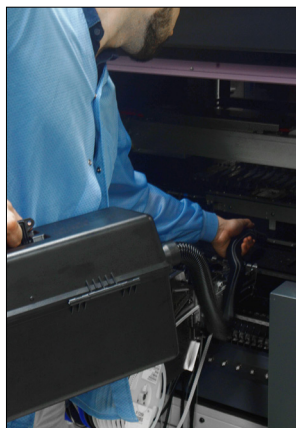


- ESD-safe self-contained unit designed for high-efficiency cleanup
- Ideal for removing toner and dust or cleaning data processing equipment
- Portable, quick setup
- Detachable power cord for easy storage
- Suction: 51"/H2O
- Weight: 11 lbs
- Dimensions: 17.8" x 7.8" x 9.3"



Item No.	Description
35867	ESD Service Vacuum, 120VAC, Complete System
35868	ESD Service Vacuum, 220VAC, Complete System*
35822	Filter, Type 2, For Toner And Dust
35823	Filter, Type 1, Fine Particles
35824	Carrying Strap
35825	Hose Assembly
35826	Crevice Nozzle Attachment
35827	Crevice Brush Attachment
35828	Bent Wand Assembly
35829	Needle Nose Nozzle Attachment
35830	Dusting Brush Attachment

*Power Cord Not Included



Portable & Lightweight for High-Efficiency Clean Up

Solo Fume Extractor

- Complete operating system for a single operator
- Comprehensive filter system
- HEPA filtration 99.997% effective to 0.3 Microns.
- Gas & HEPA filter available separately
- Thermal trip circuit
- Portable and low maintenance
- Dimensions: 15" x 10" x 10"
- Weight: 15 lbs.
- CFM with filter: 53
- Maximum number of operators: 1
- Noise level: 54dba



Item No.	Description
35440	Solo Fume Extractor, HEPA Complete System, 120VAC
35441	Solo Fume Extractor, HEPA Complete System, 220VAC
35450	Pre-Filter, 5 Pack
35451	Combined Filter (HEPA)
35452	Gas Filter (Gas & HEPA)
35453	Table Bracket
35454	Flip-Top System
35455	Arm With Funnel, 30 in
35456	Arm With Nozzle, 30 in
35457	Flex Hose, 39 in
35458	Jubilee Clip, 30 in



Does Not Interfere With Use Of Soldering Iron

FEATURED PRODUCT

Series II Fume Extractor, 120VAC

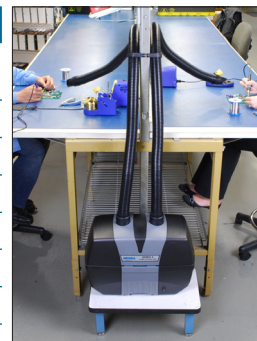


- ESD-safe housing
- Two-arm filtration system that combines powerful fan performance with efficient filtration
- Portable and compact design
- For extraction of fumes, particles and vapors
- Audible alarm informs operators when filters need replacing
- Easy access on/off remote switch
- Connects to 50mm (2") or 63mm (2.5") hoses or exhaust arms
- Construction: Plastic
- Main filter efficiency: 95% at 0.3 micron



- Dimensions: 20" x 15-5/16" x 10"
- Weight: 20 lbs (9kg)
- CFM: 90
- Noise level: < 55 dbA
- Maximum operators: 2

Item No.	Description
35470	Series II Fume Extractor, Complete System, Plastic, 120V
35471	Pre-Filters, (Pack Of 5)
35472	Main Filter, "HEPA"
35473	Deep Bed, Gas Filter
35474	Main Filter, "Non-HEPA"
35475	2-1/2 ft Arm With 6 ft Hose & Bracket
35476	Arm With Bracket & Clamps
35477	Flexible Exhaust Arm, 2-1/2 ft
35478	Flexible Exhaust Arm, 5 ft
35479	Table Bracket & Clamps
35480	Connect Hose, 6 ft Long, 2 in Dia.
35481	Connect Hose, 12 ft Long, 2-1/2 in Dia.
35482	Remote Power Switch



Placed Under Or Next To The Bench-Top

High Performance HEPA Vac, 120VAC



- ESD protected vacuum for cleaning debris from surface mount, pick and place, board routers, handlers and other equipment in your ESD protective areas
- Complete system includes ESD protected utensils: hose, gooseneck, crevice tool, crevice attachment brush, round brush
- 99.97% efficient at 0.3 micron HEPA filtration
- Great for field service applications
- Lead-free RoHS compliant




- Suction: 56"/H2O
- Weight: 4 Pounds
- Size: 12" x 5.25" x 7"
- Energy Consumption: 600 Watt

Item No.	Description
35852	High Performance HEPA Vac, Complete System 120VAC
35857	High Performance HEPA Vac, Complete System With Case & Filter, 120 VAC
35855	Replacement Filter



ESD Dissipative Vinyl Tool Roll-Up Pouch


 Durable, blue dissipative vinyl construction

- For organizing and issuing tools to operators
- Store up to 18 tools
- Unrolled Dimensions: 20" x 12.5"



Item No.	Description
35981	Static Dissipative Tool Roll-Up

ESD Arm Badge Holders


 Made with a custom dissipative material made exclusively for Desco Industries

- Ideal for active personnel
- Adjustable black elastic band
- Reduce risk of entanglement



Item No.	Description
35193	Arm Badge, 2-3/8 in x 3-3/8 in (IS), Clear
35194	Arm Badge, 2-3/8 in x 3-3/8 in (IS), Yellow

ESD Badge Holders

 Made with a custom dissipative material made exclusively for Desco Industries

- Highly visible with yellow header and ESD Protective Symbol
- Horizontal and vertical orientations available



Custom Sizes Available

Item No.	Description
35009	Clip-On, Vertical, 2-1/8 in x 3-3/8 in (IS)
35010	Clip-On, Vertical, 2-3/8 in x 3 in (IS)
35011	Clip-On, Horizontal, 3-5/8 in x 1-7/8 in (IS)
35012	Clip-On, Horizontal, 3-7/8 in x 2-1/8 in (IS)
35013	Clip-On, Horizontal, 4 in x 2-5/8 in (IS)
35014	Proximity, Vertical, 2-1/8 in x 3-3/8 in (IS)
35015	Proximity, Horizontal, 3-5/8 in x 2-3/8 in (IS)
35016	Zipper, Vertical, 2-3/8 in x 3-3/8 in (IS)
35017	Zipper, Horizontal, 3-3/8 in x 2-3/8 in (IS)

ESD Dissipative Vinyl Tool Pouch with Zipper

 9" x 6"


- Dissipative tool pouch
- Recloseable zipper
- Ideal for use by engineers, production workers, field service engineers, etc.



*Tools Not Included

Item No.	Description
34458	ESD Pouch with Zipper, 9 in x 6 in

ESD Bottle Hang Tags


 Made of custom dissipative vinyl

- For additional ESD labeling
- 2-1/4" x 2-1/4" (Insert Size) inside pouch prevents the label from getting wet
- Includes inner anti-print, non-ESD vinyl liner
- Can fit a folded 8.5" x 11" paper



Item No.	Description
35393	ESD Bottle Hang Tag, Pre-Punched Hole, 10/Pk
35394	ESD Bottle Hang Tag, 10/Pk

ESD Dissipative Strap Clips

-  Dissipative vinyl strap clips
- Rust-resistant nickel-plated steel clip
 - ESD protective symbol print




Item No.	Description
34431	ESD Dissipative Strap Clip, 2-7/8"
34432	ESD Dissipative Strap Clip, 3-1/2"

FEATURED PRODUCT

ESD Shop Travelers

Ideal for use by electronic manufacturers who work with ESD sensitive components




 Dissipative vinyl
1 x 10⁴ to < 1 x 10¹¹ ohms, per ANSI/ESD STM11.11

- Designed to hold standard "A" size 8-1/2" x 11" documents
- Includes reinforced metal hang hole
- Outer Dimensions: 10" x 12"

Item No.	Description
34450	Solid Yellow Backing, 10/PK
34451	Solid Light Blue Backing, 10/PK
34452	Yellow Backing with Zipper, 10/PK
34453	Light Blue Backing with Zipper, 10/Pk
34454	Red Header with Zipper, 10/PK
34455	Blue Header with Zipper, 10/PK
34456	Green Header with Zipper, 10/PK
34457	Yellow Header with Zipper, 10/PK

ESD Breakaway Vinyl Lanyard

-  Dissipative breakaway lanyard for short term use
- Lanyard: 1/8" wide
 - Soft, frosty clear vinyl presents a low profile that doesn't compete with clothing
 - Breakaway snap closure



Item No.	Description
35067	Breakaway Lanyard Strap, ESD Safe, 27 in

CONTACT US

MENDA
3651 Walnut Avenue
Chino CA 91710 USA

Phone: (909) 627-2453

Email: Service@MendaPump.com

Website: MendaPump.com

