

STRAIGHT BULKHEAD RECEPTACLES WITH SOLDER POT

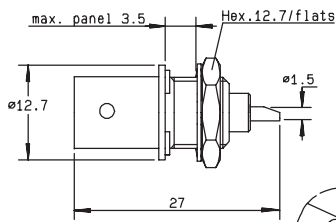


Fig. 1

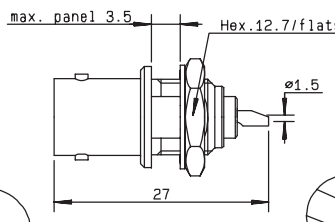


Fig. 2

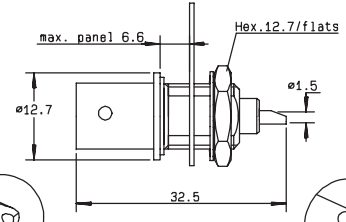


Fig. 3

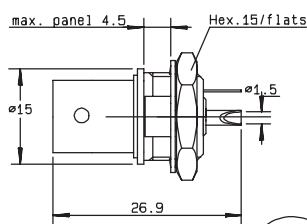


Fig. 4

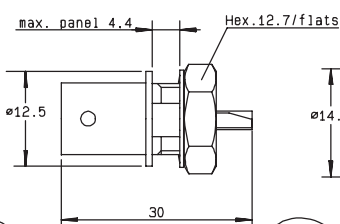


Fig. 5

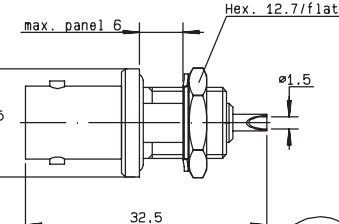


Fig. 6

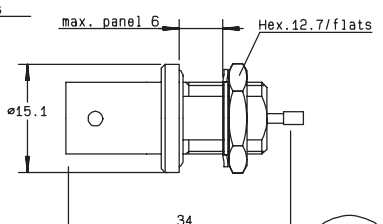
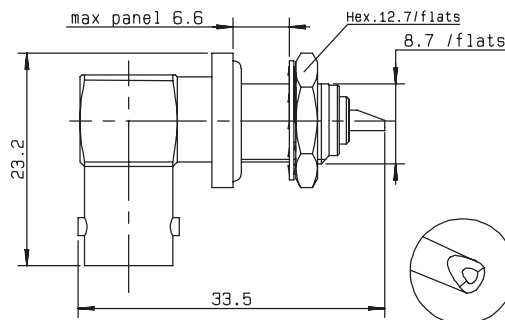


Fig. 7

part number	fig.	captive center contact	cut out	note
R141 554 000	1	yes	P20	
R141 557 000*	2	yes	P07	
R141 559 000	3	yes	P07	solder tag
R141 572 000*	4	yes	P05	insulated receptacle + solder tag
R141 574 000	5	yes	P07	insulated receptacle + solder tag
R141 603 000	6	yes	P22	fully sealed/Q200-5 insulator
R141 605 000	6	yes	P22	fully sealed
R141 625 000	7	yes	P07	hermetically sealed

RIGHT ANGLE BULKHEAD RECEPTACLE WITH SOLDER POT



part number	captive center contact	cut out
R141 680 000	yes	P07

* Packaging = 100 pieces.