

Mounting Rails

Depending on the various applications, the mounting rails are made of steel, aluminum or copper. All steel versions are electroplated and additionally passivated with a yellow chromate coating. All mounting rails are available in 1 m and 2 m lengths.

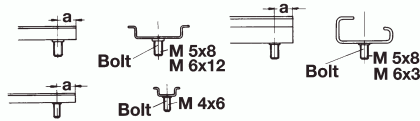
All non-slotted mounting rails can be provided with fixing holes (please state dimensions l [length], b [width of slot or hole diameter], and l₂ [length of slot or center of hole]).

The mounting rail can also be used as a protective busbar. Weidmüller PE terminals of the W- and SAK-Series meet the requirements specified in VDE 0611, Part 3. In accordance with VDE 0100, Part 540, at conductor cross-sections of 10 mm² and more, protective conductors and neutral conductors can be combined into one line with the symbol PEN.

If the mounting rail is used as a PEN busbar, the following criteria must be observed:

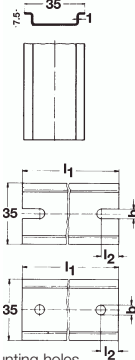
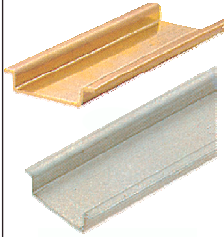
- Only an E-Cu profile may be used
- The short-circuit currents and the rated thermal currents must be observed
- The mounting rails must be insulated for the protective measure "protective insulation."

Additionally, all non-slotted steel rails can be supplied with welded steel bolts (please state dimension a and the desired bolt).



TS 35x7.5

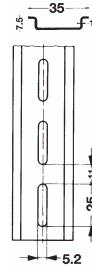
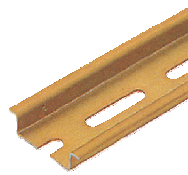
Solid Steel
Solid Copper



Mounting holes
Dimension b to specs (dia. 3.5/4.5/5.5/7)
Dimension l₂ to specs
Dimension l₁ up to 2 m

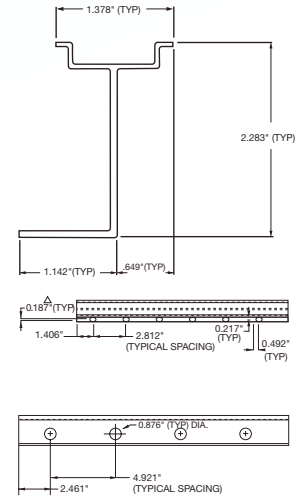
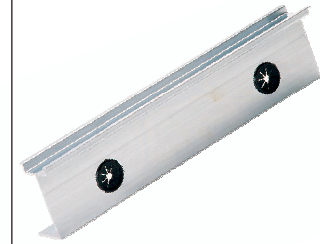
TS 35x7.5

Slotted steel

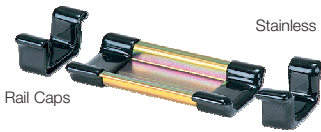


TS 35x7.5/2.25

Aluminum



Available Options	Version	Type	Part No.	Type	Part No.	Type	Part No.
	Steel, l = 2 m	TS 35x7.5	38340				
	Steel, l = 1 m	TS 35x7.5	38341				
	Slotted steel, l = 2 m			TS 35x7.5 (5 mm slot)	51450		
	Slotted steel, l = 2 m			TS 35x7.5 (6 mm slot)	67620		
	Slotted steel, l = 1 m			TS 35x7.5 (5 mm slot)	51451		
	Aluminum	TS 35x7.5	0330800000			1 m	999716
						2 m	999789
	Stainless steel, l = 2 m	TS 35x7.5	997479				
	Solid Cu	TS 35x7.5	9960490000				
	Gray PVC						
	Rail caps		67600542		67600542		
	PVC grommet						67600765



Technical Data	St	Al	St
Material	St 2, zinc plated	AL, bare	St 2, zinc plated
Standard	50022	50022	50022
Short-circuit resistance = E-Cu conductor	16 mm ²	35 mm ²	16 mm ²
Max. short-circuit current	1.92 kA	4.2 kA	1.92 kA
Max. allowable rated current for PEN function			

Pre-Cut Rail (Steel)	Part No.	Part No.
All pre-cuts come with end mounting slots (1/4" x 1/2")		
Pre-cut 2" (50.8 mm)		9139130000
Pre-cut 3" (76.2 mm)		9139140000
Pre-cut 4" (101.6 mm)		9139150000
Pre-cut 5" (127.0 mm)		9139160000
Pre-cut 6" (152.4 mm)	9150600000	9139170000
Pre-cut 7" (177.8 mm)	9150610000	9176820000
Pre-cut 8" (203.2 mm)	9150620000	9139180000
Pre-cut 9" (228.6 mm)	9150630000	9139190000
Pre-cut 10" (254.0 mm)	9150640000	9139210000
Pre-cut 11" (279.4 mm)	9150650000	9139220000
Pre-cut 12" (304.8 mm)	9150660000	9139230000
Pre-cut 13" (330.2 mm)	9150670000	9139240000
Pre-cut 14" (355.6 mm)	9150680000	9176810000
Pre-cut 15" (381.0 mm)	9150690000	9139250000
Pre-cut 16" (406.4 mm)	9150700000	9139260000
Pre-cut 17" (431.8 mm)	9150710000	9139270000
Pre-cut 18" (457.2 mm)	9150720000	9139280000
Pre-cut 19" (482.6 mm)	9150730000	9139290000
Pre-cut 20" (508.0 mm)	9150740000	9139310000
Pre-cut 24" (609.6 mm)	9150780000	

**Pre-cut comes with two center mounting holes for additional support (1/4" diameter)