

cell type: Li-Ion
cell size: 18650
built-in cell: LG INR 18650 F1L 3350mAh

Conditions

nominal voltage: 3.6 V

capacity

nominal: 3400 mAh discharge at 0.2C
 minimum: 3250 mAh discharge at 0.2C
 3000 mAh discharge at 1C
 ta: 20°C; EV(Discharge End Voltage): 2.50V

discharge

max. continuous discharge current: 4875 mA ta: 0...45°C
important: avoid cell temperature above 60°C
 discharge end voltage: ≥ 2.5 V (recommended)

external charge (at +/- poles)

charging method: CC - CV (Constant Current - Constant Voltage)

charge current: 650 mA at standard charge
 max. charge current: 1625 mA at rapid charge
 charge end voltage: 4.2 V ± 50mV

charge cut off

by time: 5...6 h at standard charge
 2.75...3.25 h at rapid charge
 by current drop: 50 mA end current - cut off

charge via micro USB connector (with USB charger)

supply voltage: 5 V ± 0.25V
 charge current: ≤ 1150 mA
 charge time: ≤ 4 h at 1A charge

internal resistance: ≤ 100 mΩ at 1kHz, sine wave measurement according to IEC 896-2

energy: 12.24 Wh

protection functions

overcharge cut off voltage: 4.3 V ± 0.05V
 deep disch.cut off voltage: 2.5 V ± 0.1V
 overload cut off current: 12 A max.

LED charge indicator

(w. micro USB charge) lights red during charge
 lights green end of charge; battery fully charged

life time expectance

(C>70% of min. capacity) ≥ 300 cycles at 0.5C charge/discharge rate

self discharge:

≤ 2 %/month at 20°C
 ≤ 5 %/month at 30°C
 ≤ 10 %/month at 40°C

ambient temperature range:

0...45 °C charge
 - 20...60 °C discharge
 - 20...25 °C storage max. 1year
 - 20...45 °C storage max. 3months

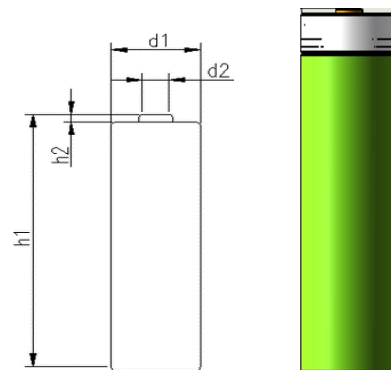
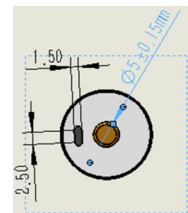
recommended SOC:


(SOC = state of charge) 30...50 % for long-time stoarge

mechanical specifications

cell dimensions (incl. sleeve)

diameter d1: 18.5 ± 0.3 mm
 diameter d2: 5 ± 0.5 mm
 height h1: 70.0 - 2 mm
 height h2: 0.5 + 0.3 mm
 weight: 49 ± 3 g



	ANSMANN Specifications for model: Protected 18650 Li-Ion Battery 3.6V 3400mAh w. Micro USB Charge
	data sheet no. / part no.
	supplier no.
	author / date