

AC1200 Wi-Fi Range Extender

Model: ME30

// Highlights

- **AC1200 Dual Band WiFi** — Keep your whole home connected with strong Wi-Fi expansion at combined speed of up to 1.2 Gbps
- **Eliminate WiFi Dead Zones** — Boosts WiFi signal to previously unreachable or hard-to-wire areas flawlessly
- **Easy One-Touch Setup** — Simply press the WPS button to expand your Wi-Fi coverage in seconds
- **Built-In Access Point Mode** — Connect your wired internet connection to the ME30 via Ethernet cable to turn it into a dual band Wi-Fi access point



AC1200 Dual Band
High-Speed Wi-Fi



Eliminates Wi-Fi
Dead-Zones



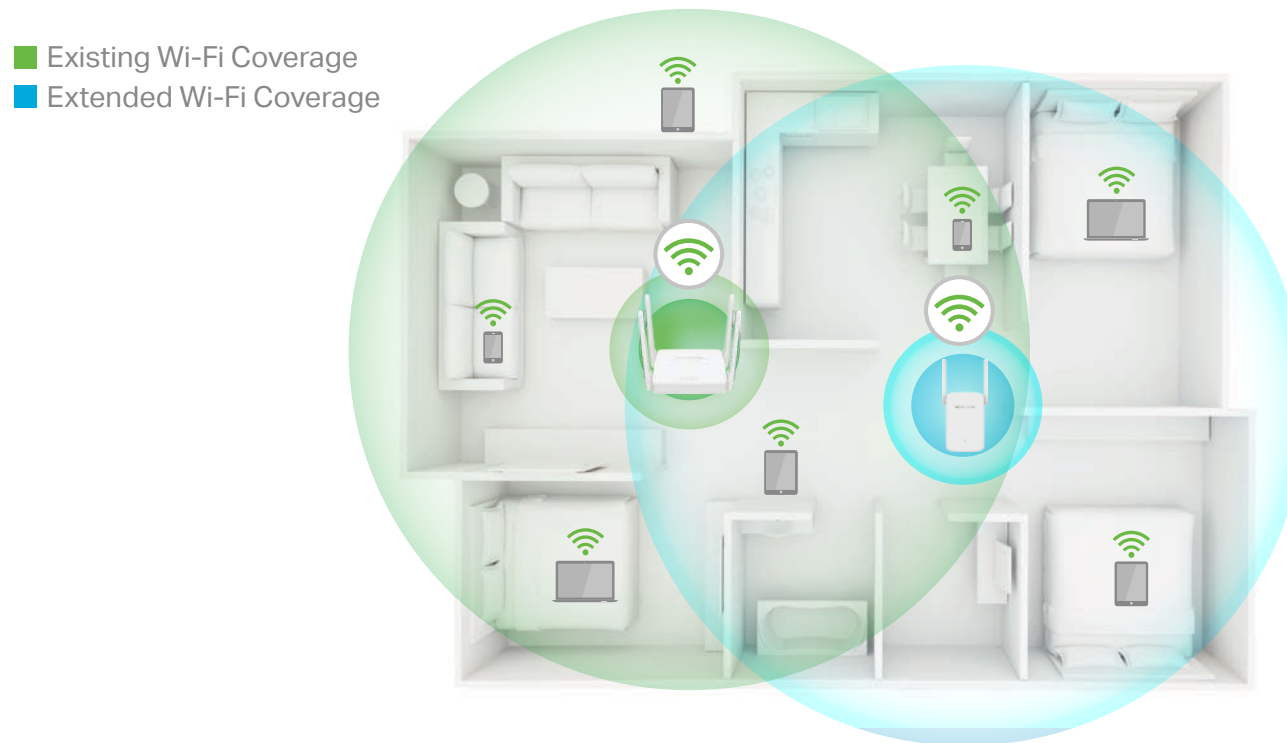
Easy One-Touch
Setup



Built-In Access
Point Mode

// Extend WiFi to Where You Need It Most

The ME30 wall-mounted range extender with adjustable high-gain antennas easily expands your Wi-Fi router's coverage, letting you finally eliminate Wi-Fi dead zones from your home. Enjoy the high speed expansion WiFi wherever you need.



// Connections

The ME30 boosts your existing Wi-Fi range and delivers fast wireless speed in hard-to-reach area, providing reliable connections for smartphones, tablets, laptops and other wireless-enabled devices.



// Specifications

Physical Specifications

Port

10/100Mbps RJ45 Port

Button

RESET/WPS Button

Antennas

2 External Antennas

Power Consumption

9.2 W

Dimensions (L x W x H)

112*84.7*39 mm

Wireless Specifications

Wireless Standards

IEEE 802.11a/n/ac 5GHz, IEEE 802.11b/g/n 2.4GHz

Frequency

2.4 - 2.5 GHz, 5 GHz

Signal Rate

Up to 1200 Mbps (867 Mbps on 5 GHz, 300 Mbps on 2.4 GHz)

EIRP

< 20 dBm

Reception Sensitivity

5GHz:

11ac HT80 MCS9 < -63 dBm

2.4GHz:

11n HT40 MCS7 < -70 dBm

Wireless Security

WEP, WPA-PSK/WPA2-PSK

Other Specifications

Certification

CE, RoHS

Environment

- Operating Temperature: 0°C~40°C (32°F~104°F)
- Operating Humidity: 10%~90% Non-Condensing

Package Contents

- Wi-Fi Range Extender (ME30)
- Quick Installation Guide

Specifications are subject to change without notice. MERCUSYS is a registered trademark of MERCUSYS TECHNOLOGIES CO., LTD. Other brands and product names are trademarks or registered trademarks of their respective holders. Copyright © 2020 MERCUSYS TECHNOLOGIES CO., LTD. All rights reserved.

*Maximum wireless signal rates are the physical rates derived from IEEE Standard 802.11 specifications. Actual wireless data throughput and wireless coverage are not guaranteed and will vary as a result of network conditions, client limitations, and environmental factors, including building materials, obstacles, volume and density of traffic, and client location.