



## Main

Range of product	Harmony Relay
Product or component type	Socket
Contact terminal arrangement	Separate
Device short name	RGZ

## Complementary

Product compatibility	Plug-in relay RXG with 2 C/O contact
Shape of pin	Flat
[Ui] rated insulation voltage	250 V
[Uimp] rated impulse withstand voltage	4 kV
[In] rated current	5 A
[Ue] rated operational voltage	250 V conforming to IEC 300 V conforming to UL
Dielectric strength	2500 V
Connections - terminals	Spring clamp terminals (push 'n stay), 1 x 0.5...1 x 1.5 mm <sup>2</sup> (AWG 20...AWG 16) flexible with cable end Spring clamp terminals (push 'n stay), 1 x 0.5...1 x 1.5 mm <sup>2</sup> (AWG 20...AWG 16) solid without cable end
Fixing mode	Clip-on (35 mm symmetrical DIN rail)
Length	98 mm
Width	16 mm
Height	67 mm
Net weight	0.042 kg

## Environment

Ambient air temperature for storage	-40...85 °C
Ambient air temperature for operation	-40...70 °C

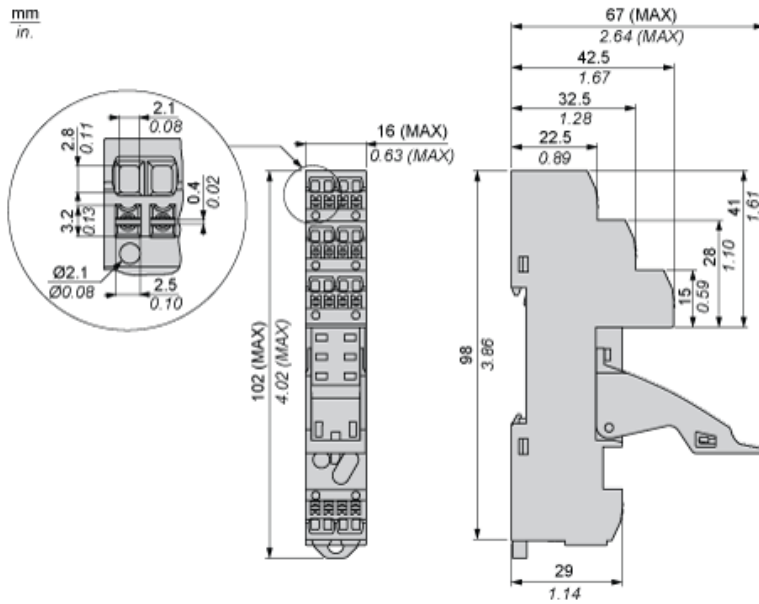
Standards	IEC 61984
Product certifications	CSA UL EAC
Marking	CE
IP degree of protection	IP20
Overvoltage category	III
Pollution degree	3

### Offer Sustainability

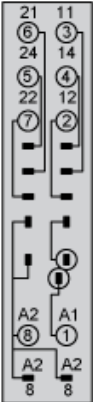
Sustainable offer status	Green Premium product
REACH Regulation	<a href="#">REACH Declaration</a>
REACH free of SVHC	Yes
EU RoHS Directive	Pro-active compliance (Product out of EU RoHS legal scope) <a href="#">EU RoHS Declaration</a>
Toxic heavy metal free	Yes
Mercury free	Yes
RoHS exemption information	<a href="#">Yes</a>
China RoHS Regulation	<a href="#">China RoHS declaration</a>
Environmental Disclosure	<a href="#">Product Environmental Profile</a>
WEEE	The product must be disposed on European Union markets following specific waste collection and never end up in rubbish bins

Dimensions

mm  
in.



Wiring



---

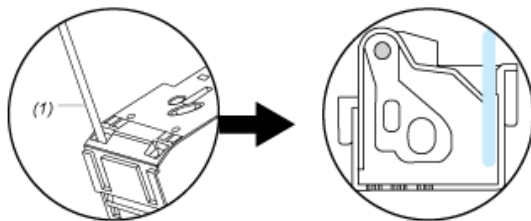
Installation

---



Installation

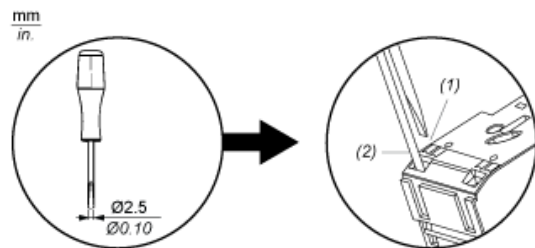
Push In (Insert Cable)



(1) : Insert Wire

Uninstallation

Pull Out (Remove Cable)



(1) : Press  
(2) : Pull Wire