

LaserLyte User Guide



1. PRODUCT OVERVIEW

Thank you for purchasing the LaserLyte alignment system. The system comprises of a robust industrial grade laser alignment module, mounting bracket, power supply and electrical lead. The system is ready to install in a wide variety of positioning applications.

If you have any problems or require help when using the LaserLyte system please call us on +44 (0)1495 212213 or contact your local representative.

2. PRODUCT OPERATION

- V RANGE

The LaserLyte system has been designed to be plug and play, to operate the system please follow the instructions below:

1. Connect the DC jack lead (as shown in diagram B) to the back of the laser module (as shown in diagram A)
2. Connect the other end of the lead into the PS-1 / PS-4 power supply
3. If you have more than one laser follow instruction 1 and 2 until all the lasers have been connected to the power supply. (You will need a PS-4 to power more than one LaserLyte laser.)

- GREENLYTE RANGE

The GreenLyte system has been designed to be plug and play, to operate the system please follow the instructions below:

1. Connect the DC jack lead to the back of the laser module
2. Connect the other end of the lead into the PS-1 power supply

Please note if you would like more than one GreenLyte system to be powered additional PS-1 power supplies must be purchased.

3. FOCUS ADJUSTMENT

- V RANGE

The focus of the laser can be adjusted by using the supplied focus key (as shown in diagram H). Should you need to adjust the focus please follow the simple instructions below:

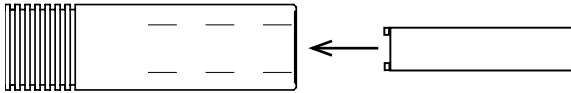
1. Insert focus key into focus hole on laser barrel (as shown in diagram C)
2. Turn until desired focus is achieved (if the key turns to maximum limit re-insert and continue to turn until focus is achieved)



- GREENLYTE RANGE

The focus of the laser can be adjusted by using the supplied focus key (as shown in diagram G). Should you need to adjust the focus please follow the simple instructions below:

1. If supplied with line or cross optics remove front unscrewable section
2. Insert focus key into laser barrel and align with focus control grooves
3. Turn until desired focus is achieved
4. Replace front unscrewable section if supplied.



4. MANIPULATING THE PATTERN

- V RANGE

A number of user adjustable patterns are available on the V range by turning the knob (as shown in diagram D). The RXL model will allow the user to adjust the angle of the cross, the VLL will adjust the length of the line and DVI adjusts the intensity of the dot.

- GREENLYTE RANGE

The line optics provided provides a fixed length line whereas the cross optics, the angle of the cross can be adjusted by following the instructions below:

1. Insert cross adjustment tool (J) into two center holes of cross optics
2. Turn until 90° cross is achieved

5. CLEANING THE OPTICS

If the laser pattern becomes fuzzy or unclear, please check the following:

1. Check the laser is in focus (see section 3)
2. Verify the optical lens is clean, if the area has been contaminated please remove dirt with dry air.

6. MOUNTING

- V RANGE

Two mounts are available for the V Range the MK1 (as shown in diagram F) or the Heavy duty mount (as shown in diagram I).

- GREENLYTE RANGE

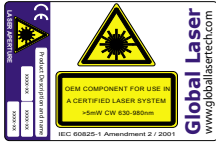
Mount the laser in the high quality industrial mount (as pictured diagram I) and adjust so that it firmly clamps the laser and prevents movement against shock and vibration.

7. SAFETY AND CLASSIFICATION

These modules are intended for incorporation into customer equipment. They are classified in accordance with IEC60825-1 Amendment 2/2001, which should be consulted prior to designing or using any laser product. The following labels are supplied for attachment to the customer's equipment, but responsibility for compliance with the standard remains with the user.



Technology Center, Cwmillery Industrial Estate, Abertillery Gwent. NP13 1LZ
T: +44 (0)1495 212213 F: +44 (0)1495 214004
E: sales@globallasertech.com W: www.globallasertech.com



OEM Laser Label



Class 2M Laser Label



Class 3R Laser Label

IEC 60825 Warning Labels (examples)

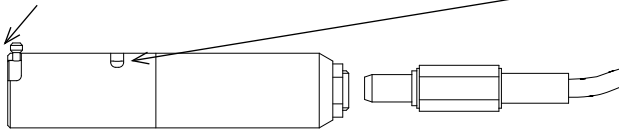
8. PRODUCT WARRANTY AND REPAIR

If your product develops a fault within 12 months from the date of purchase Global Laser will repair / replace the product. If you wish to return a faulty product contact your local representative or Global Laser to obtain a RMA (Return Material Authorisation code) and return to the address below:

9. DIAGRAMS

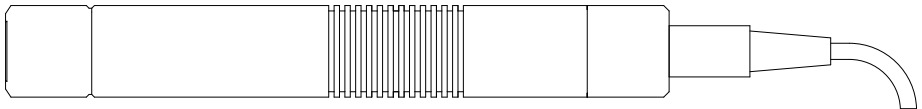
Adjustment Knob (D)

Focus key Hole (C)

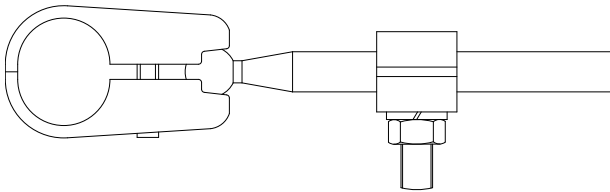


V Range (A)

DC lead (B)

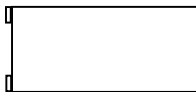


GreenLyte (E)

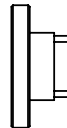


MK1 mounting kit (F)

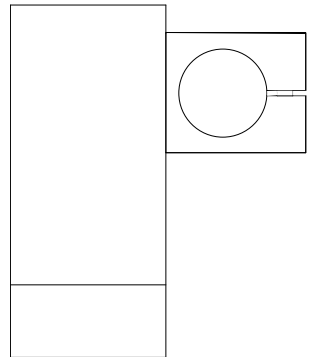
Focus Key for V Range (H)



Focus Key for Greenlyte (G)



GreenLyte cross adjustment tool (J)



Heavy duty mount (I)



Technology Center, Cwmtillery Industrial Estate, Abertillery Gwent. NP13 1LZ
 T: +44 (0)1495 212213 F: +44 (0)1495 214004
 E: sales@globallasertech.com W: www.globallasertech.com

NOTES