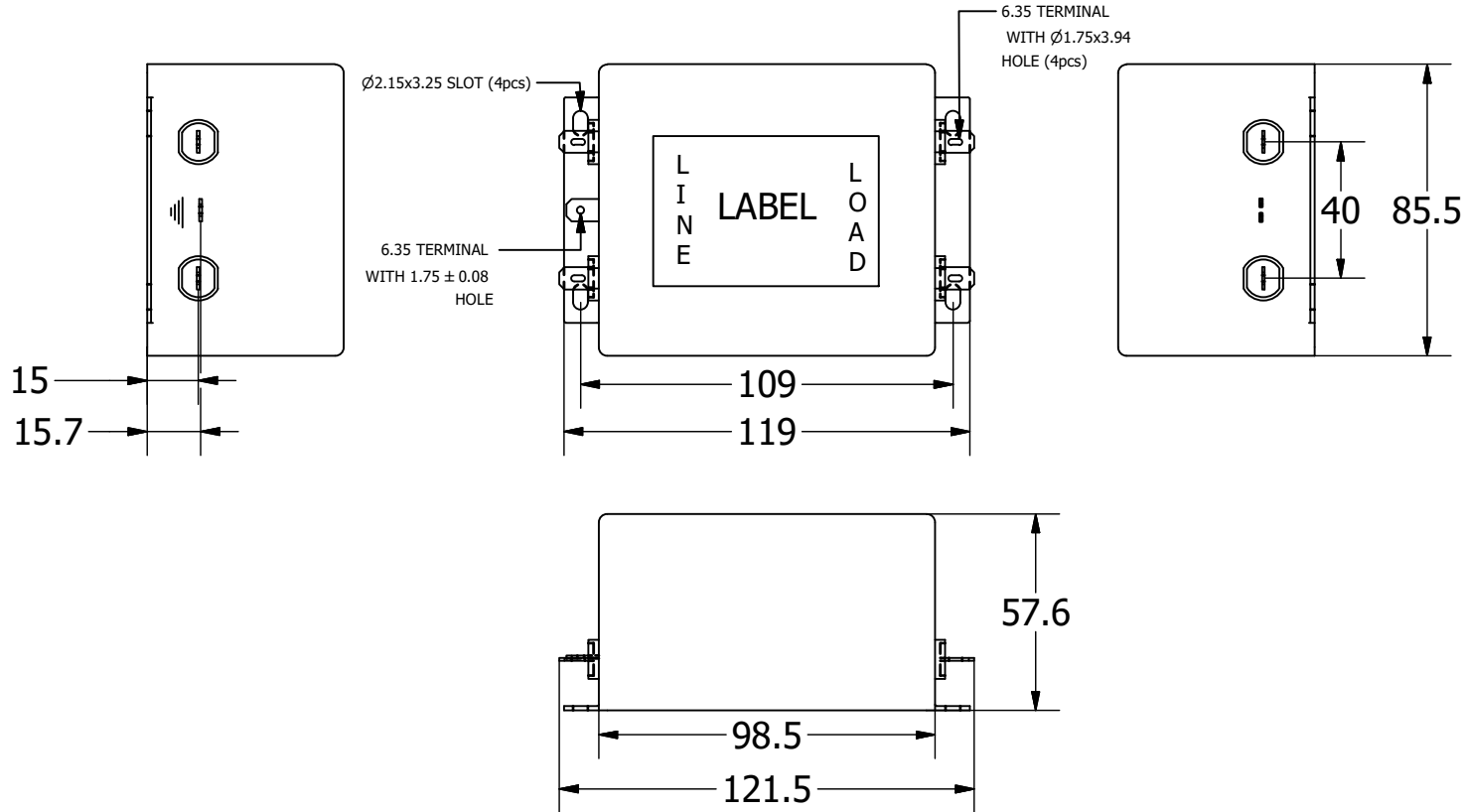


This DWG. is a sole property of ARROW POWER COMPONENTS PVT. LTD. unauthorised use of this DWG. or making product as per DWG. without our permission or any misuse is not permitted.

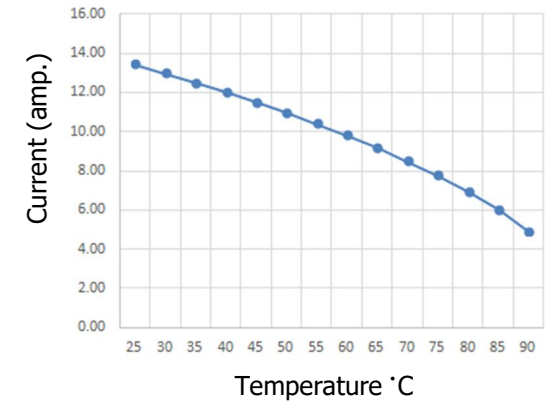
## Mechanical Details



## NOTES: UNLESS OTHERWISE SPECIFIED

1	TOLERANCE TO BE $\pm 1.0$ mm.
2	ALL DIMENSIONS ARE IN MM
3	

Derating curve



## PRODUCT LABEL

**EMC EMV**  
FILTER

EN2080-16-F  
120/250 VAC, 50/60 Hz  
16A@40°C  
25/100/21

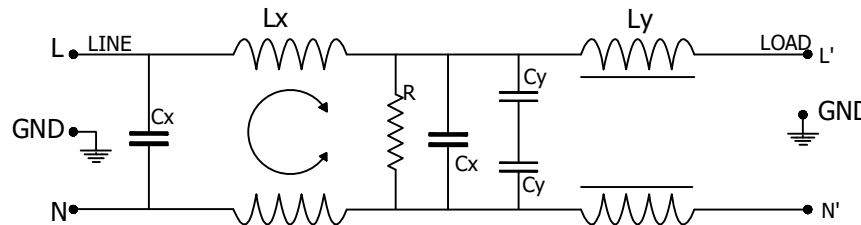
L  
I  
N  
E

L  
O  
A  
D

## SPECIFICATION

- 1) RATED VOLTAGE (MAX):  
12 AMP, 120/250 VAC 50-60HZ;
- 2) Hi-pot RATING (ONE MINUTE):  
LINE TO GROUND: 3000 VDC  
LINE TO LINE : 1100 VDC
- 3) MAXIMUM LEAKAGE LINE TO GROUND:  
0.43mA @120 VAC 60 Hz;  
0.74mA @250 VAC 50 Hz;
- 4) CLIMATE CLASS: 25/100/21  
TEMPERATURE RANGE: -25°C to +100°C  
OVERLOAD CURRENT: 1.5x Rated ct. for 1 min.

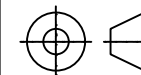
## Electrical Schematic



## 50 ohm - 50 ohm Typical Insertion Loss

FREQUENCY MHZ	0.01	0.1	0.5	1.0	2.0	5.0	10
COMMON DB	8	25	42	52	62	68	58
DIFFERENTIAL DB	10	40	82	75	63	48	41

THIRD ANGLE PROJECTION



A	ISSUE	ECN	SUJIT	AJAY	AUG.2019
REV.	DESCRIPTION		DWN	APVD.	APVD. DATE
<b>ARROW POWER COMPONENTS PVT. LTD.</b> A-40, Wazirpur Industrial Area New Delhi, 110052 Email:- aj@emcemv.com					
DRAWN BY	VERIFIED BY	APPROVED BY	CHECKED DATE		
SUJIT	RISHABH	AJAY	09-AUG-2019		
DESC. SINGLE PHASE SINGLE STAGE FILTER					PAGE 1 Of 1
SERIES	PART NO.				
EN2080	EN2080-16-F				