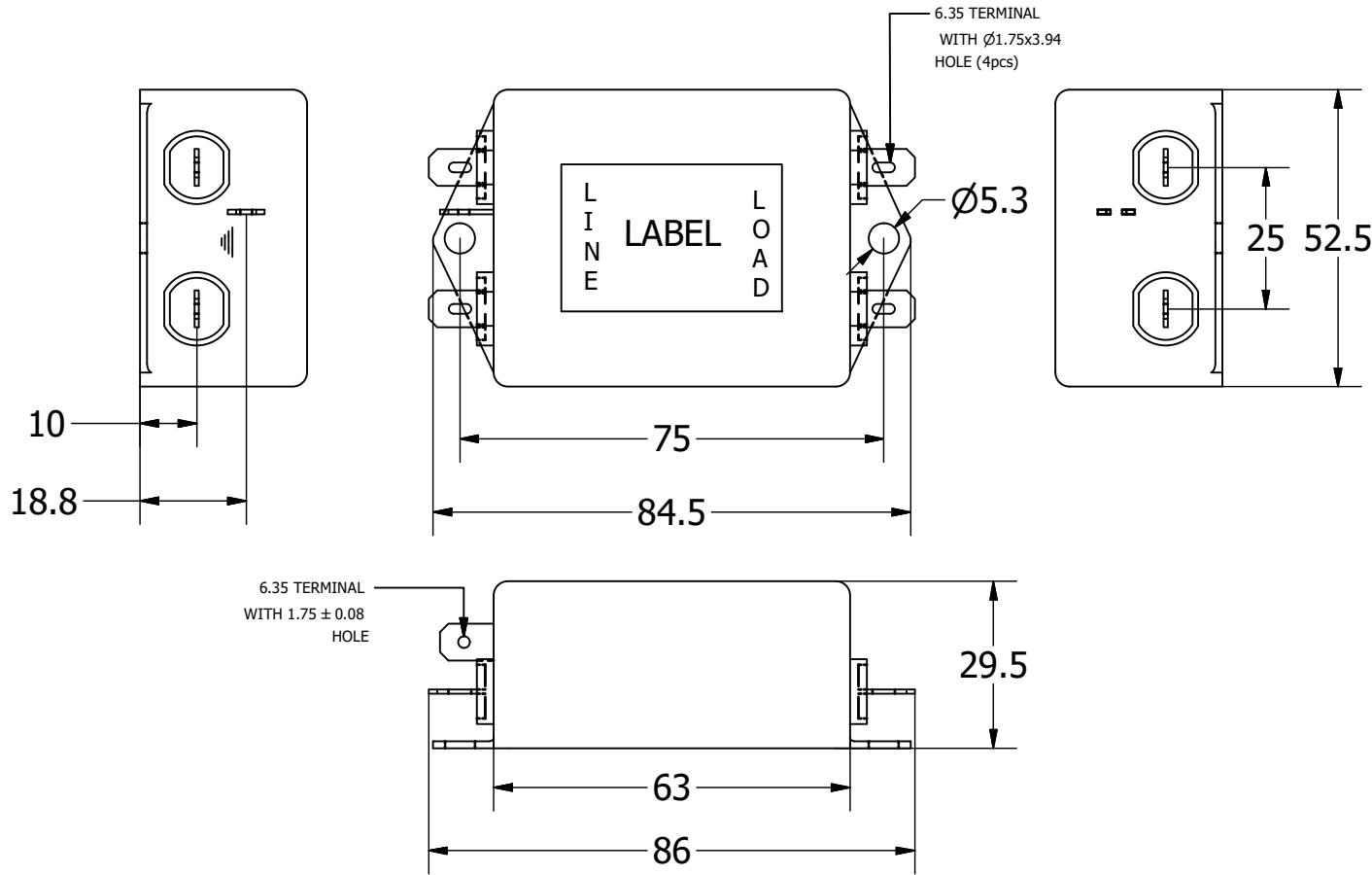


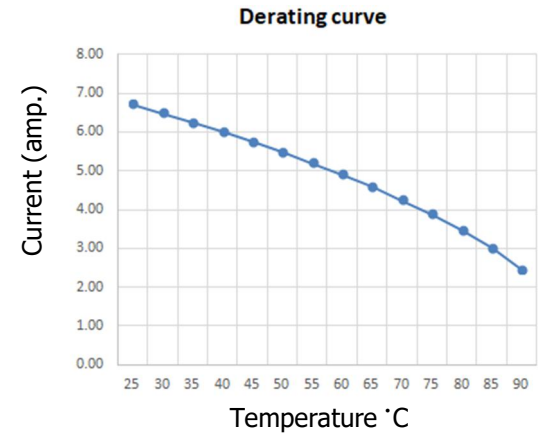
This DWG. is an sole property of ARROW POWER COMPONENTS PVT. LTD. unauthorised use of this DWG. or making product as per DWG. without our permission or any misuse is not permitted.

Mechanical Details

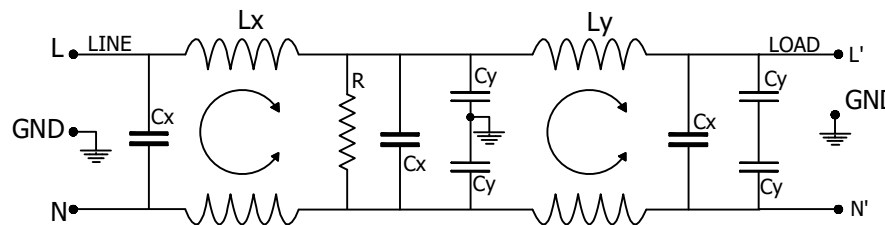


NOTES: UNLESS OTHERWISE SPECIFIED

| | |
|---|-------------------------------|
| 1 | TOLERANCE TO BE ± 1.0 mm. |
| 2 | ALL DIMENSIONS ARE IN MM |
| 3 | |



Electrical Schematic



SPECIFICATION

- 1) RATED VOLTAGE (MAX):
6 AMP, 120/250 VAC 50-60HZ;
- 2) Hi-pot RATING (ONE MINUTE):
LINE TO GROUND: 3000 VDC
LINE TO LINE : 1100 VDC
- 3) MAXIMUM LEAKAGE LINE TO GROUND:
0.39mA @120 VAC 60 Hz;
0.68mA @250 VAC 50 Hz;
- 4) CLIMATE CLASS: 25/100/21
TEMPRATURE RANGE: -25°C to +100°C
OVERLOAD CURRENT: 1.5x Rated ct. for 1 min.

50 ohm - 50 ohm Typical Insertion Loss

| FREQUENCY MHZ | 0.01 | 0.1 | 0.5 | 1.0 | 2.0 | 5.0 | 10 |
|-----------------|------|-----|-----|-----|-----|-----|----|
| COMMON DB | 19 | 59 | 95 | 85 | 88 | 65 | 51 |
| DIFFERENTIAL DB | 8 | 42 | 82 | 82 | 81 | 64 | 42 |

PRODUCT LABEL

EMC EMV
FILTER

LINE LOAD

EN2090-6-F
120/250 VAC, 50/60 Hz
6A@40°C
25/100/21

UL US CE

| A | ISSUE | SUJIT | AJAY | AUG. 2019 |
|--|-------------|-------------|--------------|-------------|
| REV. | DESCRIPTION | ECN | DWN | APVD. |
| ARROW POWER COMPONENTS PVT. LTD. A-40, Wazirpur Industrial Area New Delhi, 110052 Email:- aj@emcemv.com | | | | |
| DRAWN BY | VERIFIED BY | APPROVED BY | CHECKED DATE | |
| SUJIT | RISHABH | AJAY | 09-AUG-2019 | |
| DESC. SINGLE PHASE SINGLE STAGE FILTER | | | | PAGE 1 Of 1 |
| SERIES | PART NO. | | | |
| EN2090 | EN2090-6-F | | | |

