

Change Notice

JF Series

Changes to LED Specifications for JF Series Spot Illuminated Tactiles

Type of Change:

- Engineering Part Number
 Product Appearance

1. The LED specifications for JF Series spot illuminated tactile switches will be undergoing changes. This will result in revisions to the electrical values, and will apply to red, yellow and green LEDs for standard or custom switches. Following is the comparison between the specifications before and after the changes. Effected standard part numbers are on page 2.



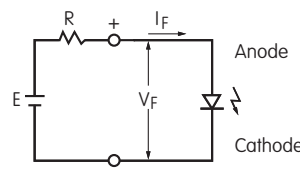
JF Series spot illuminated tactiles will have LED revisions.

CHANGES TO LED SPECIFICATIONS FOR JF SERIES SPOT ILLUMINATED TACTILES

LEDs are an integral part of the switch and are not available separately. Electrical specifications are determined at a basic temperature of 25°C.	Before Change			After Change		
	C Red	E Yellow	F Green	C Red	E Yellow	F Green
Color	Red	Yellow	Green	Red	Yellow	Green
Maximum Forward Current	I_{FM} 40mA	40mA	40mA	30mA	30mA	30mA
Typical Forward Current	I_F 30mA	30mA	30mA	20mA	20mA	20mA
Forward Voltage	V_F 1.7V	2.2V	2.2V	2.0V	1.9V	2.0V
	$I_F = 30mA$	$I_F = 30mA$	$I_F = 30mA$	$I_F = 20mA$	$I_F = 20mA$	$I_F = 20mA$
Maximum Reverse Voltage	V_{RM} 4V	4V	4V	5V	5V	5V
Current Reduction Rate Above 25°C	ΔI_F 0.67mA/°C	0.67mA/°C	0.67mA/°C	0.40mA/°C	0.40mA/°C	0.40mA/°C
Ambient Temperature Range	-25°C ~ +70°C			-25°C ~ +70°C		

Notes

- The LED circuit is isolated and requires an external power source.
- For best results and safe use of the LEDs, the supply voltage should be more than the LED forward voltage. In addition, an appropriately valued ballast resistor should be used. Without the ballast resistor, the LED will be damaged or destroyed. The resistor value can be calculated by using the formula shown here.
- There are no changes to the switches' external dimensions.
- Contact information is below if more details are needed.



$$R = \frac{E - V_F}{I_F}$$

Where: R = Resistor Value (Ohms)
 E = Source Voltage (V)
 V_F = Forward Voltage (V)
 I_F = Forward Current (A)

Effective Date

Changes to LED specifications for JF Series Spot Illuminated Tactiles will be effective April 2021.

NKK
SWITCHES

www.nkkswitches.com • 1.877.2BUYNKK (228.9655)

7850 East Gelding Drive • Scottsdale, AZ 85260 • Telephone 480.991.0942 • Fax 480.998.1435

Change Notice

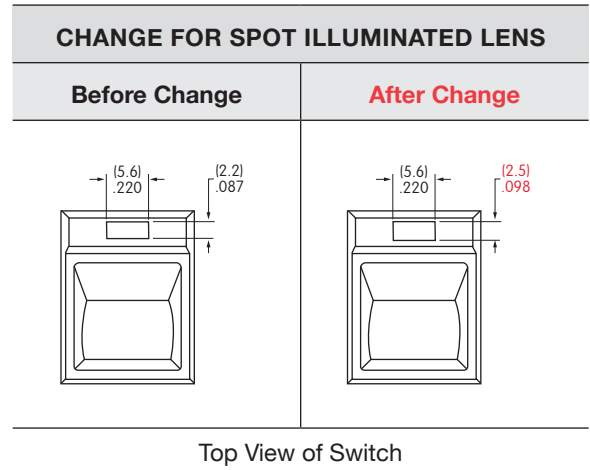
JF Series

Change to Dimension of JF Series Spot Illuminated Lens

Type of Change:

- Engineering Part Number
 Product Appearance

2. The JF Series spot illuminated switches will be having a change to the dimension of the lens for the spot illumination. The height of the lens will be changing from 2.2mm/.087" to 2.5mm/.098". This revision applies to all actuators with spot illumination: round, square and sculptured, and for both standard or custom switches. See the table below for effected standard part numbers.



Effected Standard Part Numbers				
JF15RP1CC	JF15RP1GC	JF15RP2DC	JF15RP2HC	JF15RP3FC
JF15RP1CE	JF15RP1GE	JF15RP2DE	JF15RP2HE	JF15RP3FE
JF15RP1CF	JF15RP1GF	JF15RP2DF	JF15RP2HF	JF15RP3FF
JF15RP1DC	JF15RP1HC	JF15RP2FC	JF15RP3CC	JF15RP3GC
JF15RP1DE	JF15RP1HE	JF15RP2FE	JF15RP3CE	JF15RP3GE
JF15RP1DF	JF15RP1HF	JF15RP2FF	JF15RP3CF	JF15RP3GF
JF15RP1FC	JF15RP2CC	JF15RP2GC	JF15RP3DC	JF15RP3HC
JF15RP1FE	JF15RP2CE	JF15RP2GE	JF15RP3DE	JF15RP3HE
JF15RP1FF	JF15RP2CF	JF15RP2GF	JF15RP3DF	JF15RP3HF

Effective Date

Change to the dimension of the JF Series spot illuminated lens will be effective April 2021.

NIKK
SWITCHES

www.nkkswitches.com • 1.877.2BUYNKK (228.9655)

7850 East Gelding Drive • Scottsdale, AZ 85260 • Telephone 480.991.0942 • Fax 480.998.1435