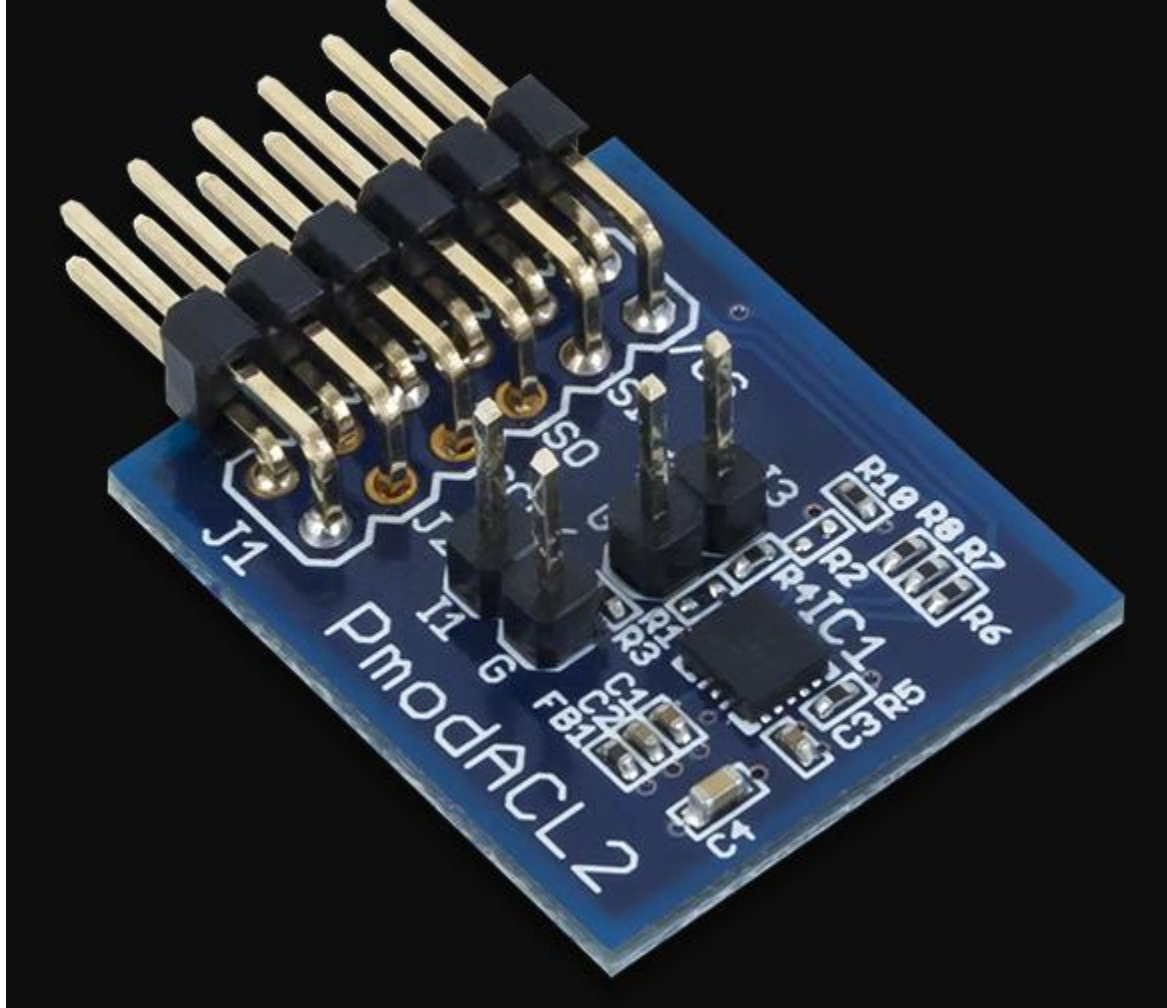


Pmod ACL2: 3-axis MEMS Accelerometer

410-255



Product Description

The Pmod ACL2 is a 3-axis MEMS accelerometer powered by the Analog Devices ADXL362. By communicating with the chip via the SPI protocol, users may receive up to 12 bits of resolution for each axis of acceleration. Additionally, this module offers freefall detection as well as power saving features through its motion activated sleep and wake modes.

Features:

- 3-axis MEMS accelerometer
- Up to 12 bits of resolution per axis
- User-selectable resolution
- Activity/inactivity monitoring



- Low current consumption at $<2 \mu\text{A}$ at 100Hz
- Free-fall detection
- Small PCB size for flexible designs 1.0 in \times 0.8 in (2.5 cm \times 2.0 cm)
- Follows Digilent Pmod Interface Specification Type 2A
- Library and example code available in the resource center

What's

Included:

- Pmod ACL2
 - Custom antistatic Pmod packaging
-