

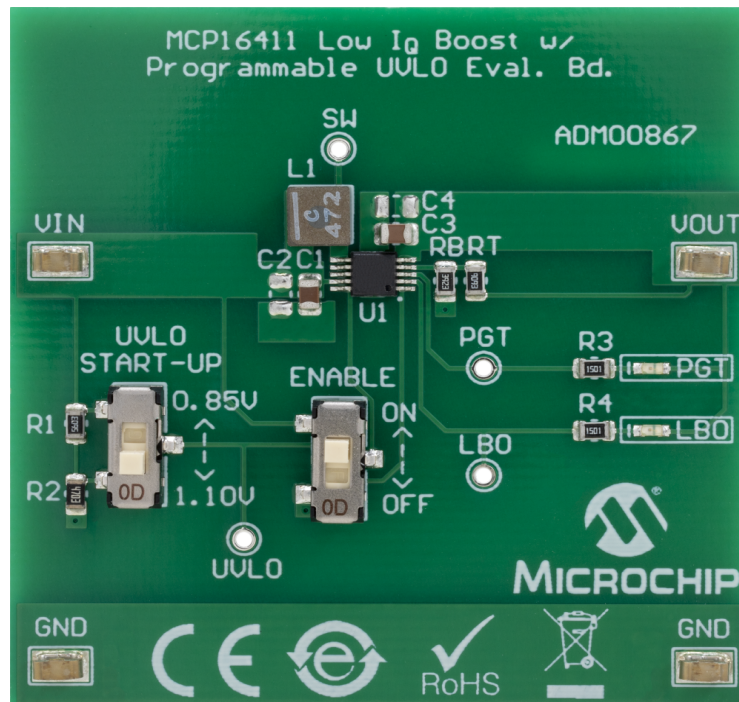
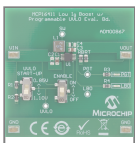
MCP16411 Low Voltage Boost Converter



Part Number: ADM00867

Summary:

The MCP1641X is a compact, high-efficiency, fixed frequency, low-voltage, synchronous step-up DC-DC converter with battery monitoring features. It provides an easy-to-use power supply solution for applications over a wide range of inputs: single-cell, two-cell, alkaline/NiMH batteries or single-cell Li-Ion/Li-Polymer batteries can be used. With the 1A Typical Peak Input Current Limit, MCP1641X can [View More](#)



Product Features

The MCP16411 Low IQ Boost with Programmable UVLO Evaluation Board has the following features:

- Input Voltage Range: 0.8V (after start-up) to 5.25V
- Typical 3.3V Output Voltage
- Output Current: 200 mA @ 3.3V VOUT with 1.5V VIN
- Enable state is selectable by using the ENABLE switch. When the EN pin is OFF, the MCP16411 will be in Output Discharge mode
- Automatic PFM/PWM Operation: - PFM for high efficiency at light loads
- Undervoltage Lockout (UVLO) is selectable by using the UVLO START-UP switch. The UVLO pin which is set to start-up at 0.85V (default value) and 1.1V (programmable value).
- Power Good indicator LED
- Low Battery Output indicator LED
- Internal Synchronous Rectifier
- Internal Compensation
- Inrush Current Limiting and Internal Soft Start
- Shutdown Current: 2.3 μ A Typically
- Low Noise, Anti-Ringing Control
- Thermal Shutdown
- Package: - 10-lead MSOP

