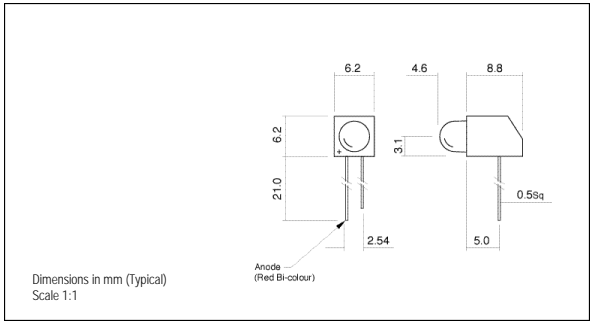


● PCB MOUNTING LEDs - Ø 5mm



- Extra-firm anchorage on PCB
- Customised lead lengths available
- Reverse polarity options



106 SERIES

MLQ = 250



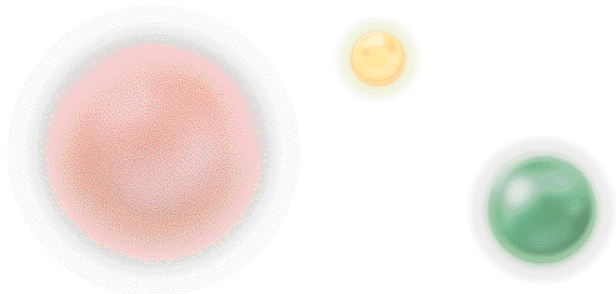
Ordering Information & Typical Technical Characteristics (Ta = 25°C)

Mean Time Between Failure = 100,000 Hours. Low Current Models 250,000 Hours. Luminous intensity figures refer to the unmodified discrete LED.

PART NUMBER	COLOUR	LENS	VOLTAGE DC Vopr	CURRENT DC Iopr	LUMINOUS INTENSITY Iv@20mA	WAVE LENGTH p	VIEWING ANGLE	OPERATING TEMP Topr	STORAGE TEMP Tstg
STANDARD INTENSITY									
106-505-01	Red	Coloured Diffused	2.0	2	15	625	Wide	-40 ~ +85	-40 ~ +85
106-511-01	Yellow		2.1	2	20	590			
106-514-01	Green		2.2	2	20	565			
106-505-04	Red		2.0*	20	15	625			
106-511-04	Yellow		2.1*	20	20	590			
106-514-04	Green		2.2*	20	20	565			
106-530-04	Red/Green	White Diffused	2.0/2.2*	20	30/20	625/565			
106-581-20	Red	Coloured Diffused	5	10	40@10mA	625			
106-582-20	Yellow		5	10	25@10mA	590			
106-583-20	Green		5	10	25@10mA	565			
UNITS			Vdc	mA	mcd	nm		°C	°C

* = Voltage DC for 20mA product is Vf@20mA, not Vopr

Making Light Work For You!
Making Light Work For You!
Making Light Work For You!
Making Light Work For You!



● SAMPLES AVAILABLE