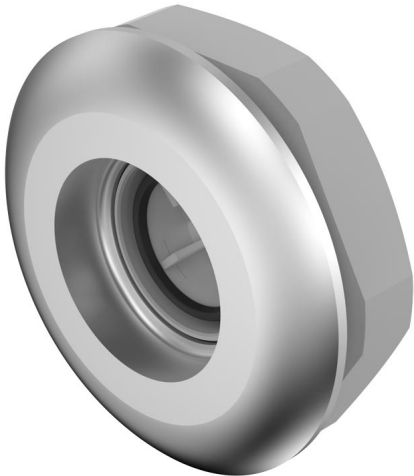


EAO – Your Expert Partner for Human Machine Interfaces

84-1221.7 - Illuminated pushbutton standard

84-1221.7 - Illuminated pushbutton standard



Attention: The preview is based on a sample product. This can differ from your current configuration.

Mounting

Mounting cut-out Ø 30,5 mm
Design flush

Front

Front dimension Ø 40 mm
Front shape round
Front bezel colour natural anodized
Front bezel material Aluminium

Other Attributes

Weight 0,022 kg

Operating-/Indication part

Lens illumination illuminative

IP-Rating

Front protection IP67

Actuator

Switching action Momentary
Housing colour natural anodized
Housing material Aluminium

Switching element

Switching system Short-travel element

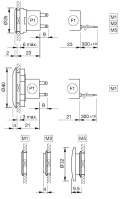
Function

Illuminated pushbutton

EAO – Your Expert Partner for Human Machine Interfaces

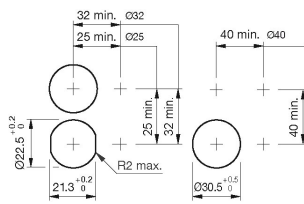
84-1221.7 - Illuminated pushbutton standard

Dimensions

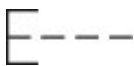


F1 = Flat ribbon cable

Mounting cut-outs



Wiring diagram



Additional information

Illuminated lens, non-illuminated bezel

The colour of anodized aluminium parts can vary due to technical production reasons

Legend

Switching action: B = Momentary