



# Portable 8 Channel Microphone Amplifier With Dante Network/ AES67 Audio Interface



Network Audio  
Mic Amplifier



**DARK8MAI MKII**  
Network Audio Multi Channel Microphone Amplifier

## Highlights

- Ideal For Broadcast, Theatre & Pro Audio
- 8 Low Noise Mic Pre-amplifiers
- Dante & AES67 Compatible
- Redundant Network Interface
- Network Remote Control & Configuration
- Redundant PoE Powering

## Overview

The DARK8MAI MKII (Microphone Analogue Input) is a very powerful Dante/ AES67 network audio interface, in a robust stage box/ throw down style. It has a 8 off low noise mic/line inputs which are remotely controlled by a Windows 10 app. The outputs of the microphone amplifiers are transmitted on a fully redundant Dante/ AES67 network interface.

Having 8 off low noise high quality microphone inputs makes the DARK8MAI perfect for transporting audio circuits from a stage or a pitch side position to a mixer or other location within an audio network.

The rugged design, PoE powering & remote control facility of the unit means that it can easily be placed and left unattended wherever audio sources are required.





Network Audio  
Mic Amplifier

- Eight Audio Inputs**  
The DARK8MAI MKII has 8 audio inputs. Each input is on it's own Neutrik 3 pin XLR socket and each input can be set to accept line or mic level inputs. Clever internal circuitry even changes the input impedance to correctly match the input type.
- Low Noise Mic Amps**  
The very best low noise & distortion microphone amplifiers chipsets by Profusion are used in our very carefully designed pre-amp. The design of the pre-amp took our chief design engineer over 3 months to develop and tailor to provide crystal clear sound unaltered by unwanted characteristics.
- Mic/Line/Phantom Power**  
Each of the eight inputs can be individually switched to accept either a mic or line level input. The mic input can also have 48 Volt phantom power turned on/ off. Input selection and phantom power settings are enabled on the Windows 10 app.
- Quality Analogue To Digital Converters**  
As well as the best microphone amplifiers the very best widest range analogue to digital converter's (ADC) currently available are used to make sure the digital audio on your network is as good as it possibly can be. The filter settings of the ADC can even be changed via the app.
- Windows 10 App For Remote Control**  
GlenController our free Windows 10 app provides full remote control of the Dark8MAI MKII. It allows switching of input types, gain control, level monitoring and more

**Dante™**  
AES67

**Features**

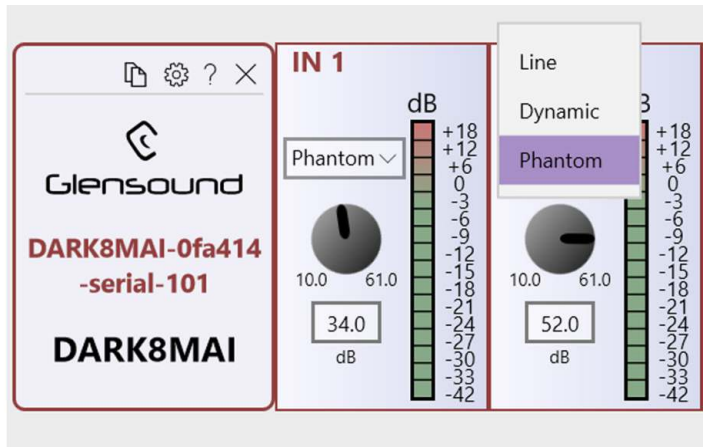
- Network Interface**  
 There are 4 network interfaces on the Dark8MAI MKII. There are 2 x Neutrik Ethercon (Rj45) connectors and there are also 2 x SFP slots for customers to fit their own preferred fiber interfaces.
- Redundant Network Interface**  
 When using the Dante protocol it is possible to set the Dark8MAIMKII to have a fully redundant network interface whereby a completely glitch free automatic redundant audio network link is provided across 2 off the network interfaces.

- Power**  
 Each Dark8MAI can be powered from two independent sources to provide a redundant power option. Each of the two copper network connections accept a PoE power source, allowing a suitable network switches to provide power and data connectivity to the unit. This means that just 1 cable can carry power and audio data to/from the unit. A local DC input is also provided to allow the device to be powered from an external DC source if no PoE power is available.
- Fixing Slots**  
 12 fixing slots are provided in the top and bottom aluminium plates. These can be used for temporary fixing the unit in place using cable ties or straps or they will accept screws if a more permanent fixing is required.



Network Audio  
Mic Amplifier

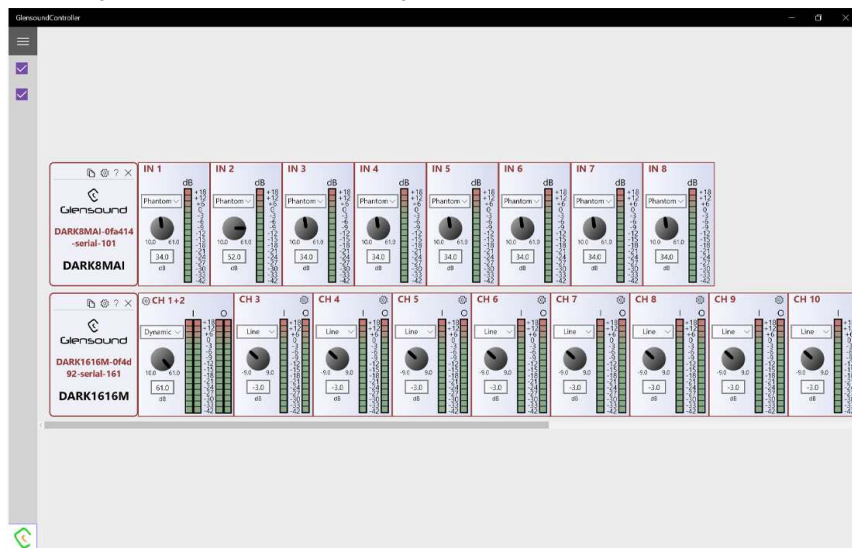
**Dante™**  
**AES67**



*GlenController gives full remote control of inputs, gain levels and configuration of any Dark units connected across a network.*

Network Audio  
Mic Amplifier

- Network Remote Control**  
GlenController is a Windows 10 PC application, and it can be downloaded for free from our website . When launched, GlenController scans the network for all compatible equipment and the device(s) that you want to control can be easily selected.
- Remote Control Of Mic Gain Levels**  
There are settings to select mic, mic +48v, or line inputs. A rotary control then acts as the gain level up and down. This all operates in real time.



- Redundant Remote Control**  
The App connects to the Dark8MAI MKII via the same network as the Dante audio circuits and provides a reliable redundant control system via both the primary and secondary network interfaces, meaning that even if one of the 2 networks were to become disconnected the remote control would continue to work.
- Multiple Apps**  
One App can connect to multiple DARK8MAI MKIIs and multiple Apps running on different PCs can connect to a single DARK8MAI MKII. The App provides the ability to lock out other users from controlling a Dark1616MAI MKII and this facility can be password protected, meaning only authorised personnel can change the settings on

# DARK8MAI MKII

## Designed For Broadcast & Audio Professionals

### Specification

#### LINE INPUTS

**Frequency Response**

+/-0.25dB 20Hz to 22kHz

**Maximum Input Level**

+18dB

**Input Impedance**

&gt;20k Ohm

**Distortion**

0.0013% @ 100Hz

0.0022% @ 1kHz

0.00094% @ 10kHz

Reference to +8dBu output

**Noise**

-93dB @ line up A weighted

RMS (22Hz to 22kHz)

**Interchannel Crosstalk**

&gt;101dB @ 0dB with 1kHz tone

**Dynamic Range**

&gt;111dB

**Input Type**

Electronically balanced (can be wired Unbalanced)

#### POWER

**PoE Inputs**

2 off standard 48V one on each network Rj45

**PoE Consumption**

Total unit consumption &lt;15 Watts

**External DC Input**

+12V DC Barrel connector Centre +Ve

#### INCLUDED ITEMS

**Network Cable**

1 off 2 metre Rj45 Cable

**Handbook**

A5 paper handbook (download also available)

#### REMOTE CONTROL

**General**

Windows 10 application. Direct install on PC. (Not App store download)

#### MIC INPUTS

**Frequency Response**

+/-0.25dB 40Hz to 22kHz

**Input Range**

-67 to -15dB (for -24dBfs line up)

-61 to -7dB (for -18dBfs line up)

**Input Gain Resolution**

3dB steps

**Input Impedance**

&gt;2k4 Ohm

**Equivalent Input Noise**

127dB (22Hz - 22kHz Terminated 300 Ohms)

**Distortion**

0.013% @ 100Hz, 0.002% @ 1kHz

0.003% @ 10kHz, Reference to +8dBu output

**Phantom Power**

+48 Volts

#### NETWORK/ Dante®

**Physical Interface**

2 off Rj45

2 off SFP slots

**Audio Sample Frequency**

32 to 192kS/s

**Transfer Rate**

1000 Mbps

**Dante™ Chipset**

Brooklyn II

Note: suitable for acting as master clock for a network incorporating many Ultimo chipsets

**AES67 Compliant**

AES67 compliant

#### PHYSICAL

**Size**

59 x 157 x 238mm (H x D x W)

**Weight**

1.2kg (2.6lb)

**Mechanics**

All aluminium construction, anodized and laser etched front &amp; rear panels

**Shipping Carton**Rugged export quality cardboard carton  
610 x 420 x 130mm LxDxH**Shipping Weight**

2.5kg

specification



Dante™  
AES67



Glensound

E &amp; OE