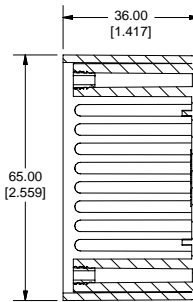
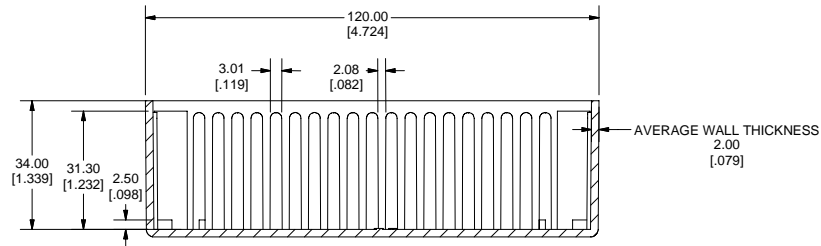


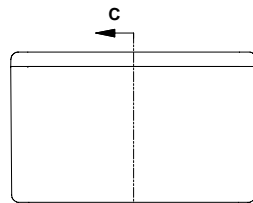
TOP VIEW OF BOX



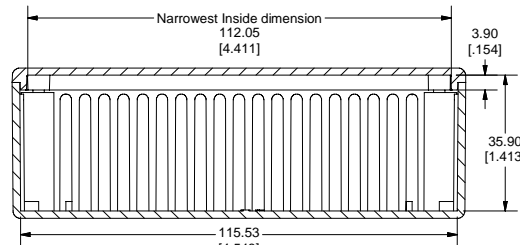
SECTION B-B



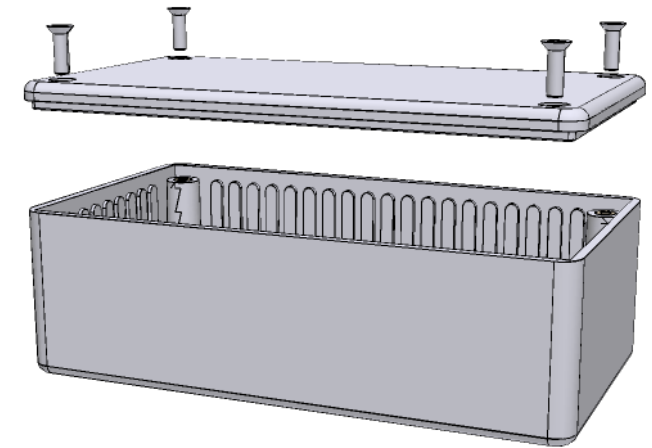
SECTION A-A



END VIEW OF ASSEMBLY

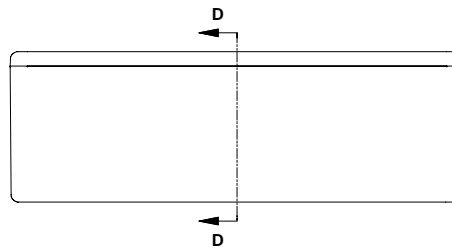
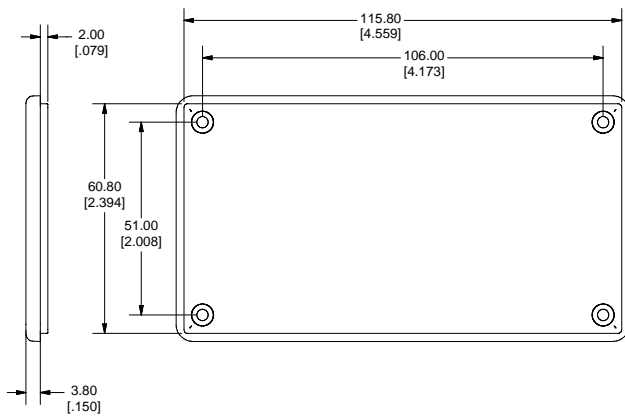


SECTION C-C



Note:

Enclosures can be Factory Modified (Milling, Drilling, Printing etc.)
 Contact Factory mjm@hammondmfg.com for quotes
 Solid models of this enclosure available in STEP or IGES Format.



SECTION D-D

PART NUMBERS		
1591C Flanged Box Enclosures		
Material	Colour	Part Number
FR ABS	Black RAL 9011	1591CF2BK
UL94 - V0	Grey RAL7018	1591CF2GY
GP ABS	Black RAL 9011	1591CF2SBK
UL94 - HB	Grey RAL7035	1591CF2SGY
Accessories		
Description	Part Number	
PC Board Card Adapters	See Accessories Section	
Universal Use	Clear Lids - clear, flame retardant polycarbonate - Lid ONLY	1591CC
FR ABS	Replacement Screws, Flat Head Phillips	1591MS100
	Nickel Plated Pkg of 100	1591MS100BK (Black)
GP ABS	Self Tapping Pkg of 100	1591TS100
		1591TS100BK (Black)
Recommended Torque on Fasteners (no lubrication)		
M3 - 0.5 x 10mm Screws	30-40 cN*m	
#4 x 0.5 Screws	30-40 cN*m	

