



Sensors > Pressure Sensors > Board Level Pressure Sensors

Proof Pressure Range: **10 bar**

Pressure: **2000 mbar**

Board Level Pressure Sensor Type: **Digital Pressure and Altimeter Sensor Modules**

Board Level Pressure Sensor Style: **Absolute**

Features

Product Type Features

Board Level Pressure Sensor Type	Digital Pressure and Altimeter Sensor Modules
Board Level Pressure Sensor Style	Absolute

Electrical Characteristics

Board Level Pressure Sensor Supply Voltage	1.5 – 3.6 V
--	-------------

Dimensions

Dimensions	3.3 x 3.3 x 2.75 mm [.13 x .13 x .108 in]
------------	---

Usage Conditions

Pressure	2 bar
Operating Temperature Range	-20 – 85 °C [-4 – 185 °F]

Operation/Application

Resolution	.016
Output Interface	I2C
Proof Pressure Range	10 bar
Pressure	2000 mbar
Output/Span	24 bit ADC
Board Level Pressure Sensor Accuracy	±0.5mbar

Packaging Features

Board Level Pressure Sensor Package	Surface Mountable
-------------------------------------	-------------------

Other

Options	High Endurance, Shielded
---------	--------------------------



Product Compliance

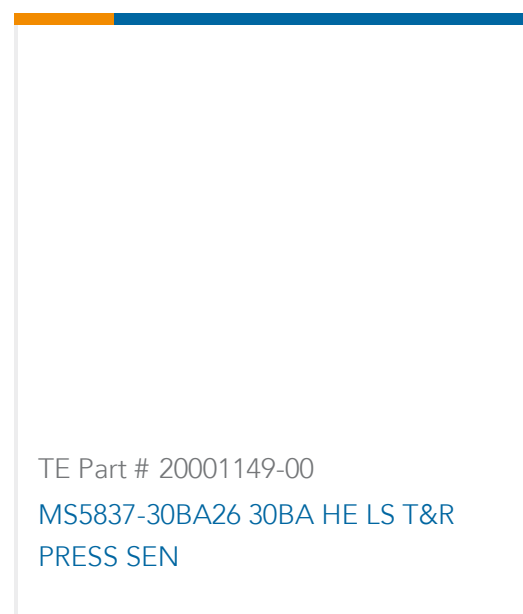
[For compliance documentation, visit the product page on TE.com>](#)

EU RoHS Directive 2011/65/EU	Not Yet Reviewed
EU ELV Directive 2000/53/EC	Not Yet Reviewed
China RoHS 2 Directive MIIT Order No 32, 2016	Not reviewed for China RoHS compliance
EU REACH Regulation (EC) No. 1907/2006	Current ECHA Candidate List: JUN 2020 (209) Not Yet Reviewed
Halogen Content	Not Yet Reviewed for halogen content
Solder Process Capability	Not reviewed for solder process capability

Product Compliance Disclaimer

This information is provided based on reasonable inquiry of our suppliers and represents our current actual knowledge based on the information they provided. This information is subject to change. The part numbers that TE has identified as EU RoHS compliant have a maximum concentration of 0.1% by weight in homogenous materials for lead, hexavalent chromium, mercury, PBB, PBDE, DBP, BBP, DEHP, DIBP, and 0.01% for cadmium, or qualify for an exemption to these limits as defined in the Annexes of Directive 2011/65/EU (RoHS2). Finished electrical and electronic equipment products will be CE marked as required by Directive 2011/65/EU. Components may not be CE marked. Additionally, the part numbers that TE has identified as EU ELV compliant have a maximum concentration of 0.1% by weight in homogenous materials for lead, hexavalent chromium, and mercury, and 0.01% for cadmium, or qualify for an exemption to these limits as defined in the Annexes of Directive 2000/53/EC (ELV). Regarding the REACH Regulations, TE's information on SVHC in articles for this part number is still based on the European Chemical Agency (ECHA) 'Guidance on requirements for substances in articles' (Version: 2, April 2011), applying the 0.1% weight on weight concentration threshold at the finished product level. TE is aware of the European Court of Justice ruling of September 10th, 2015 also known as O5A (Once An Article Always An Article) stating that, in case of 'complex object', the threshold for a SVHC must be applied to both the product as a whole and simultaneously to each of the articles forming part of its composition. TE has evaluated this ruling based on the new ECHA "Guidance on requirements for substances in articles" (June 2017, version 4.0) and will be updating its statements accordingly.

Compatible Parts



Also in the Series | [MEAS MS5837](#)

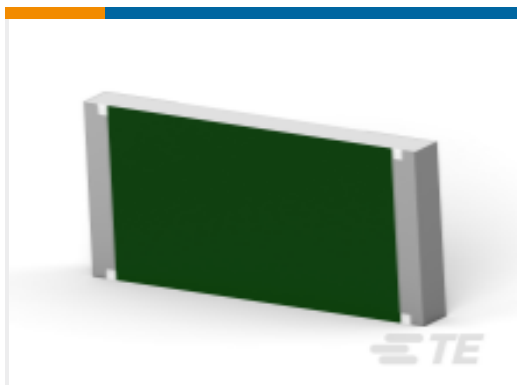
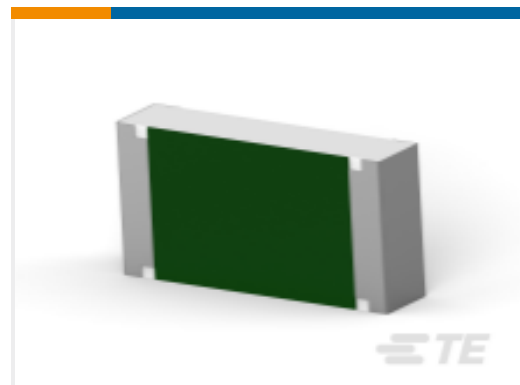
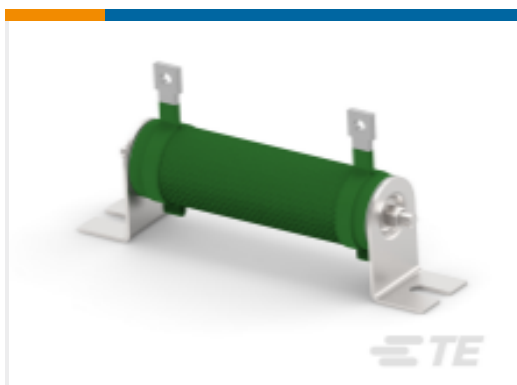
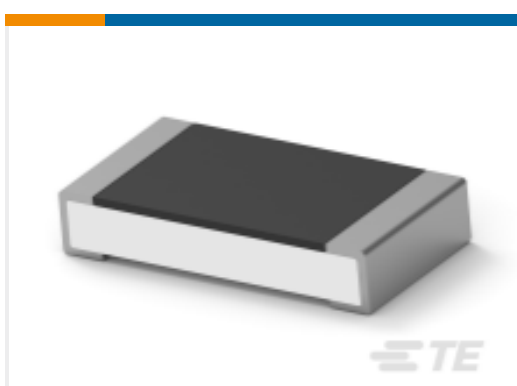
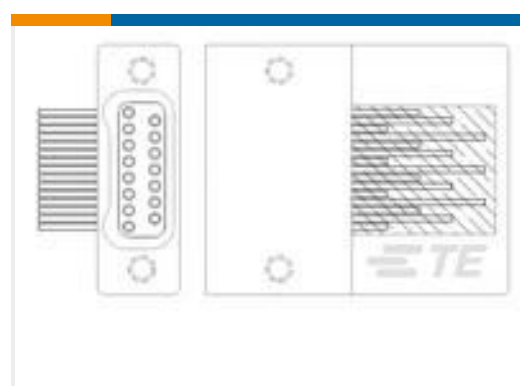


Board Level Pressure Sensors(8)



Digital Component Sensors(3)

Customers Also Bought

TE Part #9-2176404-0
3550 39R 5%TE Part #3-2176398-5
3502 360K 1%TE Part #4-647117-0
10P MTA100 HDR HT FL 30AU LFTE Part #5557804-1
MJ ASSY,8POS,R/A,KEYEDTE Part #1879453-4
Wirewound Resistor: Mineral, 2.5 KwTE Part #2198234-1
SFP+ Enhanced 1x4, PCI Heatsink, LPTE Part #5646959-1
UPM EXPANDED PIN ASSEMBLYTE Part #5-862545-6
LEAD, SGL END ASSY, LGHTE Part #2176387-1
RQ 1206 133K 0.1% 10PPM 1K RLTE Part #8-1589487-0
STL051M6AN = THRU-HOLE

Documents

CAD Files

[3D PDF](#)

[3D](#)

Customer View Model

[ENG_CVM_CVM_20005303-00_1.2d_dxf.zip](#)

English

Customer View Model

[ENG_CVM_CVM_20005303-00_1.3d_igs.zip](#)



English

Customer View Model

[ENG_CVM_CVM_20005303-00_1.3d_stp.zip](#)

English

By downloading the CAD file I accept and agree to the [Terms and Conditions](#) of use.

Datasheets & Catalog Pages

[MS5839-02BA](#)

English

Product Specifications

[Application Specification](#)

English