

Two Post Mounting Adjustable Shelf *DNRMA Series*

275 lbs (125 kg) Weight Capacity

Features

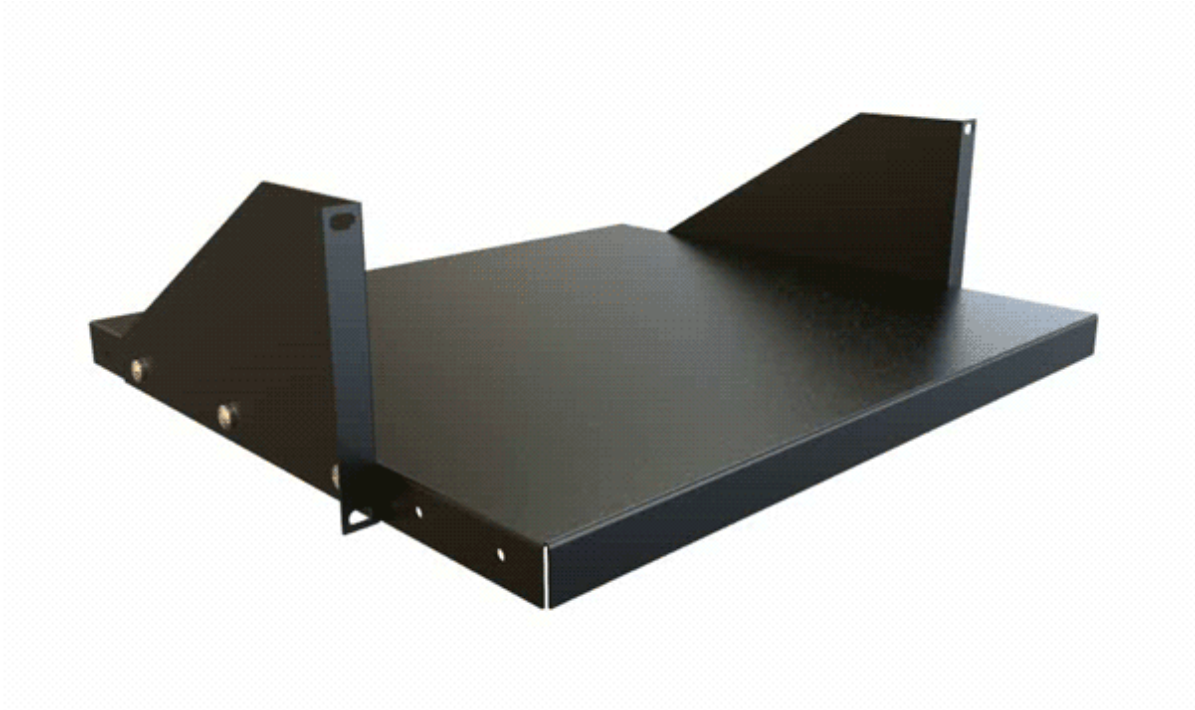


- 14 Gauge steel construction.
- Movable side brackets allow mounting inside or outside rack at 4 different depths
- Designed mainly for open relay racks - works panel mounted on any rack
- Choice of 16" or 20" deep.
- Available in either 19" rack panel width
- Finished in rugged textured - black powder paint
- Knockdown design ships unassembled for easy handling and shipping protection.
- Tested to nearly double the suggested load rating of 275 lbs (125 kg).
- TAA Compliant
- RoHS and REACH compliant.
- Manufactured in North America.



Accessories

- Mounting Hardware



Part No.	Width	Depth	Units	Height
DNRMA1916BK1	19.00	16.00	3U	5.25
DNRMA1920BK1	19.00	20.00	3U	5.25
DNRMA2316BK1	23.00	16.00	3U	5.25
DNRMA2320BK1	23.00	20.00	3U	5.25

Data subject to change without notice

© 2021. Hammond Manufacturing Ltd. All rights reserved.