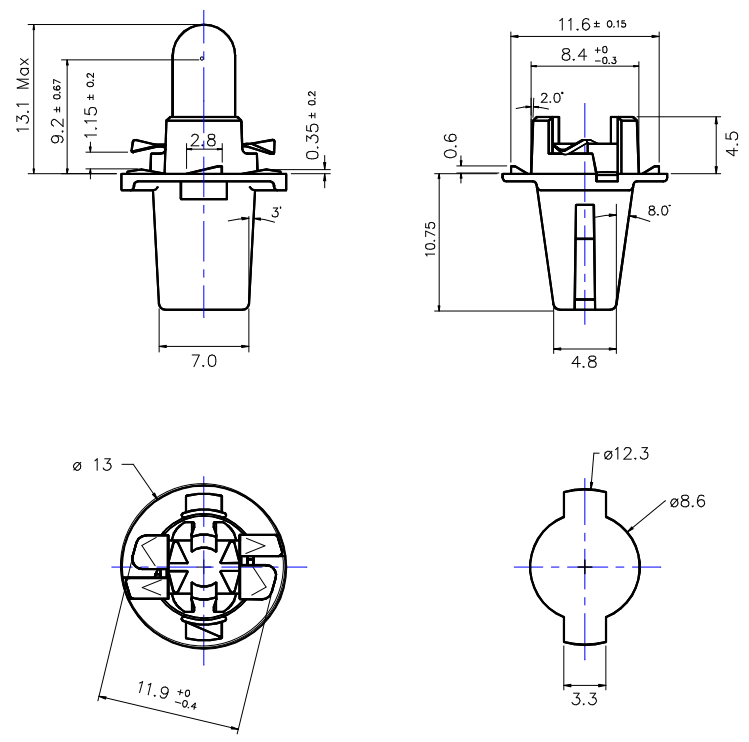


Part Number: 7111313

Type	Size	Rating	Description
Incandescent	T5	12V 1.28W	Lamp in socket



TEST VOLTS	CURRENT (mA)			LIGHT OUTPUT (Lm)			LIFE Hours
	Min.	Nom.	Max.	Min.	Nom.	Max.	
13.5	86	95	104	6.0	7.0	8.0	6,200 (B _{63.2})

Notes:

- 1 **Socket Type** T5 Twistlock Black Nylon PA66 GF 15
- 2 **Contacts** 1.15mm Gap Double Face Contact
AC 03/01:19 XC68RSKP steel
Tin plated
- 3 **Environmental** RoHS & REACH SVHC compliant
- 4 **General** Light output applicable to lamp without socket