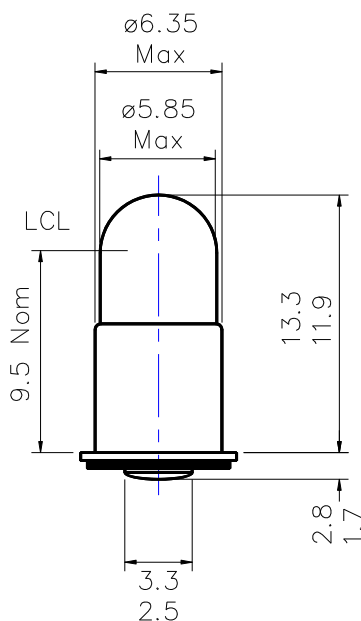


Part Number: 725

Type	Size	Rating	Description
Incandescent	T6	12V 100mA	T-1¾ Midget Flange Lamp



Dimensions in millimetres

TEST VOLTS	CURRENT (mA)			LIGHT OUTPUT (Lm)			LIFE Hours
	Min.	Nom.	Max.	Min.	Nom.	Max.	
12	90	100	110	3.7	5.0	6.3	5,000

Notes:

- 1 **Base Type** Nickel plated SX6s base to BS EN 60061-1
- 2 **Filament Shape** C-2V or C-2F
- 3 **General** Bulb and base shell shall enter a hole 13.5mm min. deep & 6.375±0.005mm dia.
- 4 **Lamp Marking** CML725 12V100mA or 12V 100mA engraved or durable ink stamped on base shell
- 5 **Environmental** RoHS & REACH SVHC compliant