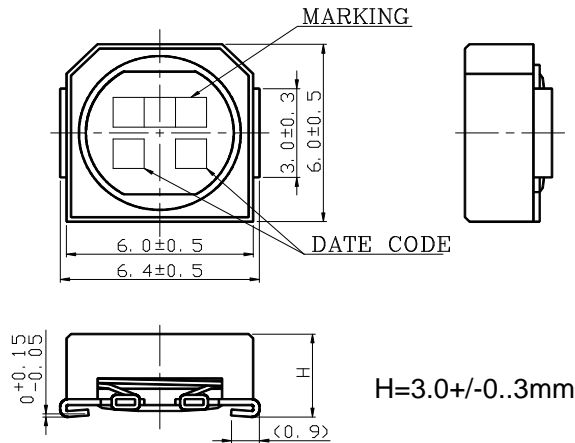
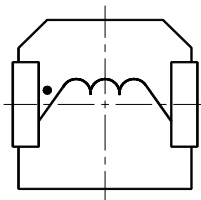


Shielded SMD choke coil ELL6SH type

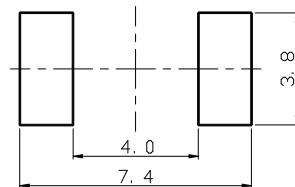
Appearance & Dimensions(Unit:mm)



Connections(Top view)



Recommended land patterns



Characteristics (Reference)

Part Number	Inductance Tol. +/-20%	DCR Tol.+/-20%	Rated Current	Marking
ELL6SH1R0M	1.0uH	0.019 ohm	3400mA	1R0
ELL6SH1R5M	1.5	0.024	3200	1R5
ELL6SH2R0M	2.0	0.026	2600	2R0
ELL6SH2R7M	2.7	0.031	2400	2R7
ELL6SH3R3M	3.3	0.034	2200	3R3
ELL6SH4R7M	4.7	0.042	2000	4R7
ELL6SH5R6M	5.6	0.049	1800	5R6
ELL6SH6R8M	6.8	0.052	1500	6R8
ELL6SH8R2M	8.2	0.061	1400	8R2
ELL6SH100M	10	0.065	1300	100
ELL6SH120M	12	0.071	1200	120
ELL6SH150M	15	0.096	1100	150
ELL6SH180M	18	0.13	1000	180
ELL6SH220M	22	0.14	900	220
ELL6SH270M	27	0.16	800	270
ELL6SH330M	33	0.18	700	330
ELL6SH390M	39	0.24	650	390
ELL6SH470M	47	0.27	600	470
ELL6SH560M	56	0.29	550	560
ELL6SH680M	68	0.52	500	680
ELL6SH820M	82	0.60	450	820
ELL6SH101M	100	0.68	400	101
ELL6SH121M	120	0.75	370	121
ELL6SH151M	150	0.86	350	151
ELL6SH181M	180	1.30	300	181
ELL6SH221M	220	1.40	280	221
ELL6SH271M	270	2.40	260	271
ELL6SH331M	330	2.70	240	331
ELL6SH391M	390	2.80	210	391
ELL6SH471M	470	3.20	200	471
ELL6SH561M	560	3.70	180	561
ELL6SH681M	680	4.30	160	681

*Rated current: This indicates the value of current when the inductance is 80% more than nominal value and temperature rising $dt=45$ degree C lower at D.C superposition.(at 20 degree C)