

## Dial Indicator, Lug Back

10mm, 0,01mm

Item number: 2046S



### Description

#### Standard Type, 10 mm Range, 0,01 mm Graduation

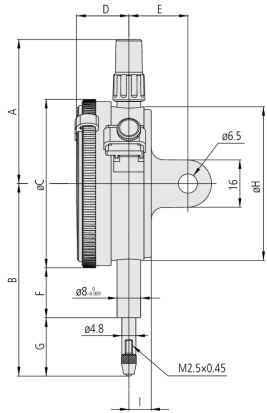
This is a standard, metric dial indicator. It offers you the following benefits:

- Bezel clamp and lifting lever (optional) can be attached to either right or left side. They can be easily installed and removed without tools.
- No through screw holes on the frame and secure adhesion between the bezel and the crystal as well as the use of an O-ring prevents water or oil penetration.

### Specification

Graduation:	<b>0,01 mm</b>
Scale:	<b>0-100 (100-0)</b>
Inch-Metric:	<b>Metric</b>
Range:	<b>10 mm</b>
Range per rev.:	<b>1 mm</b>
Graduation:	<b>0.01 mm</b>
MPE any 1/10 revolution:	<b>5 µm</b>
MPE any 1/2 revolution:	<b>9 µm</b>
Type:	<b>EN ISO Standard</b>
Mass:	<b>144 g</b>
C:	<b>57 mm</b>
D:	<b>17.7 mm</b>
E:	<b>20 mm</b>
G:	<b>19.8 mm</b>
Stem:	<b>8 mm</b>
Contact point:	<b>Carbide tipped, thread: M 2.5 x 0.45 mm</b>
Delivered:	<b>with certificate of inspection, limit indicators</b>
Continuous dial:	<b>Yes</b>
MPE any 1 revolution:	<b>10 µm</b>
Range:	<b>13 µm</b>
Digital/Analog:	<b>Analog</b>
H MPE (Hysteresis):	<b>3 µm</b>
R MPE (Repeatability):	<b>3 µm</b>

### Dimensions



F: 16.9 mm

I: 7.6 mm

## Spare parts

### Consumable spares:



**Contact Element Ball Point**  
**7,3mm Length, Carbide, Metric**  
**901312**



**Contact Element Ball Point**  
**8,3mm Length, Waterproof Type, Metric**  
**902119**



**NBR Rubber Boot**  
**for ID-B, IP64 Series 2**  
**125317**