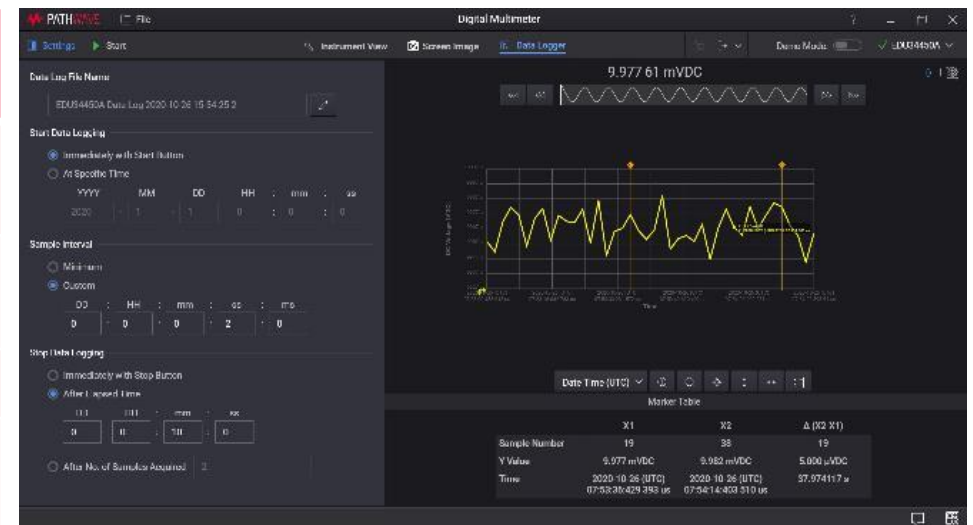


# PathWave BenchVue Standalone Software Applications

TO BE RELEASED MARCH 8, 2021

- ❑ Latest 2021 upgrades to your favorite PathWave BenchVue applications.
  - PathWave BenchVue Digital Multimeter App – BV0001B
  - PathWave BenchVue Function Generator App – BV0002B
  - PathWave BenchVue Power Supply App – BV0003B
  - PathWave BenchVue Oscilloscope App – BV0004B
- ❑ Run stand-alone with the latest UX designs for better navigation and intuitive connectivity, instrument control, and data capture.
- ❑ FAQs available in Gateway.

	New standalone PathWave apps (PS, DMM, FG, Scope)	Existing BenchVue Platform apps
Supported instruments	All (includes new EDU Series)	All except new EDU Series
Apps installation and launching	Launch from desktop	Launch BenchVue platform, then launch the app within platform
Features and UI	Same features, more responsive UI	
Customer benefits	Smaller package, better navigation, intuitive	Availability of more apps on the platform



# PathWave BenchVue Standalone App FAQ

- ❑ What are the differences between the PathWave BenchVue standalone app vs BenchVue Platform app?
  - Only four standalone apps available for now. New products and new capabilities will only be supported on standalone app in the future.
- ❑ Is PathWave BenchVue standalone software app free?
  - No. A license is required to use the standalone app. However, essential code license (node-lock) is included with eligible instruments purchase from June 1, 2019.
- ❑ How do I know which instruments are entitled to essential code license?
  - Go to [www.keysight.com/find/IncludedBenchVue](http://www.keysight.com/find/IncludedBenchVue)
- ❑ I have just purchased a Keysight EDU34450A DMM. How do I activate the included essential code license?
  - Activate your software directly through PathWave BenchVue standalone app or an online form at [activation.software.keysight.com](http://activation.software.keysight.com)
- Where can I download the standalone PathWave BenchVue app?
  - Go to [www.keysight.com/find/BenchVue](http://www.keysight.com/find/BenchVue) Look for corresponding instrument app. Click on “Get Latest Version”.
- ❑ Does Keysight plan to release more standalone PathWave BenchVue app in the future?
  - Depending on the needs, Keysight may release more standalone PathWave BenchVue app in the future.
- ❑ How will the standalone Pathwave BenchVue app affect existing installed base user that has already purchased BenchVue Platform app and using it on existing products (those are such as DMM 34465A, FG 33622A, etc)?
  - Existing BenchVue users may continue to use BenchVue Platform software app.
- ❑ Will the BenchVue Platform app continue to be made available?
  - Yes.

# PathWave BenchVue Standalone App FAQ

- ❑ Do I need to install the BenchVue Platform software for these apps to work?
  - Installation of BenchVue Platform software is NOT required for these standalone apps to work.
- ❑ I have a BenchVue license, can I use these new versions?
  - Users with existing licenses with current support subscriptions will be able to upgrade to this new version.
- ❑ What are the model numbers for this software?
  - These are the latest updates to 4 of the most popular PathWave BenchVue applications. Model numbers and ordering options do not change:
    - PathWave BenchVue Digital Multimeter App – BV0001B
    - PathWave BenchVue Function Generator App – BV0002B
    - PathWave BenchVue Power Supply App – BV0003B
    - PathWave BenchVue Oscilloscope App – BV0004B
- ❑ What's the difference between PathWave BenchVue and BenchVue? Are these 4 applications PathWave BenchVue?
  - The whole BenchVue suite of applications was renamed to PathWave BenchVue in 2019. These new applications are simply the latest version v. 2021 and are not a different suite of software.
- ❑ Can I install older versions of applications with the latest?
  - Users that prefer the legacy version of the PathWave BenchVue apps can co-install v. 2021 with older versions. This will allow users to choose what version to use that will meet their needs.
- ❑ Will you update the older versions of PathWave BenchVue apps?
  - Feature updates will be implemented in the newest versions of the apps. For example, new supported instruments are only supported in the release that first supported them. Keysight does not retroactively add features to older releases. Defect fixes can be released for older versions.