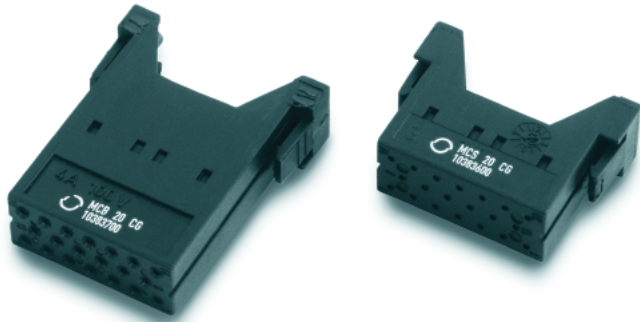


# EPIC® Rectangular Connectors



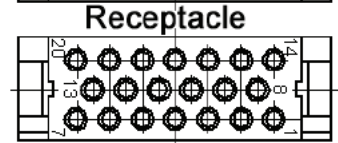
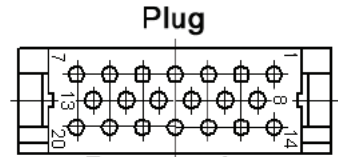
MC Series Plugs & Receptacles

## 20 CONTACT MODULES

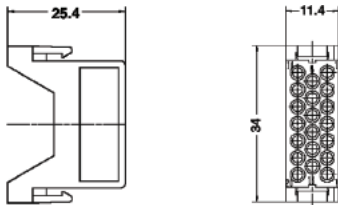


**Rated Voltage:**  
100V

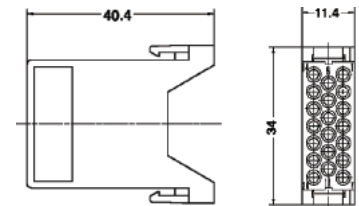
**Rated Current:**  
4A



Plug



Receptacle



Plug	Receptacle
10383600	10383700

Contacts Sold Separately

## STAMPED & FORMED CONTACTS: DIAMETER 1.0 MM

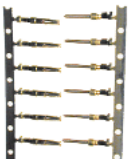


Reel of 500				
mm <sup>2</sup>	AWG	Gold		Stripping Length
		Pin	Socket	
.08 - 0.2	28 - 26	44429013	44429009	2.5 - 0.5
0.2 - .52	26 - 20	44429014	44429010	2.5 - 0.5

Reel feeds from the left

\* This conversion to AWG is approximate.

## THERMOCOUPLE CONTACTS



mm <sup>2</sup>	AWG	Strip of 25				Material	Polarity	Color Code	Stripping Length
		Type K		Type J					
		Pin	Socket	Pin	Socket				
0.25 - .52	24-20	TC-CH-P	TC-CH-S	-	-	Chromel	+	White	2.5 - 0.5
		-	-	TC-IR-P	TC-IR-S	Iron	+	Black	2.5 - 0.5
		TC-AL-P	TC-AL-S	-	-	Alumel	-	Green	2.5 - 0.5
		-	-	TC-CO-P	TC-CO-S	Constantan	-	Yellow	2.5 - 0.5

## TOOLS



Crimp Tool  
11158400



Removal Tool  
11132500