

ENLARGEMENT – INSPECTION & USE OF MICROSCOPIC PIECES

The video microscope VISUTEC may be used for several applications
Can be connected to a PC, monitor, video-projector...

New

POWERFULL

Enlargement x2 to x 30 on a 15" screen
Rotation on 320°

A picture acquisition software, with a USB2 conversion box, is available in option. Several types of screen are proposed.

MULTI PURPOSE

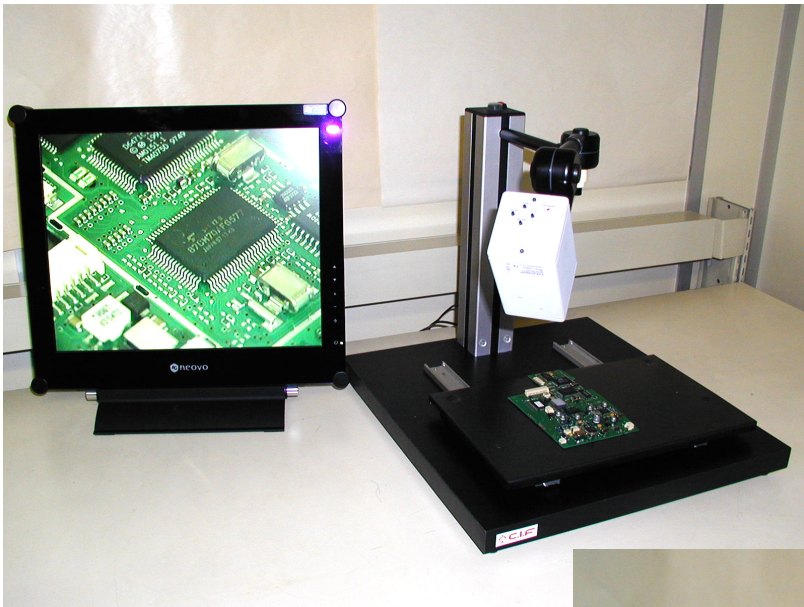
Several applications are possible and you can connect it to a PC, a monitor or a video-projector ...

INNOVATING

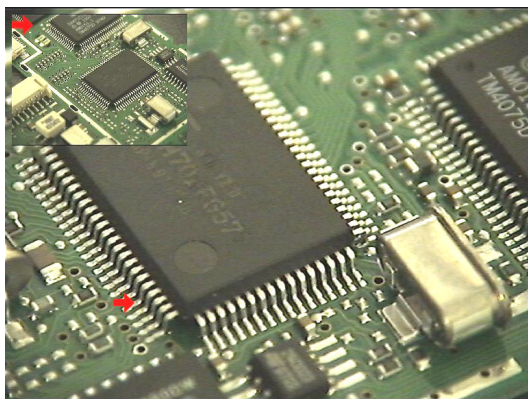
The camera is positioned +/- 45° with a rotation on 320°.
Easy spotting by laser pointer.

ERGONOMIC

Accessible functions : zoom +/-, focus +/- manual & automatic, moving table on X and Y axes



VISUTEC with 17" screen



Can integrate up to 9 pictures, a text area and marking arrows

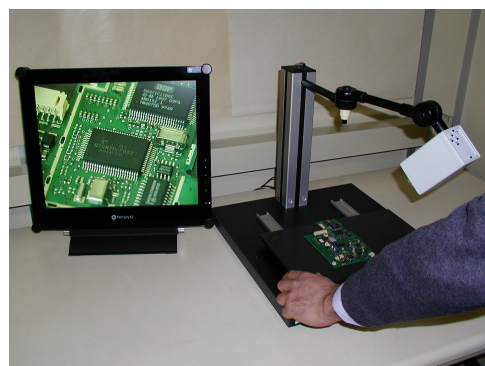


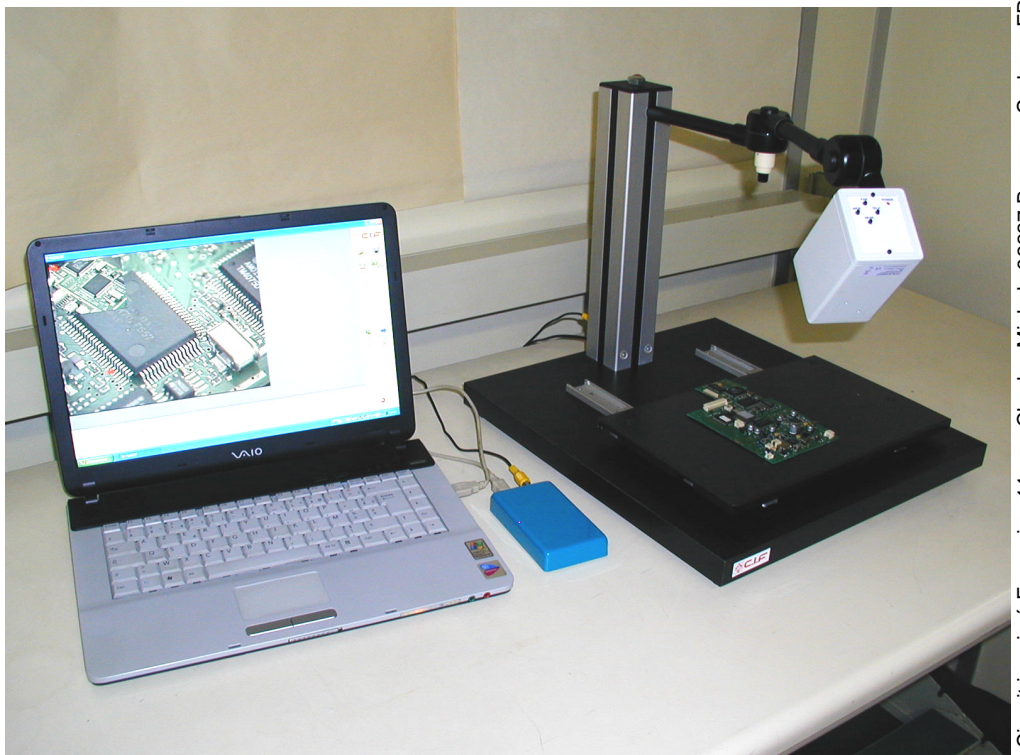
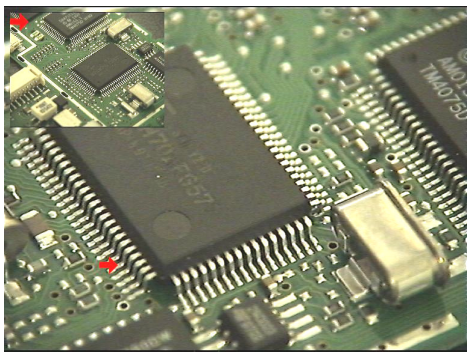
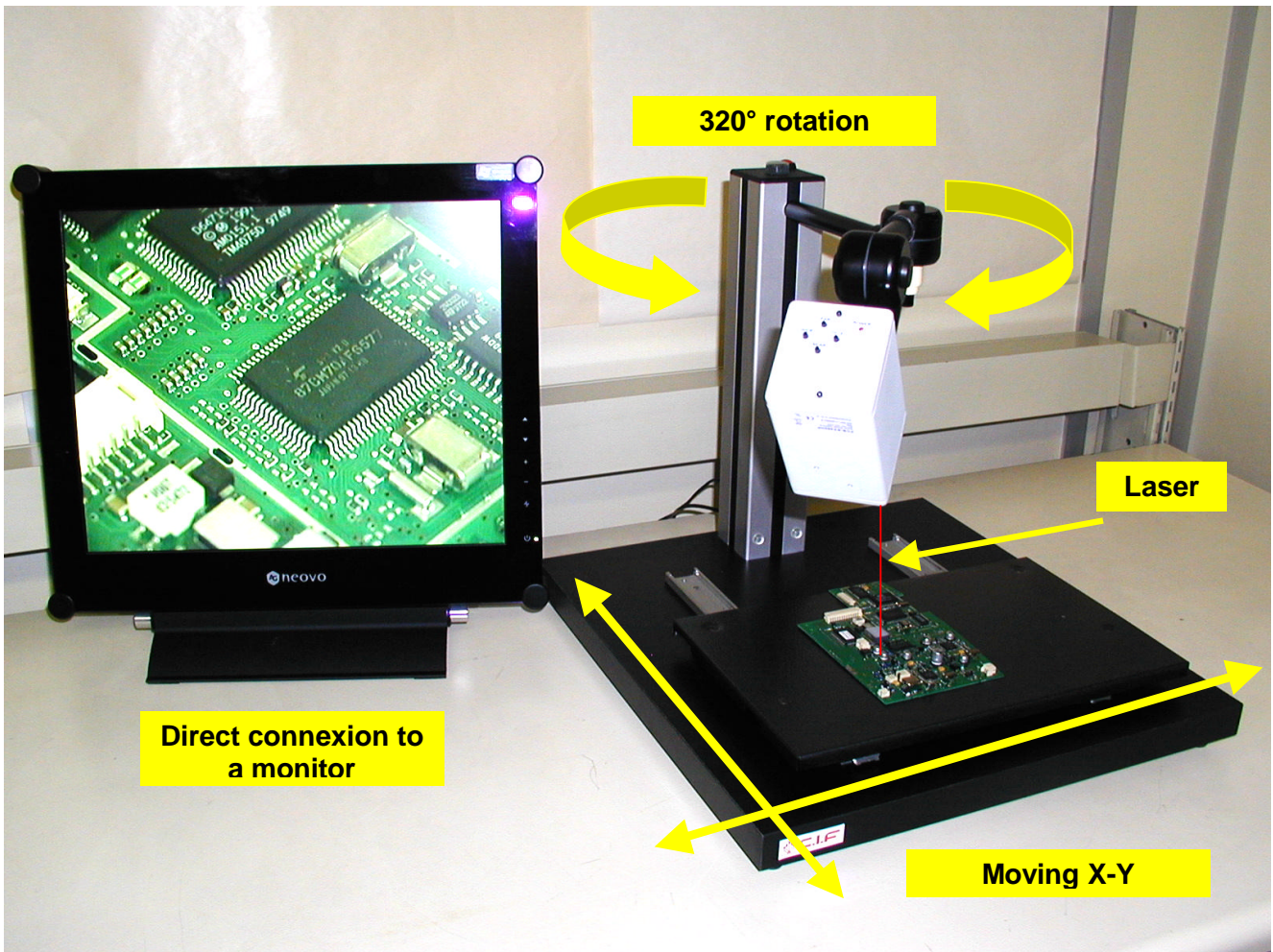
VISUTEC connectée à un PC

TECHNICAL SPECIFICATIONS

Technical specifications	VISUTEC
Camera	
Camera IXH45CP with + or – zoom control	Optical Zoom x18 x30 on a 15" screen
Standard enlargement	Yes - standard
Manual and automatic focus	Yes
Supplementary lens macro 3D	12 / 210 mm
Mini / maxi shot	+/- 320°
Camera Rotation	+/- 45°
Camera mounted on adjustable ball and socket joint	
Stand	
Aluminium stand 12 mm + profiled post 60 x 60 mm	
Spotting at the base of the piece	Laser pointer
On/off laser switch	Yes
Stand dimension (width x length)	430 x 400 mm
Moving table on X and Y axes	330 x 200 mm
Swan neck	170 mm
Option	
Software and converting box video USB2	Yes
Dimensions ext. L x l x H	400 x 430 x 390 mm
Net weight	7 Kg
Electrical connection	230 V - 50/60 Hz

Versions	Code article
Each VISUTEC is delivered with an optical zoom camera based on a stand, an X-Y moving table and a laser pointer.	
Visutec – without screen	W9 00005
Visutec 1 - with 15" screen	W9 00008
Visutec 2 - with 17" screen	W9 00006
Visutec 3 - with 17" professional screen (metal frame and glass screen)	W9 00007
Options	
Software and converting box video USB2	W8 00004
Color multistandard flat screen 15"	W8 00005
Color multistandard flat screen 17"	W8 00006
Color multistandard flat screen 17", with metallic reinforced frame	W8 00007





- Connexion to a PC
- Saving the pictures
- Possibility to include , date, hour, free text
- Defaults marking arrows