

# PRODUCT DATASHEET

## PL PFM 1200X300 UGR<19 30 W 3000 K

**PANEL PERFORMANCE 1200x300 UGR<19 | Rectangular recessed panel luminaires, tool-free installation and low glare, for 1200 x 300 mm ceiling systems**



---

### AREAS OF APPLICATION

- Direct replacement for luminaires with fluorescent lamps
- Offices, conference rooms
- Reception areas, foyers, corridors, elevators
- Suitable for recessed ceiling systems with grid size of 300 x 1200 mm

---

### PRODUCT BENEFITS

- Tool-free electrical connection due to push button connector
- Through-wiring possible with included connector box
- Energy savings thanks to high system efficacy: up to 120 lm/W
- Good glare reduction (UGR < 19)
- Extended services such as energy monitoring and remote maintenance possible with DALI versions
- Comfortable light and high color consistency
- External driver for extended flexibility and easy installation
- Low flicker light thanks to special electronic control gear
- Emergency lighting possible with LEDVANCE Emergency Conversion Box
- 5 years guarantee

---

### PRODUCT FEATURES

- Extruded aluminum frame
- Polystyrene diffuser



- 3-pole terminal block, cable cross section up to 3 x 2.5 mm<sup>2</sup>
- 5-pole terminal block, cable cross section up to 5 x 2.5 mm<sup>2</sup> (DALI versions)
- Luminaire versions with IoT-ready DALI-2 driver available
- Versions available with CRI 90
- Lifetime (L80/B10): up to 60,000 h (at 25 °C)

## TECHNICAL DATA

### Electrical data

Nominal wattage	30.00 W
Operating mode	External LED driver
Nominal voltage	220...240 V
Mains frequency	50/60 Hz
Power factor $\lambda$	>0.93
Max. no. of lum. on circuit break. B16 A	21
Max. no. of lum. on circuit break. C10 A	20
Max. no. of lum. on circuit break. C16 A	33
Inrush current	30 A
Total harmonic distortion	< 10 %
Inrush current time $T_{h50}$	200 $\mu$ s

### Luminaire control gear data

ECG - Life time	74 000 h
Low flicker	Yes
Output current	900 mA
ECG - Output ripple current	<5 %

### Photometrical data

Color temperature	3000 K
Color rendering index Ra	>80
Light color (designation)	Warm White
Luminous flux	3450 lm
Luminous efficacy	115 lm/W
Standard deviation of color matching	3 sdc

### Light technical data

Beam angle	90.00 °
UGR lateral	<19
UGR longitudinal	<19

Dimensions & weight



<b>Length</b>	1195 mm
<b>Width</b>	295.0 mm
<b>Height</b>	9.0 mm
<b>Product weight</b>	1700.00 g
<b>Mounting width</b>	290.0 mm
<b>Mounting length</b>	1190.0 mm

Colors & materials

<b>Product color</b>	White
<b>Housing color</b>	White
<b>Body material</b>	Aluminum
<b>Light emitting surface material</b>	Polystyrene

Temperatures & operating conditions

<b>Ambient temperature range</b>	-10...+45 °C
----------------------------------	--------------

Lifespan

<b>Number of switching cycles</b>	50000
<b>Lifespan L70/B50 at 25 °C</b>	100000 h
<b>Lifespan L80/B10 at 25 °C</b>	60000 h
<b>Lifespan L90/B10 at 25 °C</b>	35000 h

Additional product data

<b>Mounting type</b>	Recessed/Suspended/Surface
<b>Mounting location</b>	Ceiling / Wall
<b>Recommended control gear</b>	OSRAM OTI DALI 50/220-240/1A4 NFC
<b>Low flicker</b>	Yes
<b>Product remark</b>	Available from July 2020

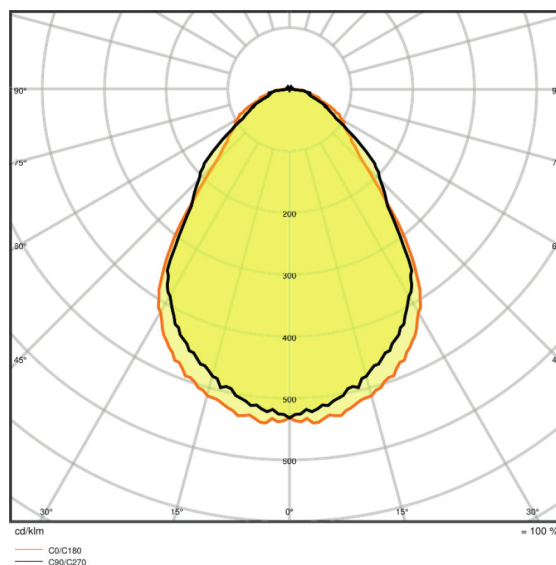
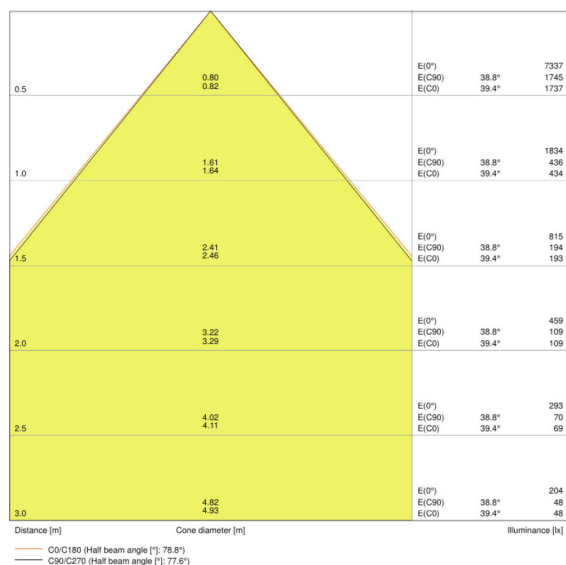
Capabilities

<b>Dimmable</b>	No
<b>Type of connection</b>	Screwless terminal
<b>LED module replaceable</b>	Not replaceable

Certificates & standards

<b>Type of protection</b>	IP40/IP20
<b>Protection class</b>	II
<b>Protection class IK (shock resistance)</b>	IK03
<b>Glow Wire Test according to IEC 60695-2-12</b>	850 °C
<b>Photobiological safety group EN62778</b>	RG0
<b>Photobio. safety group acc. to EN62471</b>	RG0
<b>Standards</b>	CE/CB/ENEC/EAC/RoHS

Light Distribution



LDC typ cone

LDC typ polar

EQUIPMENT / ACCESSORIES

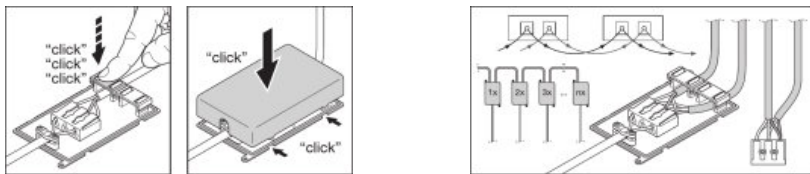
- Accessories for several mounting options available
- Connector box with 3-pole terminal included
- Security rope for luminaire included
- Security brackets included
- External control gear included

**LOGISTICAL DATA**

Product code	Packaging unit (Pieces/Unit)	Dimensions (length x width x height)	Gross weight	Volume
4058075440098	Folding carton box 1	330 mm x 1285 mm x 43 mm	3703.00 g	18.23 dm <sup>3</sup>
4058075440104	Shipping carton box 4	1314 mm x 176 mm x 328 mm	9766.00 g	75.85 dm <sup>3</sup>

The mentioned product code describes the smallest quantity unit which can be ordered. One shipping unit can contain one or more single products. When placing an order, for the quantity please enter single or multiples of a shipping unit.

**ADDITIONAL CATALOG INFORMATION**



**REFERENCES / LINKS**

For Guarantee see  
 ▶ [www.ledvance.com/guarantee](http://www.ledvance.com/guarantee)

**DISCLAIMER**

Subject to change without notice. Errors and omission excepted. Always make sure to use the most recent release.