




# EDU34450A Smart Bench Essentials Digital Multimeter



Dual-measurement color display

[Get Quote](#)

-  Sold by Authorized Sales Partners - Check availability
-  See Buy or Rent Options
-  Visit Technical Support

Share your story to win a complete set of Smart Bench Essentials instruments.

[Learn More](#)

Learn more about the Smart Bench Essentials Challenge contest.



[Highlights](#)

[Specifications](#)

[Options and Upgrades](#)

[Software, Accessories, Services](#)

[Resources](#)

## HIGHLIGHTS

### Affordable Industry-Grade Measurement Capabilities

The Keysight EDU34450A is a modern digital multimeter (DMM) designed for bench applications. It measures a broad range of input signals and features 5½ digits of resolution and up to 110 readings/s measuring rate for speed-critical tests. It includes generous internal memory, allowing prolonged data logging of up to 5,000 data points. You get the benefits of Keysight measurement performance in an affordable and compact package, with the following features:-

- combination of hard and soft keys for more intuitive front-panel operation
- signature 7-inch dual-measurement color display
- standard USB and LAN for flexible PC connectivity
- USB flash drive support to copy / load configuration for repeated test setup
- ability to measure up to 11 types of input signals
- PathWave BenchVue DMM software for remote control and data logging



## SMART BENCH ESSENTIALS SERIES

The Keysight Smart Bench Essentials Series is a set of four professional-grade instruments — a DMM, power supply, function generator, and oscilloscope — plus powerful PathWave remote connectivity software and 24/7 technical support. PathWave software enables you to harness the power of four instruments in a single software interface. You need little or no training to set up and control your test hardware. Intuitive lab tools track your instruments and keep them up to date. Test, analyze, and share results collaboratively, across the room or around the world. For the first time, your bench devices will connect to you, each other, the lab, the cloud, and your next innovation.



## Solution Brief

## KEY SPECIFICATIONS

**1-Year DCV Accuracy**  
0.015%

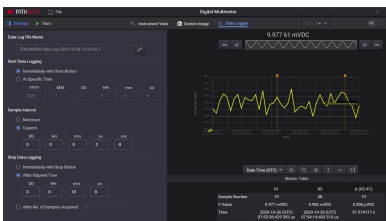
**Reading Speed**  
110 readings/sec

**Memory**  
5,000 data points

## Measurement Types

AC / DC voltage, AC / DC current, 2 / 4-wire resistance, capacitance, diode test, temperature, frequency, continuity

Want to see more specifications?



## SIMPLIFY DATA GATHERING AND ANALYSIS

PathWave BenchVue DMM software for the PC makes it simple to connect, control, capture, and view Keysight DMMs with no additional programming.

- Easily log data, screenshots, and system state. Rapidly prototype custom test sequences.
- Recall the past state of your bench to replicate results.
- Quickly export measurement data in the desired format.
- Quickly access manuals, drivers, FAQs, and videos.

The software allows you to control DMMs to visualize measurements and perform unrestricted data logging and statistical analysis.

[Check Out PathWave BenchVue Software](#)

## ACCELERATE THE WIN WITH TECHNICAL SUPPORT

The Smart Bench Essential Series comes with KeysightCare support. You will have access to technical experts from Keysight and 24/7 knowledge center to help you get up to speed in the shortest amount of time.

What do you get?

- 2-business-day technical response
- online knowledge center
- self-service web portal

[Learn More About KeysightCare](#)



## Interested in an EDU34450A?

[View Options and Upgrades](#) →

[See Buy or Rent Options](#) →

## EXPLORE THE CAPABILITIES

## Software

[See Related Software](#)

## Accessories

[See Related Accessories](#)

## Services

[KeysightCare Service and Support](#) >  
[Calibration Services](#) >  
[Education Services](#) >  
[Technology Refresh Services](#) >  
[Financial Services](#) >

[See All Services](#)**Support**

Resources >  
 Drivers, Firmware & Software >  
 Calibration and Repair >  
 Training and Events >

[See All Support](#)

## FEATURED RESOURCES

eBooks 2019.09.10  <b>Sensor Measurements Using a DMM</b>	White Papers 2019.08.21  <b>7 Tips to Improve DMM Measurement Throughput</b>	eBooks 2019.04.23  <b>Test Accuracy ABCs – Calibrate</b>	<b>View All Resources</b>
--	---	---	---------------------------

Want help or have questions?

[Contact Us](#)**DISCOVER**

Products + Services  
 Solutions  
 Industries  
 Events  
 Keysight University

**ABOUT KEYSIGHT**

Newsroom  
 Investor Relations  
 Corporate Social Responsibility  
 Modern Slavery Act Transparency Statement  
 Careers

**EXPLORE**

Success Stories  
 Resources  
 Blog  
 Community

**PARTNERS****SUPPORT**

Keysight Product Support  
 Ixia Product Support  
 Manage Software Licenses

**MYKEYSIGHT**