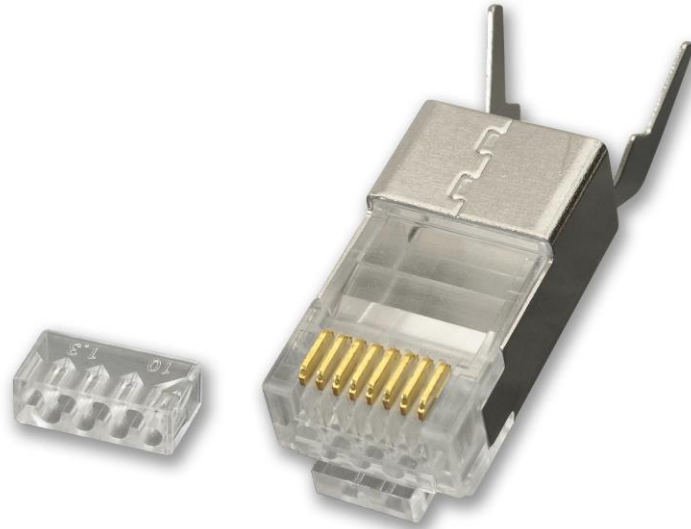


KAUDEN™

Item Code LC6A145-10
CAT6A/CAT7/CAT8 Shielded RJ45 Plug with extended earth clip
(Pack of 10)



- Suitable for CAT6A, CAT7 and CAT8 Cables. Special CAT6A RJ45 crimp tool for extended earth clip required – see KAUDEN XT486 for example
- Universal type for solid installation or patch cord stranded cables. 1.45mm max conductor size
- Two-part design with extended ground clip used for outside cables up to 8.5mm diameter
- Use only special RJ45 Crimping Tool designed for Extended Earth Clip Plugs (available)
- Made from Polycarbonate – UL94 Rated Flame Retardant-50 Micron Gold Plated

These types of plugs are generally used on CAT6A/ CAT7 or CAT8 oversized cables which are now becoming common place and have larger inner conductors which are too large for standard plugs (having a smaller hole size for the inner conductors). Also, on these plugs there is no push down cable clamp as used on the standard RJ45 plugs and therefore you need a special crimp tool which also should be able to clamp the extended ground clip around the cable. Designated Crimp tool is available. Search for KAUDEN XT486 Dual use crimping tool

General

Sale Unit Pack of 10 Plugs
Barcode 5028088011829
Commodity Code 8536700099
Dimension Packed 130x80x10 mm Height Width Depth
Weight 0.0033kg

For Trade and Bulk buyers

Outer Pack Quantity 10 x Pack of 10 Plugs

Technical

Connector Type RJ45
Max Conductor size 1.45mm
Max Cable Diameter 8.5mm
Gold Plated 50 Micro Inches
Working Temperature -40C to +85C



With Boot attached (not included)

Sample test sheet for patch cord using the plug listed here



Cable ID: CAT8-S/FTP-2M-01

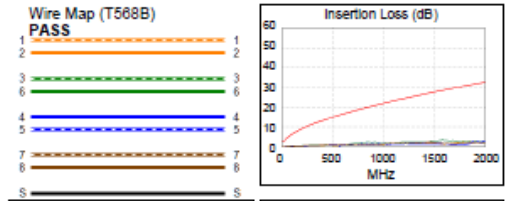
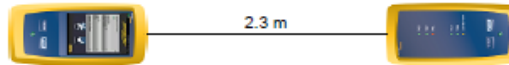
Date / Time: 07/18/2018 01:43:04 PM
 Headroom 15.1 dB (NEXT 36-45)
 Test Limit: TIA Cat 8 Channel
 Cable Type: Cat 8 S/FTP
 NVP: 78.0%

Operator: YG
 Software Version: V5.5 Build 2
 Limits Version: V6.3
 Calibration Start Date:
 Main (Module): 01/17/2018
 Remote (Module): 01/17/2018

Test Summary: PASS

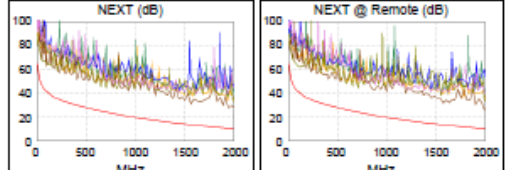
Model: DSX-8000
 Main S/N: 1751276
 Remote S/N: 1751282
 Main Adapter: DSX-CHA804
 Remote Adapter: DSX-CHA804

Length (m), Limit 30.0	[Pair 12]	2.3
Prop. Delay (ns), Limit 179	[Pair 12]	10
Delay Skew (ns), Limit 17	[Pair 12]	0
Resistance (ohms), Limit 6.40	[Pair 45]	0.28
Resist. Unbal. (ohms), Limit 0.100	[Pair 12]	0.009
Resist. P2P Unbal. (ohms), Limit 0.200	[Pair 12-45]	0.006
Insertion Loss Margin (dB)	[Pair 36]	25.0
Frequency (MHz)	[Pair 36]	1586.0
Limit (dB)	[Pair 36]	28.6

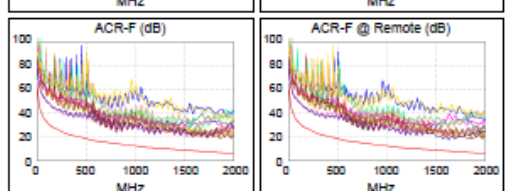


Worst Case Margin Worst Case Value

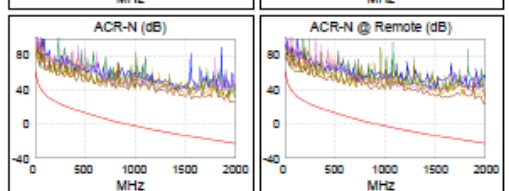
	MAIN	SR	MAIN	SR
PASS				
Worst Pair	36-45	36-45	36-45	36-45
NEXT (dB)	16.9	15.1	16.9	16.2
Freq. (MHz)	1948.	3.6	1948.	1994.
Limit (dB)	10.2	64.5	10.2	9.9
Worst Pair	36	36	36	36
PS NEXT (dB)	18.4	16.8	18.4	17.7
Freq. (MHz)	1946.	3.3	1946.	1996.
Limit (dB)	7.7	62.0	7.7	7.4



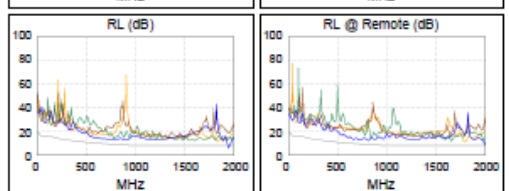
	MAIN	SR	MAIN	SR
PASS				
Worst Pair	45-36	78-36	36-45	45-36
ACR-F (dB)	9.7	9.7	10.6	9.9
Freq. (MHz)	804.0	1628.	1864.	1860.
Limit (dB)	13.9	7.7	6.6	6.6
Worst Pair	36	36	36	36
PS ACR-F (dB)	10.0	9.3	10.4	9.3
Freq. (MHz)	1572.	1684.	1738.	1684.
Limit (dB)	5.0	4.4	4.2	4.4



	MAIN	SR	MAIN	SR
N/A				
Worst Pair	36-45	36-45	36-45	36-45
ACR-N (dB)	20.2	18.1	46.8	46.4
Freq. (MHz)	3.4	3.6	1946.	1994.
Limit (dB)	62.0	61.5	-21.9	-22.8
Worst Pair	36	36	36	36
PS ACR-N (dB)	21.6	19.8	48.0	47.8
Freq. (MHz)	3.4	3.3	1950.	1996.
Limit (dB)	58.7	59.0	-24.5	-25.3



	MAIN	SR	MAIN	SR
PASS				
Worst Pair	45	45	45	12
RL (dB)	2.6	3.7	2.6	2.1
Freq. (MHz)	1978.	1984.	1978.	1794.
Limit (dB)	8.0	8.0	8.0	8.0



Compliant Network Standards:
 10BASE-T 100BASE-TX 100BASE-T4
 100BASE-T 2.5GBASE-T 5GBASE-T
 10GBASE-T 25GBASE-T 40GBASE-T
 ATM-25 ATM-51 ATM-155
 100VG-AnyLan TR-4 TR-16 Active
 TR-16 Passive

LinkWare™ PC Version 10.1

Project: □□□

Untitled1

