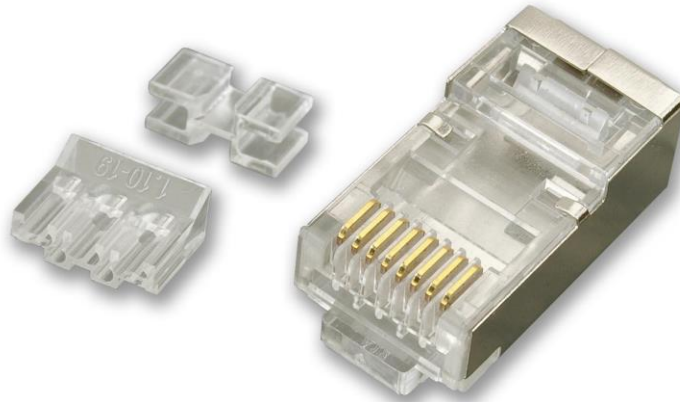




Item Code – LC6A101/10
CAT6/CAT6A Shielded RJ45 Plug
(pack of 10)



- For CAT6 solid or stranded FTP cables up to 6.5mm diameter
- For CAT6A stranded FTP cables up to 6.5mm diameter
- Suitable for both solid and stranded cable due to 3 prongs plug pins
- 1.1mm max conductor size... Three-part design
- Rear separator can be discarded if required but is supplied as standard
- Use with standard RJ45 Crimping Tool

CAT6 you may be able to use on stranded or solid type in most cases. In any event these plugs can be used on solid and stranded inner conductors with a maximum diameter of 1.1mm.

For CAT6A cables, these plugs are commonly used to make stranded style patch cords and not for use on larger outsized solid core cables which use another type of RJ45 plug with extended earth clip and can incorporate larger conductor sizes (also available in the KAUDEN range). For

This plug is a three-part design to obtain maximum performance when used on CAT6A cables. You have the Plug body, the loading bar and a rear separator. For CAT6 cable you normally do not need to use the rear separator.

The loading bar is a six up- two down design which will optimize the performance for this type of RJ45 plug. Made from Polycarbonate – UL94V2 Flame Retardant. 8 contacts, 50 Micron Gold Plated

General

Sale Unit	Pack of 10 Plugs
Barcode	5028088011874
Commodity Code	8536700099
Dimension Packed	130x80x10 mm Height Width Depth
Weight	0.025 kg

For Trade and Bulk buyers

Outer Pack Quantity	10 x Pack of 10 Plugs
---------------------	-----------------------

Technical

Connector Type	RJ45
Max Conductor size	1.1mm
Max Cable Diameter	6.5mm
Gold Plated	50 Micro Inches
Working Temperature	-40C to +85C
Dielectric Withstanding Voltage test 1000V/DC	
Insulation Resistance	>500MΩ.
Contact Resistance	<20mΩ