

Data sheet Illuminated pushbutton Ø 22 mm stainless steel 316L.

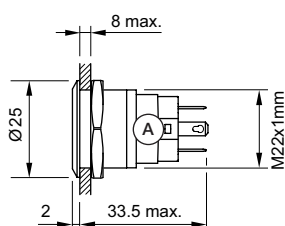
Part No.: 82-6651.2000

Technical data

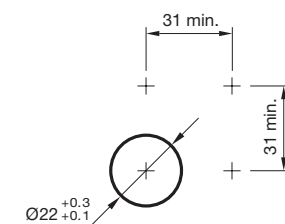


Front form	round
Mounting cut-out	Ø 22.3 mm
Terminal	Plug-in terminal
Lens illumination	non illuminative
Lens colour	Silver
Lens shape	flush
Lens material	Stainless steel 316L
Lens optics	opaque
Front bezel shape	flush
Front bezel material	Stainless steel 316L
Weight	0.023 kg
IP front protection	IP65, IP67
Contacts change over	1 C
Contact material	Silver
Switching action	Maintained
Switching voltage	36 V
Switching voltage kind of	AC/DC
Switching current	0.6 A
Switching system	Snap-action switching element
Hints	
	▪ Switching voltage: max. 36 V AC/1A, max. 36 V DC/0.6

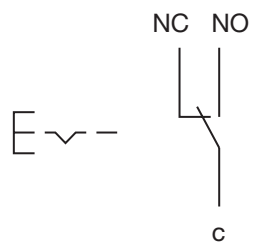
Dimensions



Mounting cut-outs



Wiring diagrams



Component layouts

