

Han 24EMC/B-HBM-Rear Fit-DL-w/o frame

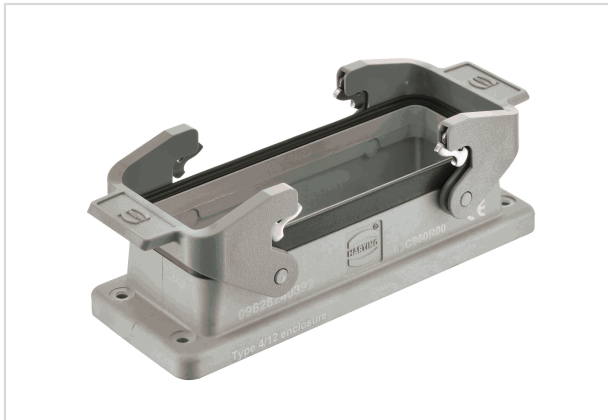


Image is for illustration purposes only. Please refer to product description.

| | |
|--------------------|---|
| Part number | 09 62 824 0392 |
| Specification | Han 24EMC/B-HBM-Rear Fit-DL-w/o frame |
| HARTING eCatalogue | https://b2b.harting.com/09628240392 |

Identification

| | |
|-----------------------------|--------------------------------|
| Category | Hoods/Housings |
| Series of hoods/housings | Han [®] EMC/B |
| Type of hood/housing | Bulkhead mounted housing |
| Description of hood/housing | Rear mounting External seal |
| Type | Low construction |

Version

| | |
|----------------------------|--|
| Locking type | Double locking lever |
| Han-Easy Lock [®] | Yes |
| Size | 24 B |
| Field of application | Hoods/Housings for higher EMC requirements |

Technical characteristics

| | |
|--|-----------------|
| Limiting temperature | -40 ... +125 °C |
| Degree of protection acc. to IEC 60529 | IP66 |
| Type rating acc. to UL 50 / UL 50E | 4 12 |

Material properties

| | |
|-------------------------|--------------------|
| Material (hood/housing) | Aluminium die-cast |
| Surface (hood/housing) | Uncoated |
| Colour (hood/housing) | Unpainted |
| Material (seal) | NBR |



Pushing Performance

Material properties

| | |
|--|---------------------------------------|
| Material (locking) | Polycarbonate (PC) Stainless steel |
| Colour (locking) | RAL 7037 (dust grey) |
| Material (accessories) | Polyamide (PA) Stainless steel |
| Material flammability class acc. to UL 94 (locking levers) | V-0 |

Specifications and approvals

| | |
|-----------|--|
| Approvals | DNV GL |
| UL / CSA | UL 1977 ECBT2.E235076 CSA-C22.2 No. 182.3 ECBT8.E235076 |
| CE | Yes |

Commercial data

| | |
|--------------------------------|--|
| Packaging size | 1 |
| Country of origin | China |
| European customs tariff number | 85389099 |
| eCl@ss | 27440202 Shell for industrial connectors |