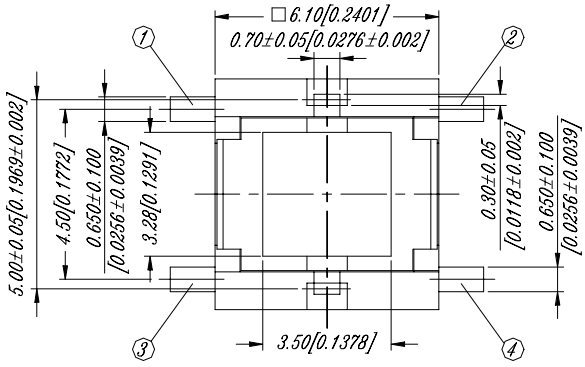
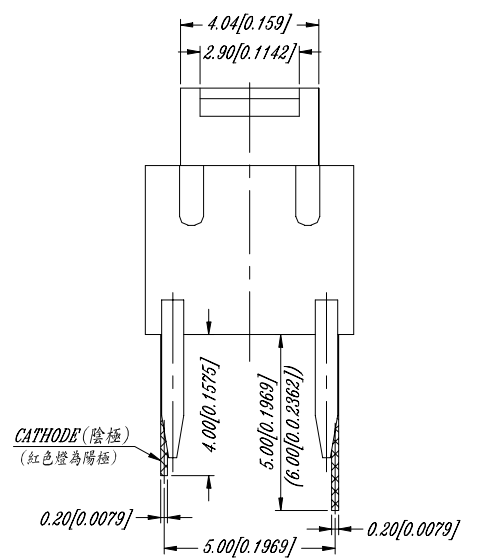
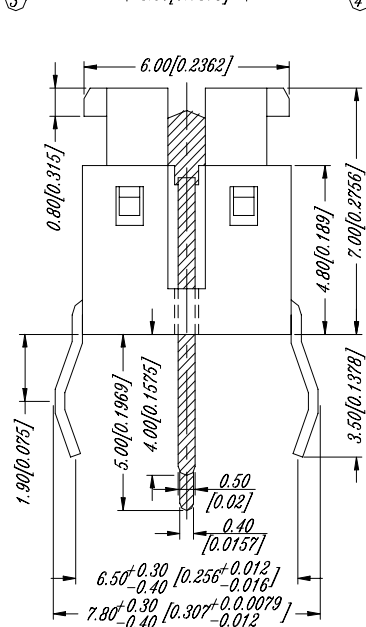
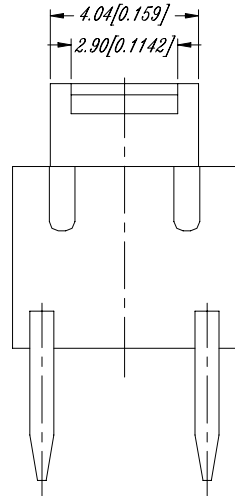
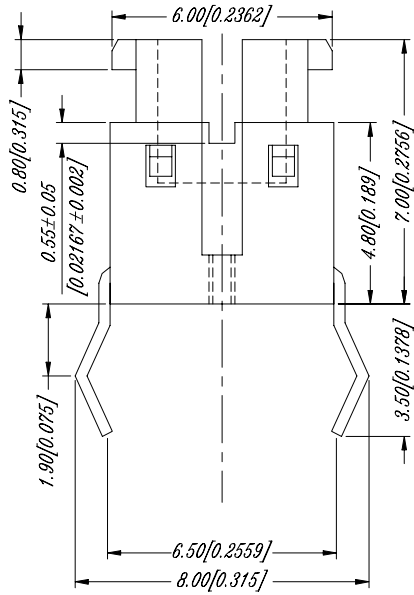
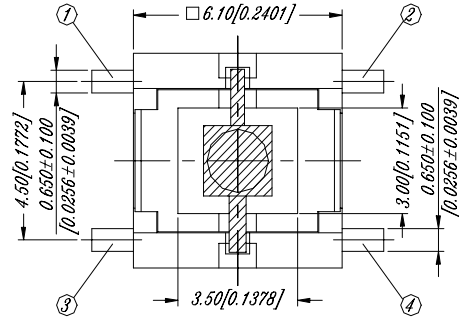


TL(L)-6 SERIES

DIMENSIONS

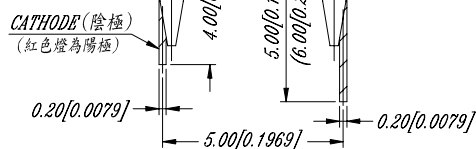
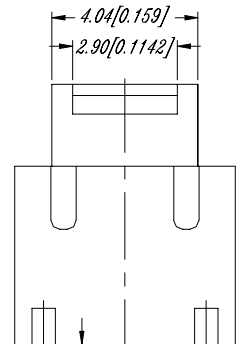
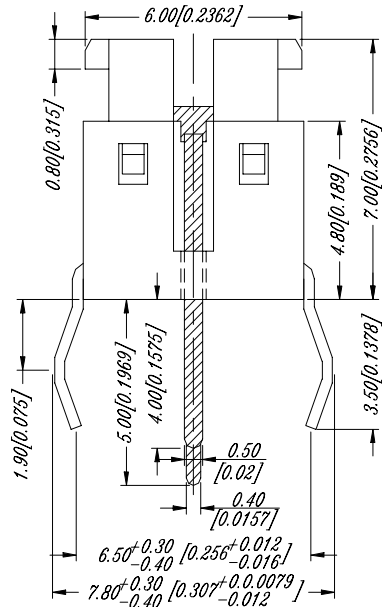
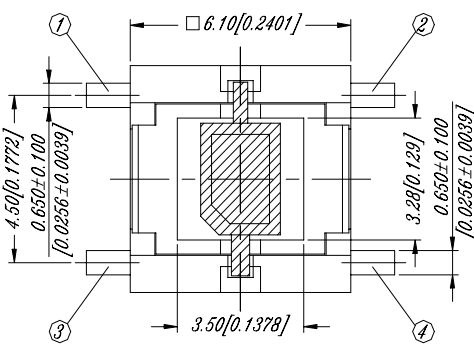


品名	荷重	顏色
TL-61	100±50g	K-黑色
TL-62	160±50g	N-棕色
TL-63	260±50g	W-白色



TL-6

TLL-6 B



TL-6 A

T L L - 6 3 A R L

產品名稱: 有加LED燈

LED燈端子腳長為6.0mm

LED燈顏色: R Red, B Blue, Y Yellow, W White, G Green

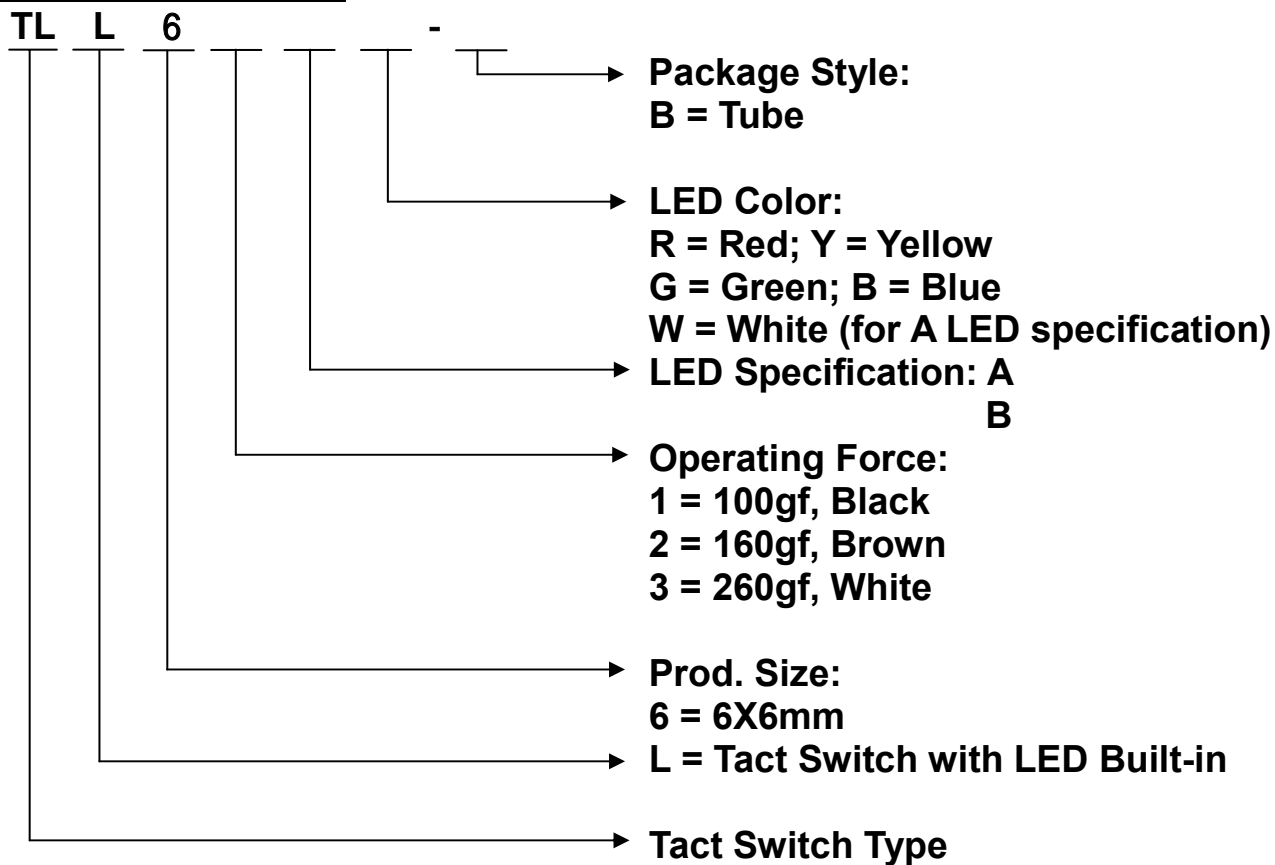
操作力(荷重): 1 100g, 2 160g, 3 260g

LED燈外觀型式: A, B

*LED燈外觀型式未註明, 表示LED燈由客戶提供, 但客戶必須告知LED燈測試之電壓及電流

*白燈外觀型式無B型式

HOW TO ORDER



SPECIFICATION

MECHANICAL

Operation Force:

100 ± 50gf TL(L)-61

160 ± 50gf TL(L)-62

260 ± 50gf TL(L)-63

Stroke: 0.20 + / - 0.10 mm

Operation Temperature: -25 to +70

Storage Temperature: -30 to +80

ELECTRICAL

Electrical Life: 200,000 cycles min. for TL(L)-61,62,63

Rating: 50mA, 12VDC

Contact Resistance: 100m max.

Insulation Resistance: 100MΩ min. 500VDC

Dielectric Strength: 250VAC/ minute

Contact Arrangement: SPST

MATERIALS

CONTACT DISC: Stainless steel

TERMINAL: Brass with silver plating

BASE: LCP High-temp. thermoplastic

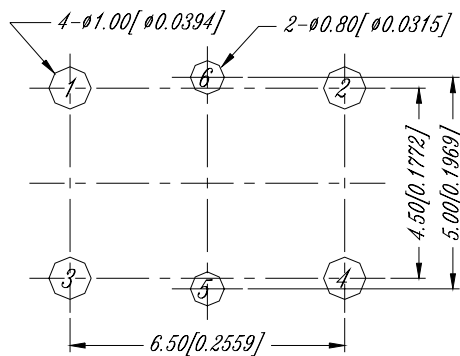
Color: Black

STEM: NYLON High-temp. Thermoplastic

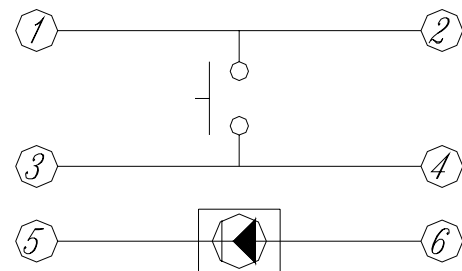
Color: Black / TL(L)-61

Brown / TL(L)-62

White / TL(L)-63



P.C.B LAYOUT



CIRCUIT DIAGRAM

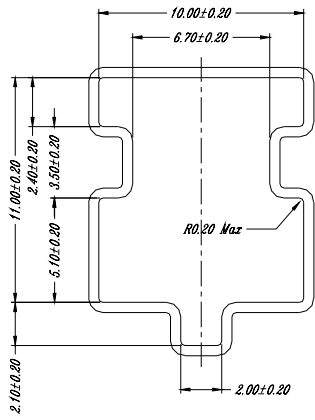
SOLDERING PROCESS

WAVE SOLDERING : Recommended solder temperature at 500 (260) max. 5 seconds.

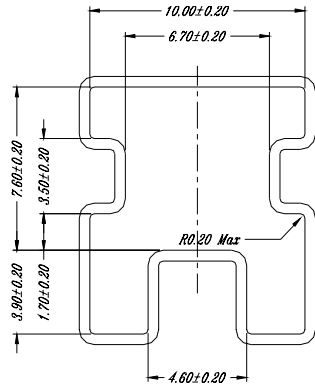
HAND SOLDERING : Use a soldering iron of 30 watts, controlled at 608 (320) approximately 2 seconds.

PACKING

Part Number	Number Per Tube	
TL(L)-6	77	



TLL-6



TL-6