



Connectors > Rectangular Connectors > Rectangular Connector Hoods & Bases



Hood & Base Connector Product Type: Hood

Cable Entry Location: Top & Side

Features

Product Type Features

Product Size	2
Hood & Base Connector Product Type	Hood

Body Features

Material	Die Cast Aluminum
Color	Gray
Cable Entry Location	Top & Side

Mechanical Attachment

Locking Device Location	Housing
Screw & Hole Thread Size	M25

Usage Conditions

Corrosion Protected	Yes
---------------------	-----

Packaging Features

Packaging Quantity	1
Packaging Method	Bag

Product Compliance

[For compliance documentation, visit the product page on TE.com>](#)

EU RoHS Directive 2011/65/EU	Compliant
EU ELV Directive 2000/53/EC	Compliant
China RoHS 2 Directive MIIT Order No 32, 2016	No Restricted Materials Above Threshold
EU REACH Regulation (EC) No. 1907/2006	




Current ECHA Candidate List: JAN 2021
(211)
Candidate List Declared Against: JAN 2021
(211)
Does not contain REACH SVHC

Halogen Content	Not Yet Reviewed for halogen content
Solder Process Capability	Not reviewed for solder process capability


Product Compliance Disclaimer

This information is provided based on reasonable inquiry of our suppliers and represents our current actual knowledge based on the information they provided. This information is subject to change. The part numbers that TE has identified as EU RoHS compliant have a maximum concentration of 0.1% by weight in homogenous materials for lead, hexavalent chromium, mercury, PBB, PBDE, DBP, BBP, DEHP, DIBP, and 0.01% for cadmium, or qualify for an exemption to these limits as defined in the Annexes of Directive 2011/65/EU (RoHS2). Finished electrical and electronic equipment products will be CE marked as required by Directive 2011/65/EU. Components may not be CE marked. Additionally, the part numbers that TE has identified as EU ELV compliant have a maximum concentration of 0.1% by weight in homogenous materials for lead, hexavalent chromium, and mercury, and 0.01% for cadmium, or qualify for an exemption to these limits as defined in the Annexes of Directive 2000/53/EC (ELV). Regarding the REACH Regulation, the information TE provides on SVHC in articles for this part number is based on the latest European Chemicals Agency (ECHA) 'Guidance on requirements for substances in articles' posted at this URL: <https://echa.europa.eu/guidance-documents/guidance-on-reach>


Compatible Parts




TE Part # T2010102101-000
HA-010-M




TE Part # T3609250102-000
DLX-25-M



TE Part # T1019101201-001
H10A-KDTMS



TE Part # T1509101000-000
H10A-AGS



TE Part # T1739101125-000
H10A-TBFS-M25

Also in the Series | [HDC IP65](#)



Rectangular Connector Hoods & Bases
(1258)

Customers Also Bought



TE Part #T1220100125-000
H10B-TG-M25



TE Part #T1410242000-100
H24B-AG



TE Part #YACT24JJ29SNV00100
JAM NUT RECEPTACLE



TE Part #T0931100423-000
CODING-PIN-M3-STM



TE Part #T0931106524-000
CODING-PIN-M3-STF



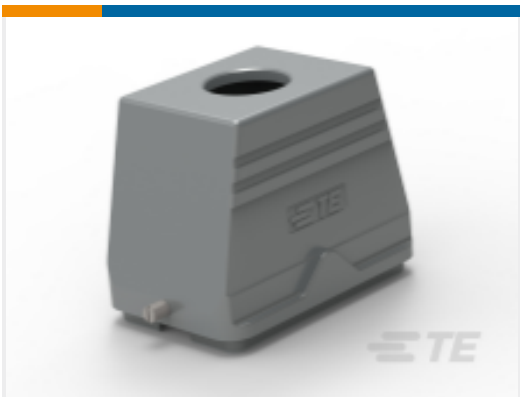
TE Part #T1240243220-000
H24B-TGH-M32/M20



TE Part #T1319100125-000
H10A-TS-M25



TE Part #T1320100125-000
H10B-TG-RO-M25



TE Part #T1320480140-000
H48B-TG-RO-M40



TE Part #T1500103000-000
H10B-AG-LB

Documents

Product Drawings
H10A-TG-M25

English

CAD Files
3D PDF

3D

Customer View Model
ENG_CVM_CVM_T1329100125-000_A.2d_dxf.zip



English

Customer View Model

[ENG_CVM_CVM_T1329100125-000_A.3d_igs.zip](#)

English

Customer View Model

[ENG_CVM_CVM_T1329100125-000_A.3d_stp.zip](#)

English

By downloading the CAD file I accept and agree to the [Terms and Conditions](#) of use.

Datasheets & Catalog Pages

Heavy Duty Connectors

English

HEAVY DUTY CONNECTORS

English

Product Specifications

Application Specification

English

Application Specification