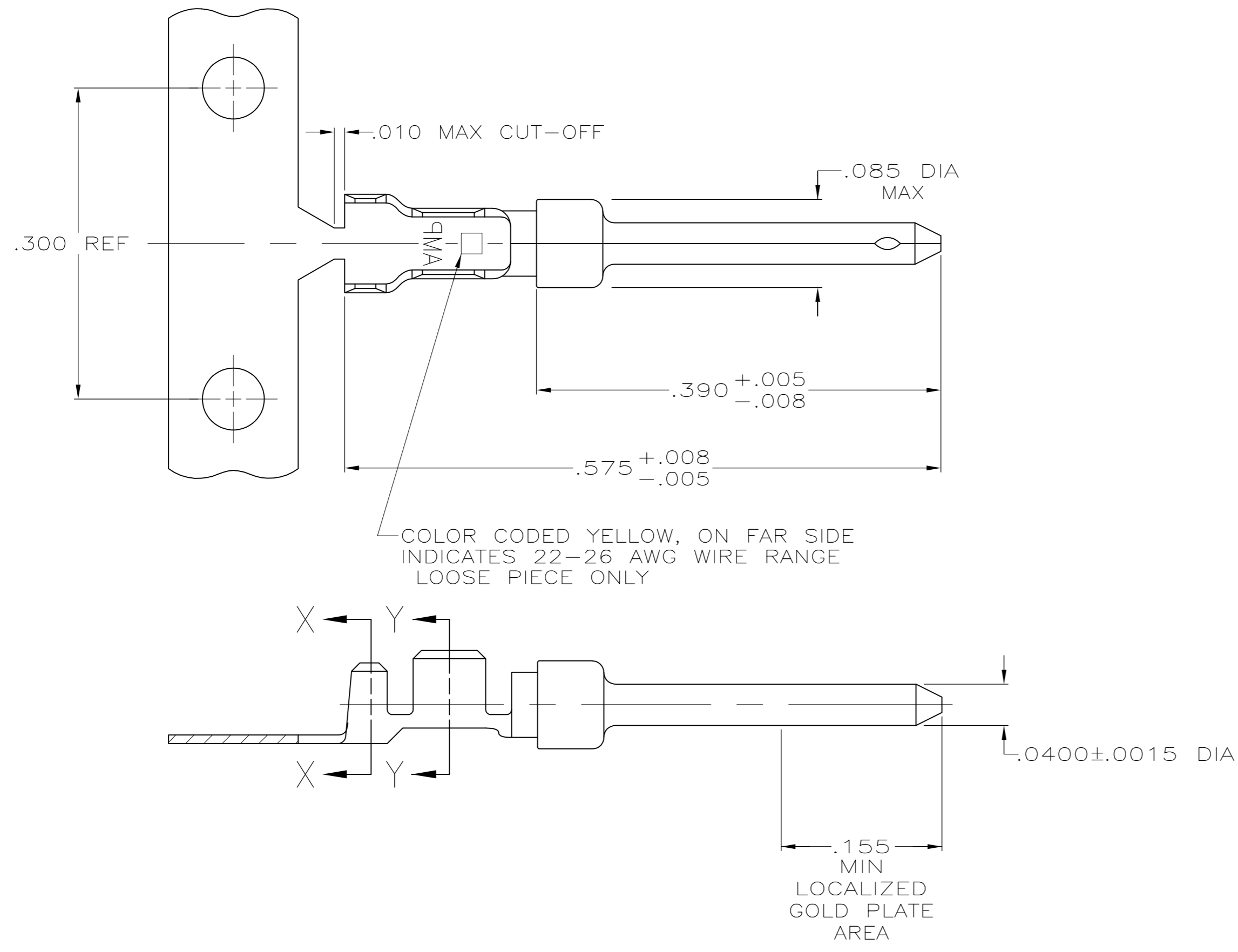


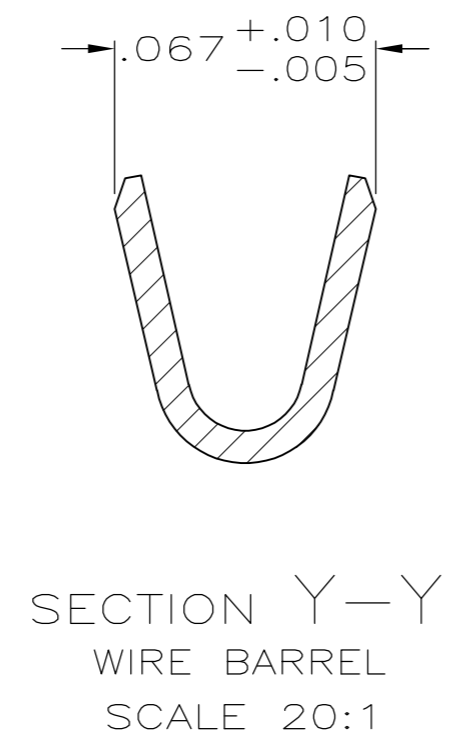
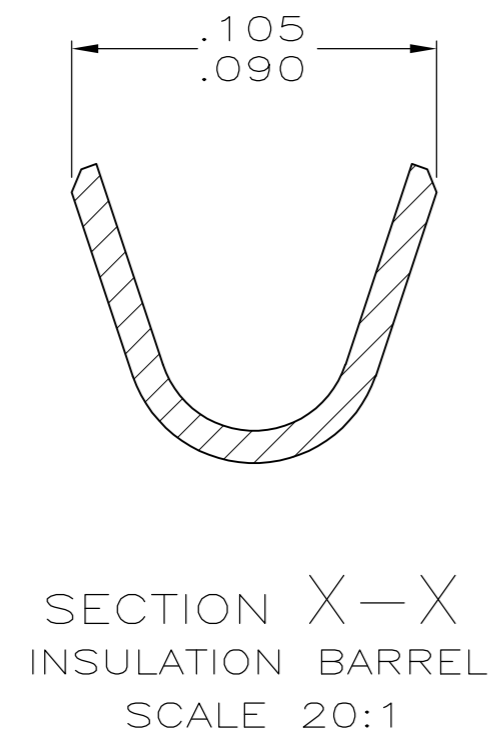
THIS DRAWING IS UNPUBLISHED. RELEASED FOR PUBLICATION  
 © COPYRIGHT BY TYCO ELECTRONICS CORPORATION. ALL INTERNATIONAL RIGHTS RESERVED.

LOC	DIST	REVISIONS					
GP	00	P	LTR	DESCRIPTION	DATE	DWN	APVD
		K		REVISED PER ECO-08-011977	24JUL08	JDP	CWR



- 1 FOR MINI-APPLICATOR.
- 2 FOR HAND TOOL USE ONLY.
- 3. WIRE RANGE OF 22-26, INSULATION RANGE OF .040-.050.
- 4. GOLD PLATING MAY NOT APPEAR ON CARRIER STRIP.
- 5 GOLD PLATING PER MIL-G-45204.  
NICKEL PLATING PER QQ-N-290.  
TIN PLATING PER MIL-T-10727.
- 6 GOLD PLATED IN LOCALIZED GOLD PLATE AREA AS FOLLOWS:  
.000030 MIN GOLD IN MATED AREA,  
GOLD FLASH ON REMAINDER OF CONTACT, ALL OVER  
.000050 MIN NICKEL UNDERPLATE.  
OR  
GOLD FLASH OVER  
PALLADIUM-NICKEL PLATE, .000030 MIN TOTAL IN MATED AREA,  
GOLD FLASH ON REMAINDER OF CONTACT, ALL OVER  
.000050 MIN NICKEL UNDERPLATE.
- 7 .000001 MIN GOLD OVER  
.000030 MIN NICKEL.
- 8 GOLD PLATED IN LOCALIZED GOLD PLATED AREA,  
.000001 MIN GOLD IN MATED AREA,  
TIN PLATED WIRE BARRELS, OVER  
.000030 NICKEL.
- 9 GOLD PLATED IN LOCALIZED GOLD PLATED AREA,  
.000030 GOLD IN MATED AREA,  
TIN PLATED WIRE BARRELS, OVER  
.000050 NICKEL.

OBSELETE	SMALL PACK	7	2	LOOSE PIECE	1-745254-7
OBSELETE	STANDARD	9	2	LOOSE PIECE	1-745254-6
OBSELETE	STANDARD	9	1	STRIP	1-745254-4
OBSELETE	STANDARD	8	2	LOOSE PIECE	1-745254-3
OBSELETE	STANDARD	8	1	STRIP	1-745254-1
	STANDARD	7	2	LOOSE PIECE	745254-7
	STANDARD	6	2	LOOSE PIECE	745254-6
	STANDARD	7	1	STRIP	745254-3
	STANDARD	6	1	STRIP	745254-2
PACKAGING TYPE	FINISH	USE	TYPE	PART NUMBER	



THIS DRAWING IS A CONTROLLED DOCUMENT.

DWN S.WELDON 9-9-86	Tyco Electronics Corporation Harrisburg, PA 17105-3608
CHK C.RICHARD 9-9-86	
APVD V. KUMAR 9-10-86	
PRODUCT SPEC	
MATERIAL BRASS PER MIL-C-50	NAME PIN CONTACT, SIZE 20 DF, 22-26 AWG, W/.040-.050 DIA INSULATION SUPPORT
DIMENSIONS: INCHES	SIZE A2
TOLERANCES UNLESS OTHERWISE SPECIFIED:	CAGE CODE 00779
0 PLC ± -	DRAWING NO C=745254
1 PLC ± -	RESTRICTED TO
2 PLC ± -	SCALE 10:1
3 PLC ± .005	SHEET 1 of 1
4 PLC ± -	REV K
ANGLES ± -	
FINISH 5 SEE TABLE	
WEIGHT -	
CUSTOMER DRAWING	