

FIXED BLADE KNIVES

FAT MAX FIXED BLADE KNIFE



- Fixed blade knife
- Professional quality
- Fine metal body for precise guidance during the cut
- Bimaterial handle
- Easy blade changing without tools
- Effective blocking of the blade
- Blade holder incorporated into the handle which is accessible without tools
- Supplied with 3 spare blades

STANLEY	i			
0-10-799	150 mm	X	6	3253560107994

TITAN FB FIXED BLADE KNIFE



- Professional fixed blade knife
- Light high-resistance aluminum body
- Notched brass tightening wheel
- Rear hinge system and tightening wheel for rapid blade changing without tools
- Stock of blades incorporated in the handle
- Supplied with 3 spare blades

STANLEY	i			
2-10-550	175 mm	X	6	3253562105509
1-10-550	175 mm		12	3253561105500
0-10-170	Holster for 10-550	X	12	3253560101701

INTERLOCK KNIFE FIXED BLADE



- Fixed blade knife
- Made of ribbed steel
- Interlock blade locking system
- Blade holder in the handle
- Delivered with 3 replacement blades

STANLEY	i			
0-10-010	140 mm		12	3253560100100

KNIFE 199 E



- Fixed blade knife
- Zinc alloy body with a grooved surface for comfortable, assured holding
- Interlock system to block the blade laterally even during difficult cuts
- Blade holder inside the handle
- Knife supplied with 3 blades

STANLEY	i			
2-10-199	140 mm	X	12	5000366101996
1-10-199	140 mm		12	3253561101991

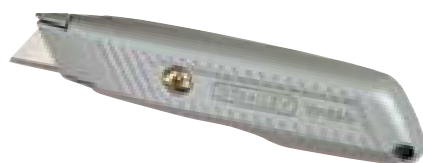
199 E SAW KNIFE SET



- Fixed blade knife
- Zinc alloy body with a grooved surface for comfortable, assured holding
- Interlock system to block the blade laterally even during difficult cuts
- Blade holder inside the handle
- Knife supplied with 3 blades, hacksaw blade and saw blade

STANLEY	i			
0-10-129	140 mm	X	6	3253560101299

299 FIXED BLADE KNIFE



- Metal knife lacquered and grooved for improved holding
- Interlock patented blade locking system for greater safety during cutting
- Integrated blade holder
- Supplied with 3 spare blades

STANLEY	i			
0-10-299	136 mm	X	12	3253560102999