

PRO-ELEC



Stainless Steel Solar Path Light Model: PELL0263

Please read these instructions carefully before use and retain for future reference.

IMPORTANT SAFETY INFORMATION

- Avoid locations of high temperature or humidity.
- The lamp is constructed to IP65 suitable for external use.

WHAT'S INCLUDED

- Lamp assembly x 4.
- User manual.

INSTALLATION

- Installation is simply embedding the spike in the ground ensuring the solar panel is exposed for maximum charging efficiency but not in the vicinity of other strong light source or the low light illumination may not function.
- Remove the top cap by turning the lens then lift it off.
- Remove the insulating tab from the battery.

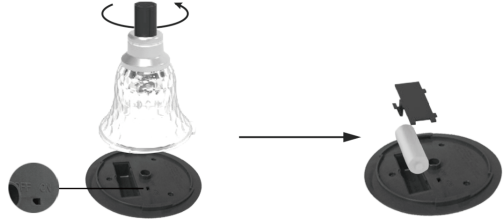


OPERATION

- Allow at least 8hrs for the battery to fully charge initially.

NOTE: the lamp does not light except in low ambient light levels.

- When the ambient light falls below a preset level the LEDs will illuminate.
- During periods where the lamp may not be used such as in Winter, it is advisable to charge the battery occasionally to maintain it's performance and before re-using the lamp.
- If the lighting performance reduces significantly the battery may be getting aged and not retaining it's charge.
- To replace the battery remove the top cap and switch the light off then unclip the battery cover and remove the old battery. Replace with a new one of the same specification noting the polarity and replace the cover then refit the cap.



CLEANING & MAINTENANCE

- Clean the unit only with a damp cloth. Do not use any chemicals, abrasives or solvents that could damage the casing or lens.

SPECIFICATION

Solar panel: Polysilicon 2V, 160mA.

Battery: 1 x AA 600mAh Ni-MH rechargeable.

LED: 1 x SMD 3.0-3.2V 4800-5200K LED.

Working time: up to 6-8 hours.

Material: st steel + Glass construction.

Weight 0.66kgs.



INFORMATION ON WASTE DISPOSAL FOR CONSUMERS OF ELECTRICAL & ELECTRONIC EQUIPMENT.

When this product has reached the end of its life it must be treated as Waste Electrical & Electronic Equipment (WEEE). Any WEEE marked products must not be mixed with general household waste, but kept separate for the treatment, recovery and recycling of the materials used. Contact your local authority for details of recycling schemes in your area.



Made in China
PO Box 13362 Dublin 2
PR2 9PP

Man Rev 1.1