

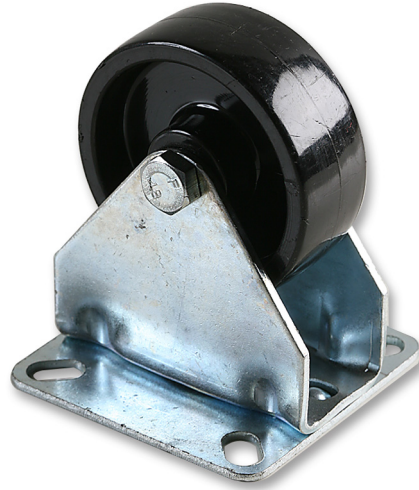
Castors Furniture

DURATOOL

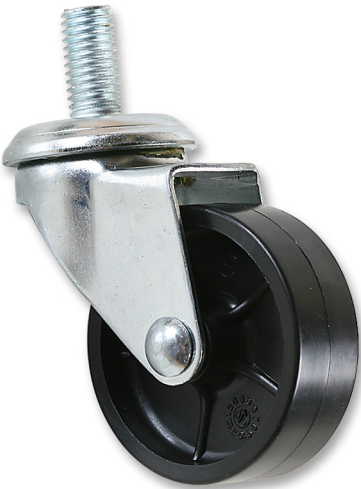
32 4102 and 32 4103



32 5102



32 6102



32 6103



Features:

- This series offers a black nylon 6 plain bore wheel which can be fitted in the following castor housing:
- Top plate swivel and fixed
- Threaded stem swivel and threaded stem.

Recommended Uses:

This wheel is recommended for furniture applications.

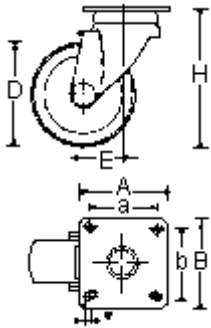
Specifications:

In accordance with ISO 2175. Defines castor and/or wheel application appropriate with environmental conditions-load, speed of use, temperature, floor condition and cycle time.

<http://www.farnell.com>
<http://www.newark.com>
<http://www.cpc.co.uk>

DURATOOL

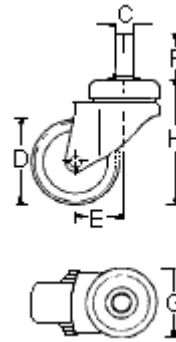
Swivel Castor



Fixed Castor



Threaded Stem Castor



Dimensions : Millimetres

Specification Table

| Description | Wheel Diameter (D) | Thread Width (b) | Overall Height (H) | Plate Dimensions (A x B) | Hole Spacing (a x b) | Hole Width (e) | Offset (E) | Carrying Capacity (kg) | Part Number |
|----------------------------------|--------------------|------------------|--------------------|--------------------------|----------------------|----------------|------------|------------------------|-------------|
| Swivel Castor, Furniture, Single | 50 | 18 | 66 | 42 x 42 | 30 x 30 | 5 | 24 | 40 | 32 4102 |
| | 60 | 22 | 83 | 60 x 60 | 45 x 45 | 6 | 21 | 60 | 32 4103 |
| Fixed Castor, Furniture, Single | 50 | 18 | 66 | 55 x 23 | 42 | 6 | - | 40 | 32 5102 |

Dimensions : Millimetres

Specification Table

| Description | Wheel Diameter (D) | Thread Width (b) | Overall Height (H) | Stem Diameter (C) | Stem Length (F) | Plate Diameter (G) | Offset (E) | Carrying Capacity (kg) | Part Number |
|--|--------------------|------------------|--------------------|-------------------|-----------------|--------------------|------------|------------------------|-------------|
| Threaded Stem Castor, Furniture, Single, M12 | 50 | 18 | 66 | 10M | 20 | 35 | 24 | 40 | 32 6102 |
| | 60 | 22 | 83 | 12M | 25 | 41 | 21 | 60 | 32 6103 |

Dimensions : Millimetres

Disclaimer This data sheet and its contents (the "Information") belong to the Premier Farnell Group (the "Group") or are licensed to it. No licence is granted for the use of it other than for information purposes in connection with the products to which it relates. No licence of any intellectual property rights is granted. The Information is subject to change without notice and replaces all data sheets previously supplied. The Information supplied is believed to be accurate but the Group assumes no responsibility for its accuracy or completeness, any error in or omission from it or for any use made of it. Users of this data sheet should check for themselves the Information and the suitability of the products for their purpose and not make any assumptions based on information included or omitted. Liability for loss or damage resulting from any reliance on the Information or use of it (including liability resulting from negligence or where the Group was aware of the possibility of such loss or damage arising) is excluded. This will not operate to limit or restrict the Group's liability for death or personal injury resulting from its negligence. DURATOOL is the registered trademark of the Group. © Premier Farnell plc 2009.