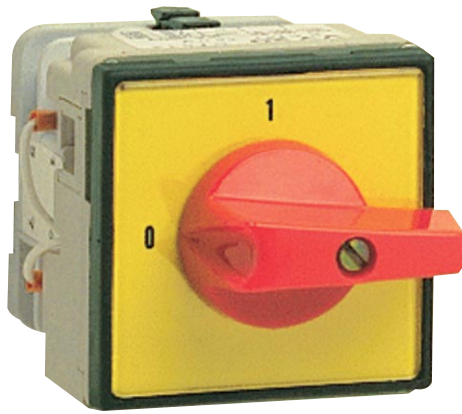
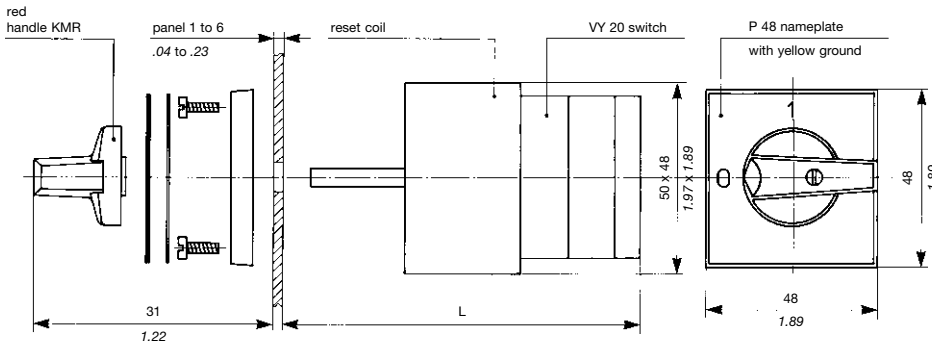


standard safety switches

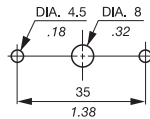
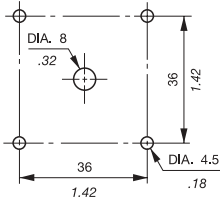


MOUNTING METHOD



L = single-phase unit 51.8 2.04 three-phase unit 64.8 2.55

DRILLING (2 possibilities)



the CVK marker-holder cannot be mounted with this drilling

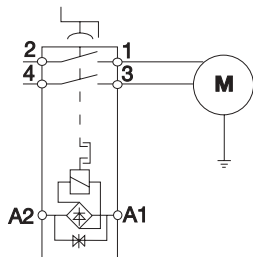
Choice of screws corresponding to the panel thickness

	PANEL THICKNESS					
	1	2	3	4	5	6
WITHOUT NAMEPLATE	9.5 2 screws : .37	9.5 2 screws : .37	9.5 4 screws : .37	2 screws or 9.5 4 screws : .37	2 screws or 9.5 4 screws : .37	2 screws or 9.5 4 screws : .37
WITH NAMEPLATE P 48	9.5 4 screws : .37	2 screws or 9.5 4 screws : .37	2 screws or 9.5 4 screws : .37	2 screws or 9.5 4 screws : .37	12.7 4 screws : .50	12.7 4 screws : .50

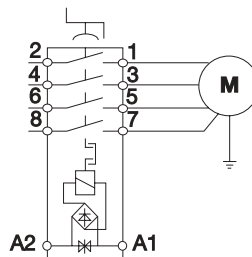
NOTE : The standard unit is delivered with 9.5 mm .37 screws (12.7 .50 screws on request).

DIAGRAMS

single-phase diagrams VY 20 / D / 012 RAMT /



three-phase diagrams VY 20 / D 014 RAMT /



- UTILIZATION safety switch

Protects the industrial machine operator against unexpected re-starting following a network voltage break.

- OPERATION interruptor

with 2 contacts (single-phase)
or with 4 contacts (three-phase).
This switch automatically returns to the position "O".
It is not possible to maintain the handle in position "1" (on) as long as the voltage is not present.

- FEATURES

- **mechanical :**
Life 10⁶ operations.
IP 65 front face protection.
- 6 protection against dust penetration
- 5 protection against water jets.
NEMA 4

- electrical :

This unit is based on a cam switch-rating 20 A (VY 20).
IEC 408 standard :

AC 21 - 16 A - 380 V	single-phase	3 kW - 220 V
		4 kW - 380 V
AC 3	three-phase	4 kW - 220 V
		7.5 kW - 380 V

UL 508 standard :

single-phase	1 HP - 120 V
	2 HP - 240 V
three-phase	5 HP - 240 V
	10 HP - 480 V

Supply voltage of the reset coil : 220 V or 380 V - 50 Hz
other voltages on request (e.g. 110 V - 60 Hz)

Voltage to be specified when ordering.

Insulation voltages :

- VDE group C 750 V~ AC - 900 V= DC
- UTE category C 500 V~ AC and = DC
- CSA 600 V
- UL 600 V

connection :

by M 3.5 screw with self-lifting shakeproof clamp.
1 conductor of 0.75 mm² min. or n°18 AWG min.
2 conductors of 4 mm² max. or n°12 AWG max.
In order to use the switch correctly, the reset coil (terminals A1, A2) must be connected between 2 phases or between phase and neutral or to any other signal permitting to detect a supply voltage failure.

For ordering :

single-phase unit

Description	P/N
110 V VY 20/D/012/RAMT-110/ST	0511 499.15
230 V VY 20/D/012/RAMT-230/ST	0504 492.10

three-phase unit

Description	P/N
110 V VY 20/D/014/RAMT-110/ST	0511 500.22
230 V VY 20/D/014/RAMT-230/ST	0504 493.11
400 V VY 20/D/014/RAMT-400/ST	0504 494.12