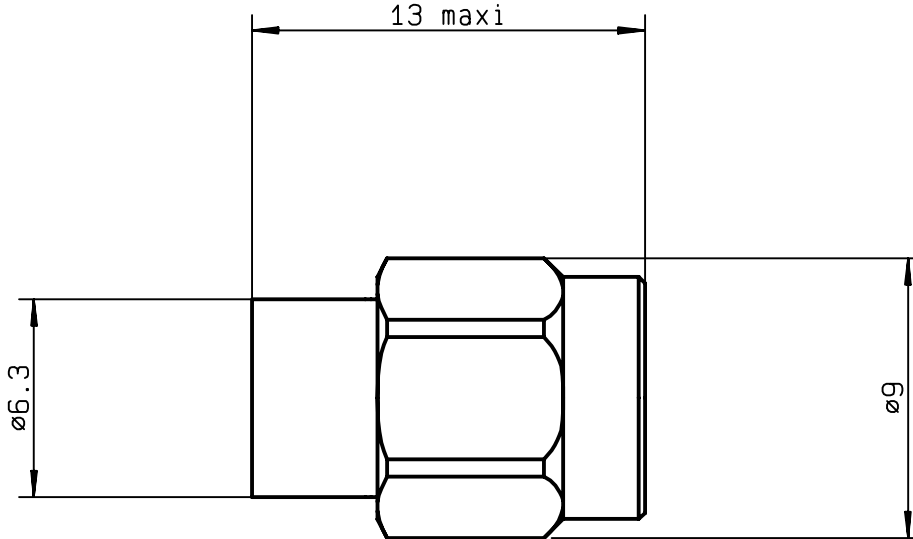




DRAWING



General tolerances: +/- 0.5 mm

MATERIALS AND FINISHES

BODY : STAINLESS STEEL  
 CONTACT : BERYLLIUM COPPER - Ni1 Au2.5  
 INSULATOR : TEFLON  
 GASKET : SILICONE RUBBER  
 RESISTOR : ALUMINA SUBSTRATE / NICHROME RESISTIVE MATERIAL

This information is given as an indication. In the continual goal to improve our products, we reserve the right to make any modifications judged necessary

CREATION N° : PEN/EP:CAT Name:KL Date:28. jun.92 APP.:				
	17. jan.03	Added MATERIALS and FINISHES	TJL	VP
	05.may.95	Peak power: 250W --> 100W	PG	VE
	16.oct.92	New format	PG	
	ISSUE	REVISIONS	NAME	APPR.

**RADIALL®**  
 101. rue P. Hoffmann -Z.I Quest-  
 93116 ROSNY/BOIS Cedex-FRANCE  
 Phone:33(1)49353535  
 Fax :33(1)48546363  
 Twx RADIA 235220F



**TITLE: 2 W 18GHZ SMA/m COAXIAL TERMINATION**

issue  
17. jan. 03

Page  
2 / 2

ELECTRICAL CHARACTERISTICS

FREQUENCY RANGE : DC - 18GHz  
 IMPEDANCE : 50 Ohms  
 DC RESISTANCE : 50 Ohms ± 5%  
 AVERAGE POWER HANDLING : 2 W at 25°C  
 PEAK POWER HANDLING : 100 W ( 1 μs, 1%. ) at 25°C

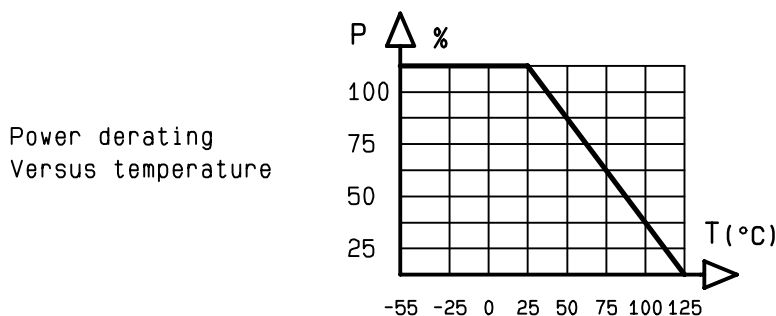
V.S.W.R : DC - 4 GHz : ≤1.10  
 4 - 8 GHz : ≤1.18  
 8 - 18 GHz : ≤1.25

MECHANICAL CHARACTERISTICS

CONNECTOR : SMA male per MIL C 39012  
 MAXIMUM WEIGHT : 3 grams

ENVIRONMENTAL CHARACTERISTICS

OPERATING TEMPERATURE RANGE (°C) : - 55 ; + 125  
 STORAGE TEMPERATURE RANGE (°C) : - 55 ; + 125



This information is given as an indication. In the continual goal to improve our products, we reserve the right to make any modifications judged necessary

4112-9212

CREATION				
N° :				
PEN/EP: CAT	17. jan. 03	Added MATERIALS and FINISHES	TJL	VP
Name: KL	05. may. 95	Peak power: 250W --> 100W	PG	VE
Date: 28. jun. 92	16. oct. 92	New format	PG	
APP. :	<b>ISSUE</b>	<b>REVISIONS</b>	<b>NAME</b>	<b>APPR.</b>

**RADIAL<sup>®</sup>**  
 101. rue P. Hoffmann -Z.I Ouest-  
 93116 ROSNY/BOIS Cedex-FRANCE  
 Phone: 33(1)49353535  
 Fax : 33(1)48546363  
 Twx RADIA 235220F