

“SNAP-IN” FITTING FOR FLEXIBLE AND COPPER TUBING



OMEGA® CONNECTORS FOR USE IN...

- ✓ Food Service
- ✓ Research and Industrial Laboratories
- ✓ Fluid Applications
- ✓ Compressed Air
- ✓ Plastic and Copper Tubing Applications

OMEGA fittings and color coded caps are manufactured using food grade Acetal Copolymers and stainless steel—Our O-rings are produced from food grade Nitrile rubber. OMEGA fittings meet stringent ISO 9001 requirements and exceed all specifications implemented by the FDA, NSF and Water Quality Association. Together, and in combination with patented,

proprietary design, your customer's health and safety are never compromised.

Application Adaptability

Our fittings are modular in design, they can be coupled together to form new integral fittings, making any complex connection requirement fast and simple.

Easy, Quick Installation

Contrasting the time consuming procedure of sweating traditional copper connections, the installation of OMEGA fittings is a click and a snap. There is no need to drain systems, remake leaky solder joints, or adjust awkward compression fittings—an especially important feature when working in confined spaces. Typical installation times can be cut by as much as 40%.

Despite this drastic cut in installation time, tests show that OMEGA fittings have a substantial service life of 20 years, while withstanding temperatures and pressures well in excess of normal working situations.

WITH EVERY OMEGA FITTING, YOU CAN EXPECT —

- ✓ 100% Leakproof Installations, Every Time
- ✓ Efficient, Rapid Connections, Even in Tight Working Quarters
- ✓ Reductions in Maintenance Cost
- ✓ Suitable for Plastic and Copper Tubing Applications (For Stainless Steel Applications Consult Factory)
- ✓ Rapid Disconnect and Reusability



OMEGA—We've Got Just the Fitting For You

Fitting Working Specifications:

Temperature

Air: -25 to 75°C (-14 to 167°F)

Water: 1 to 60°C (33 to 140°F)

Pressure

Air: 0 to 150 lbs. psi

Liquid: 0 to 150 lbs. psi

Suitable for Vacuum

Depending on the tube used, fittings may be used at higher pressures and temperatures under certain conditions. Please refer to our Technical Sales Staff for guidance.

Material Specifications

Bodies: Food Grade, Acetal Copolymer

O-Rings: Food Grade, Nitrile Rubber

Collet: Food Grade, Acetal Copolymer, Stainless Steel Teeth

THREAD TYPES: NPTF, MFL, FFL, UNS, BSW, BSP TAPER, BSP PARALLEL

Fitting Tube Tolerances

(Tube Outside Diameter)

Size (inch)	Tolerance
5/32	+01/-03
3/16	+01/-03
1/4	+01/-04
5/16	+01/-04
3/8	+01/-04
1/2	+01/-04

Fitting Tube Types

Plastic Tube: Polyethylene, nylon, polyurethane (for soft tubing or thin wall tube, tube supports are recommended).

Braided Tube: For Braided Tube, use Tube to Hose Stems and Elbows Series FT-25 & Series FT-29.

To retain braided tube on barbs, the use of clamps is also recommended.

Metal Tube (soft): Brass, Copper and Mild Steel.

Metal Tube (hard): Fittings recommended for stainless steel and other hard metal tubes, consult factory.

Chemicals: For use with chemicals or other potentially aggressive liquids, please consult our Technical Sales Staff for guidance.



Union Tee

Model No.	Tube OD (inch)
FT-020400-S1	5/32
FT-020600-S	3/16
FT-020800-S	1/4
FT-020800-S1	5/16
FT-021200-S	3/8
FT-021600-S	1/2



Reducing Elbow

Model No.	Tube OD (inch)	
	OD 1	OD 2
FT-210804-S1	5/16	5/32
FT-211006-S	5/16	3/16
FT-211008-S	5/16	1/4
FT-211206-S	3/8	3/16
FT-211208-S	3/8	1/4
FT-211210-S	3/8	5/16
FT-211612-S	1/2	3/8



Threaded Adaptor

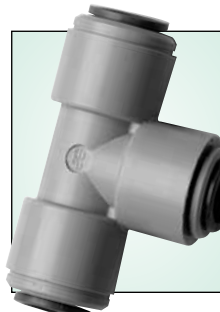
Model No.	OD (inch)	NPT
FT-010421-S1	5/32	1/8
FT-010422-S1	5/32	1/4
FT-010621-S	3/16	1/8
FT-010821-S	1/4	1/8
FT-010821-S1	5/16	1/8
FT-010822-S	1/4	1/4
FT-010822-S1	5/16	1/4
FT-010823-S	1/4	3/8
FT-010823-S1	5/16	3/8
FT-011221-S	3/8	1/8
FT-011222-S	3/8	1/4
FT-011223-S	3/8	3/8
FT-011224-S	3/8	1/2
FT-011623-S	1/2	3/8
FT-011624-S	1/2	1/2

Ordering Example: FT-010821-S, 1/4" tubing to 1/8" NPT adaptor.



Union Elbow

Model No.	Tube OD (inch)
FT-030400-S1	5/32
FT-030600-S	3/16
FT-030800-S	1/4
FT-030800-S1	5/16
FT-031200-S	3/8
FT-031600	1/2



Reducing Branch Tee

Model No.	Tube OD Ends	Tube OD Branch
FT-301612-S	1/2"	3/8"



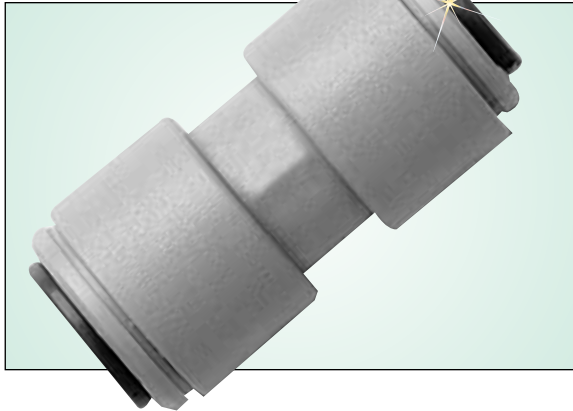
By P/N

Fixed Elbow



Model No.	Tube OD (inch)	Thread NPTF
FT-480821-S	1/4	1/8
FT-480822-S	1/4	1/4
FT-480823-S	1/4	3/8
FT-481222-S	3/8	1/4

Reducing Union



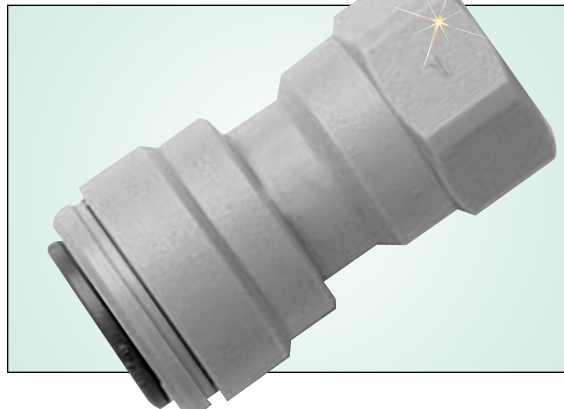
Model No.	Tube OD (inch)	
	OD 1	OD 2
FT-200806-S	1/4	3/16
FT-200804-S1	5/16	5/32
FT-201006-S	5/16	3/16
FT-201008-S	5/16	1/4
FT-201206-S	3/8	3/16
FT-201208-S	3/8	1/4
FT-201210-S	3/8	5/16
FT-201610-S	1/2	5/16
FT-201612-S	1/2	3/8

Union Connector



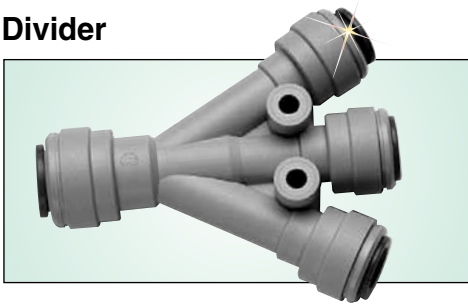
Model No.	Tube OD (inch)
FT-0404-S1	5/32
FT-0406-S	3/16
FT-0408-S	1/4
FT-0408-S1	5/16
FT-0412-S	3/8
FT-0416-S	1/2

Female Connector



Model No.	Tube OD (inch)	Thread NPTF
FT-450822-S	1/4	1/4
FT-451222-S	3/8	1/4

3-Way Divider



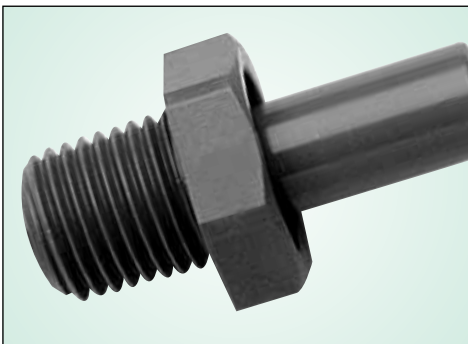
Model No.	Tube OD (inch)	
	Inlet OD	Outlet OD
FT-491612-S	1/2	3/8

Cross

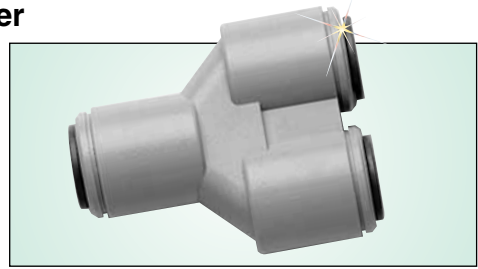


Model No.	Tube Od
FT-471200-S	3/8"

Stem Adaptor



2-Way Divider



Model No.	Tube OD (inch)
FT-230800-S1	5/16
FT-231200-S	3/8

Unequal 2-Way Divider

Model No.	Tube OD (inch)	
	Inlet OD	Outlet OD
FT-241210-S	3/8	5/16

Locking Clip

Model No.	Tube OD (inch)
FT-C1808-R	1/4
FT-C1812-R	3/8

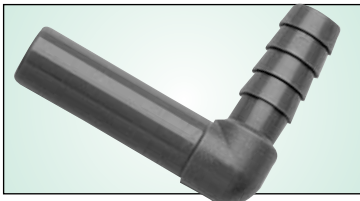


Model No.	Stem OD (inch)	Thread NPTF
FT-050421-S1	5/32	1/8
FT-050422-S1	5/32	1/4
FT-050621-S	3/16	1/8
FT-050821-S	1/4	1/8
FT-050821-S1	5/16	1/8
FT-050822-S	1/4	1/4
FT-050822-S1	5/16	1/4
FT-050823-S1	5/16	3/8
FT-051222-S	3/8	1/4
FT-051223-S	3/8	3/8
FT-051623-S	1/2	3/8
FT-051624-S	1/2	1/2



Check Valve

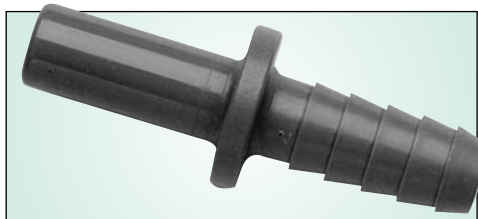
Model No.	Tube Od
FT-138120-S	3/8"



Tube to Hose Elbow

Model No.	Stem OD (inch)	Hose ID (inch)
FT-290808-S	1/4	1/4
FT-290808-S1	5/16	5/16
FT-290810-S	1/4	5/16
FT-291008-S	5/16	1/4
FT-291208-S	3/8	1/4
FT-291210-S	3/8	5/16

Tube to Hose Stem



Model No.	Stem OD (inch)	Hose ID (inch)
FT-250806-S	1/4	3/16
FT-250808-S	1/4	1/4
FT-250808-S1	5/16	5/16
FT-250810-S	1/4	5/16
FT-251006-S	5/16	3/16
FT-251008-S	5/16	1/4
FT-251012-S	5/16	3/8
FT-251208-S	3/8	1/4
FT-251210-S	3/8	5/16
FT-251212-S	3/8	3/8
FT-251216-S	3/8	1/2
FT-251612-S	1/2	3/8
FT-251616-S	1/2	1/2

Ordering Example: FT-250806-S, 3/16" tube ID to 1/4" stem OD.

T-X